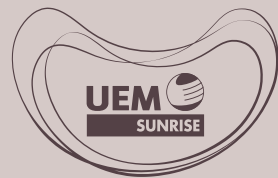
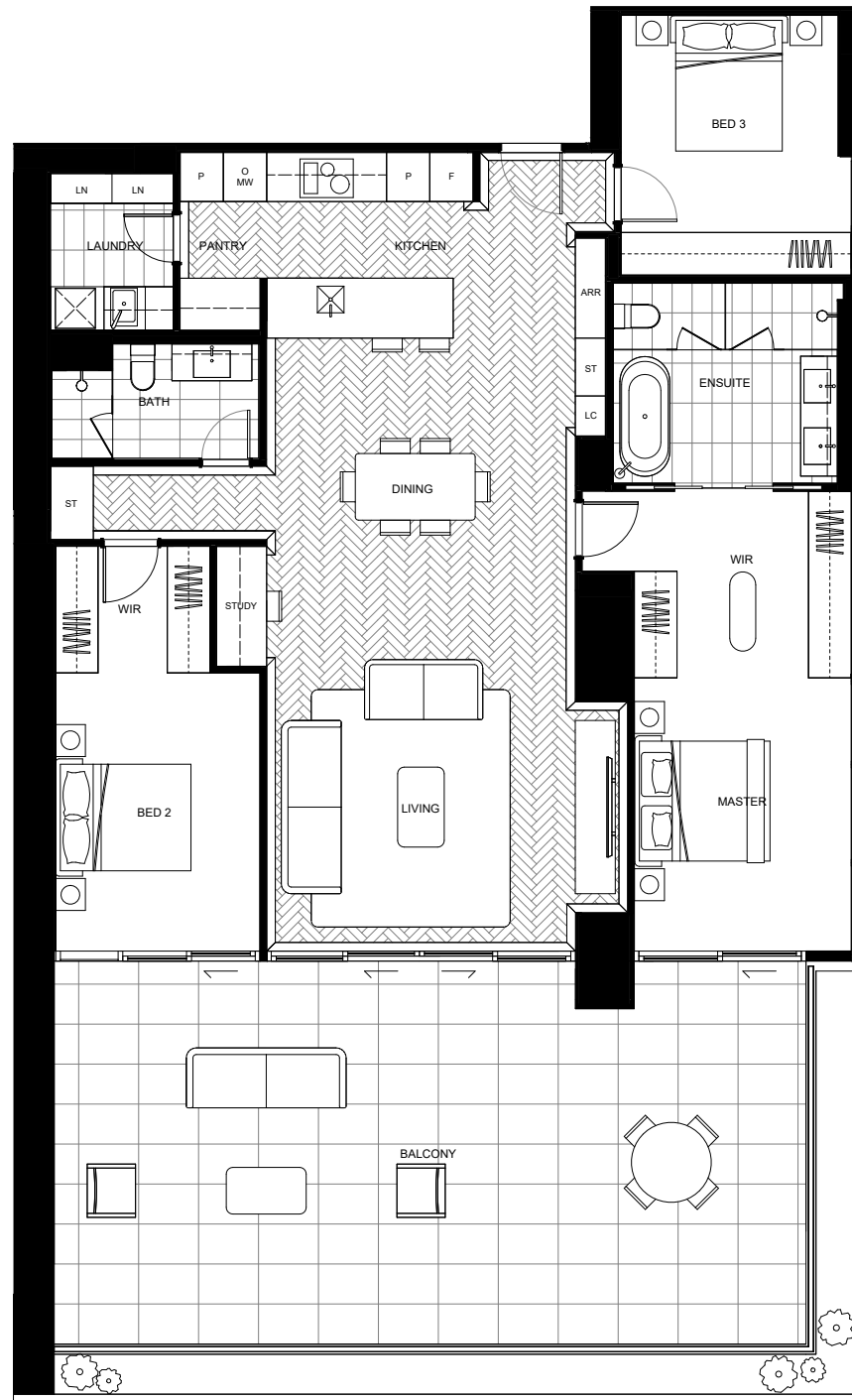


ONE OVAL

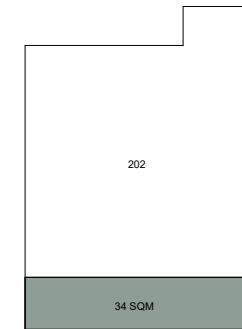
SUBI EAST



GARDEN HOMES
TYPE G-C1



ALTERNATIVE BALCONY



LEVEL 2

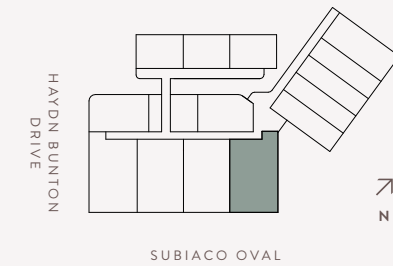


APARTMENT

Number	102, 202
Level	1 & 2

AREA

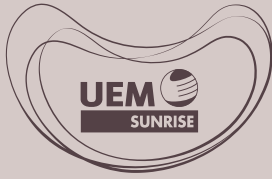
Internal	163m ²
Balcony	82m ²
Store	5m ²
Car Bay	26m ²
Total	276m ²



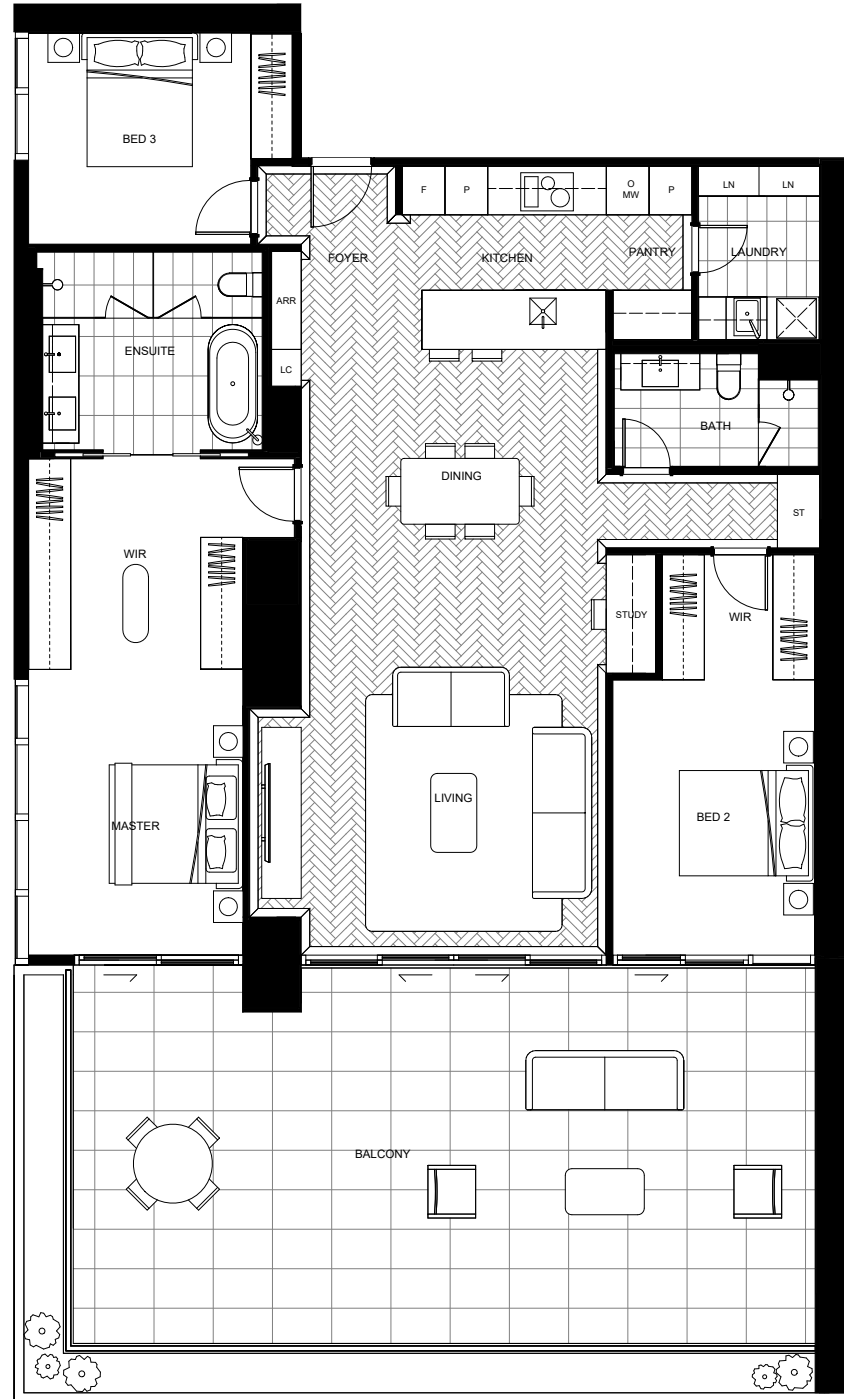
DISCLAIMER: The layout plans have been prepared prior to formal approvals and construction and are intended for marketing purposes only. There is no guarantee the plans are accurate and they may be subject to change. During construction, modifications may occur to dimensions, areas, fittings, finishes, and specifications, in accordance with the terms of the contract for sale. Furniture and furnishings shown are for illustrative purposes only and are not included in the sale. Purchasers should refer to their contract for sale for a complete list of finishes and inclusions. The placement of furniture and furnishings does not reflect the final positioning of power outlets, TV connection points, or similar services. All graphics, including tile layouts, balustrades, and other design elements, are indicative only, and bulkheads for services may not be depicted. Prospective purchasers must rely on their own enquiries and the terms outlined in the contract of sale.

ONE OVAL

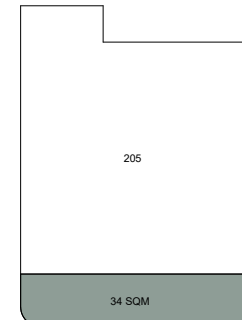
SUBI EAST



GARDEN HOMES
TYPE G-C2



ALTERNATIVE BALCONY



LEVEL 2

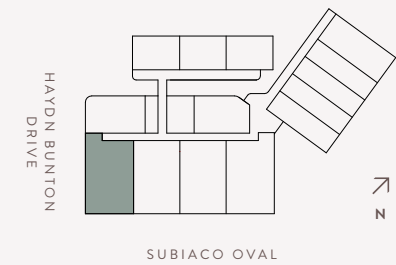
3	2	1	2

APARTMENT

Number	105, 205
Level	1 & 2

AREA

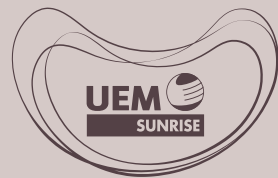
Internal	163m ²
Balcony	82m ²
Store	5m ²
Car Bay	26m ²
Total	276m ²



DISCLAIMER: The layout plans have been prepared prior to formal approvals and construction and are intended for marketing purposes only. There is no guarantee the plans are accurate and they may be subject to change. During construction, modifications may occur to dimensions, areas, fittings, finishes, and specifications, in accordance with the terms of the contract for sale. Furniture and furnishings shown are for illustrative purposes only and are not included in the sale. Purchasers should refer to their contract for sale for a complete list of finishes and inclusions. The placement of furniture and furnishings does not reflect the final positioning of power outlets, TV connection points, or similar services. All graphics, including tile layouts, balustrades, and other design elements, are indicative only, and bulkheads for services may not be depicted. Prospective purchasers must rely on their own enquiries and the terms outlined in the contract of sale.

ONE OVAL

SUBI EAST



GARDEN HOMES
TYPE G-C3



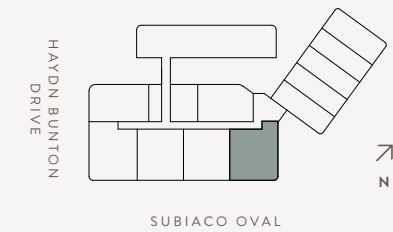
3	2	1	2

APARTMENT

Number	302
Level	3

AREA

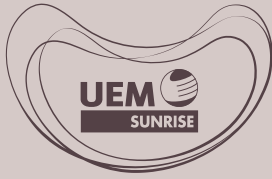
Internal	142m ²
Balcony	32m ²
Store	5m ²
Car Bay	24m ²
Total	203m ²



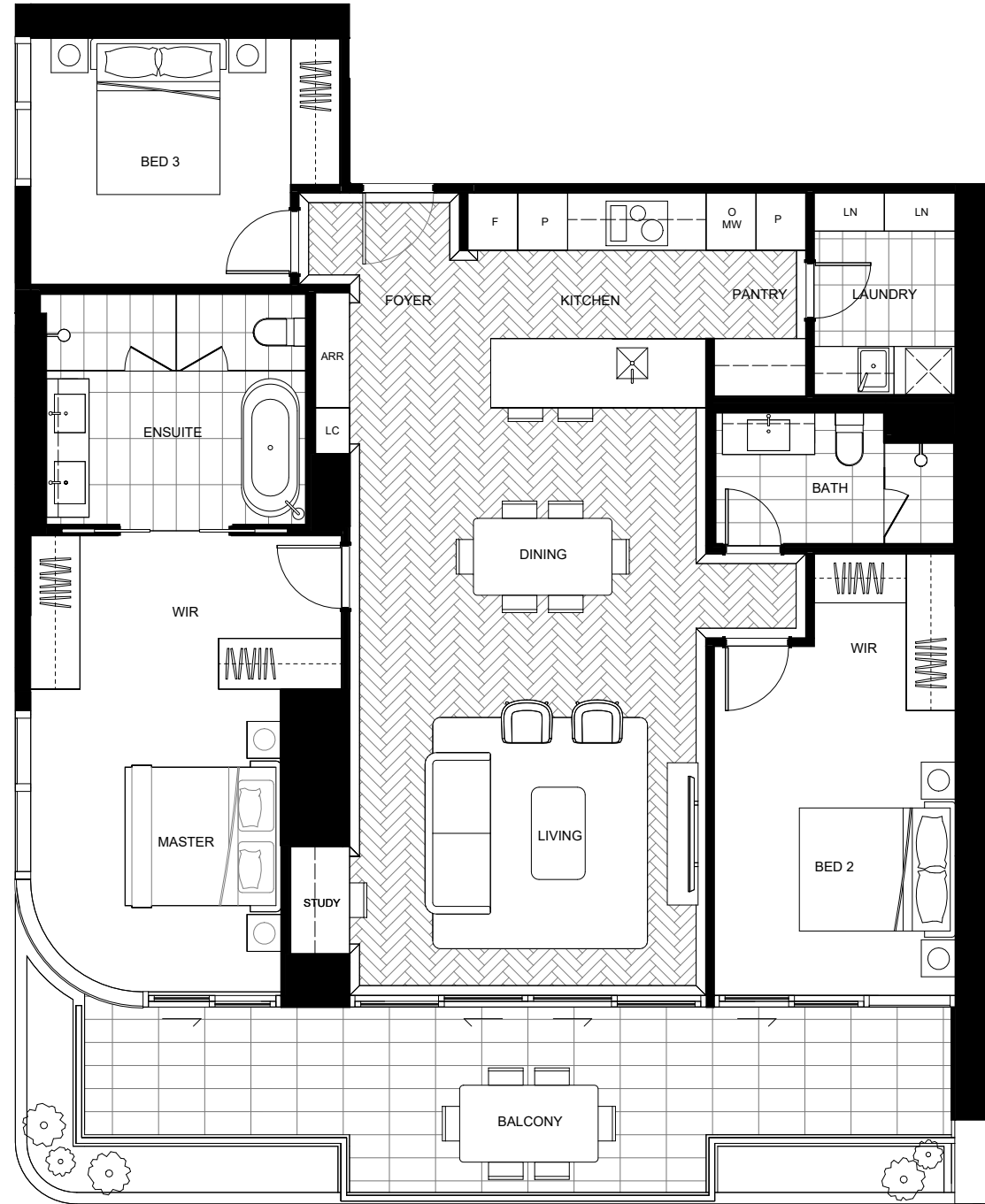
DISCLAIMER: The layout plans have been prepared prior to formal approvals and construction and are intended for marketing purposes only. There is no guarantee the plans are accurate and they may be subject to change. During construction, modifications may occur to dimensions, areas, fittings, finishes, and specifications, in accordance with the terms of the contract for sale. Furniture and furnishings shown are for illustrative purposes only and are not included in the sale. Purchasers should refer to their contract for sale for a complete list of finishes and inclusions. The placement of furniture and furnishings does not reflect the final positioning of power outlets, TV connection points, or similar services. All graphics, including tile layouts, balustrades, and other design elements, are indicative only, and bulkheads for services may not be depicted. Prospective purchasers must rely on their own enquiries and the terms outlined in the contract of sale.

ONE OVAL

SUBI EAST



GARDEN HOMES
TYPE G-C4



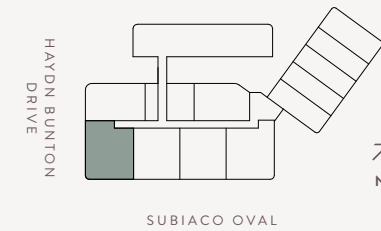
3	2	1	2

APARTMENT

Number	305
Level	3

AREA

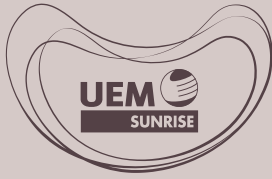
Internal	142m ²
Balcony	32m ²
Store	5m ²
Car Bay	24m ²
Total	203m ²



DISCLAIMER: The layout plans have been prepared prior to formal approvals and construction and are intended for marketing purposes only. There is no guarantee the plans are accurate and they may be subject to change. During construction, modifications may occur to dimensions, areas, fittings, finishes, and specifications, in accordance with the terms of the contract for sale. Furniture and furnishings shown are for illustrative purposes only and are not included in the sale. Purchasers should refer to their contract for sale for a complete list of finishes and inclusions. The placement of furniture and furnishings does not reflect the final positioning of power outlets, TV connection points, or similar services. All graphics, including tile layouts, balustrades, and other design elements, are indicative only, and bulkheads for services may not be depicted. Prospective purchasers must rely on their own enquiries and the terms outlined in the contract of sale.

ONE OVAL

SUBI EAST



GARDEN HOMES
TYPE G-C5

			
3	2	1	2

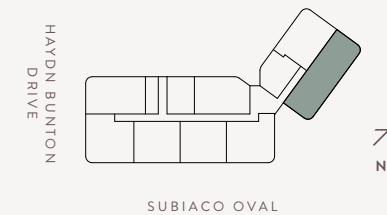
APARTMENT

Number 504, 604, 704, 804, 904, 1004,
1104, 1204, 1304

Level 5 to 13

AREA

Internal	160m ²
Balcony	33m ²
Store	5m ²
Car Bay	26m ²
Total	224m ²

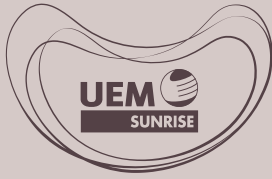


* Fixed full height glazing panel

DISCLAIMER: The layout plans have been prepared prior to formal approvals and construction and are intended for marketing purposes only. There is no guarantee the plans are accurate and they may be subject to change. During construction, modifications may occur to dimensions, areas, fittings, finishes, and specifications, in accordance with the terms of the contract for sale. Furniture and furnishings shown are for illustrative purposes only and are not included in the sale. Purchasers should refer to their contract for sale for a complete list of finishes and inclusions. The placement of furniture and furnishings does not reflect the final positioning of power outlets, TV connection points, or similar services. All graphics, including tile layouts, balustrades, and other design elements, are indicative only, and bulkheads for services may not be depicted. Prospective purchasers must rely on their own enquiries and the terms outlined in the contract of sale.

ONE OVAL

SUBI EAST



HORIZON HOMES TYPE H-C5

			
3	2	1	2

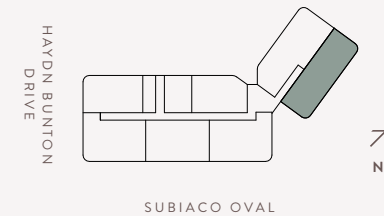
APARTMENT

Number 1403, 1503, 1603, 1703, 1803, 1903, 2003, 2103, 2203, 2303, 2403, 2503

Level 14 to 25

AREA

Internal	160m ²
Balcony	33m ²
Store	5m ²
Car Bay	26m ²
Total	224m ²

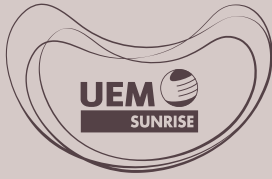


* Fixed full height glazing panel

DISCLAIMER: The layout plans have been prepared prior to formal approvals and construction and are intended for marketing purposes only. There is no guarantee the plans are accurate and they may be subject to change. During construction, modifications may occur to dimensions, areas, fittings, finishes, and specifications, in accordance with the terms of the contract for sale. Furniture and furnishings shown are for illustrative purposes only and are not included in the sale. Purchasers should refer to their contract for sale for a complete list of finishes and inclusions. The placement of furniture and furnishings does not reflect the final positioning of power outlets, TV connection points, or similar services. All graphics, including tile layouts, balustrades, and other design elements, are indicative only, and bulkheads for services may not be depicted. Prospective purchasers must rely on their own enquiries and the terms outlined in the contract of sale.

ONE OVAL

SUBI EAST



HORIZON HOMES
TYPE H-C6



* Fixed full height glazing panel

3	3	1	2

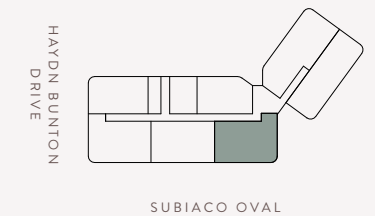
APARTMENT

Number 1404, 1504, 1604, 1704, 1804, 1904,
2004, 2104, 2204, 2304, 2404, 2504

Level 14 to 25

AREA

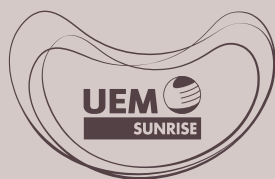
Internal	159m ²
Balcony	23m ²
Store	5m ²
Car Bay	26m ²
Total	213m ²



DISCLAIMER: The layout plans have been prepared prior to formal approvals and construction and are intended for marketing purposes only. There is no guarantee the plans are accurate and they may be subject to change. During construction, modifications may occur to dimensions, areas, fittings, finishes, and specifications, in accordance with the terms of the contract for sale. Furniture and furnishings shown are for illustrative purposes only and are not included in the sale. Purchasers should refer to their contract for sale for a complete list of finishes and inclusions. The placement of furniture and furnishings does not reflect the final positioning of power outlets, TV connection points, or similar services. All graphics, including tile layouts, balustrades, and other design elements, are indicative only, and bulkheads for services may not be depicted. Prospective purchasers must rely on their own enquiries and the terms outlined in the contract of sale.

ONE OVAL

SUBI EAST



HORIZON HOMES
TYPE H-C7



3	2	1	2

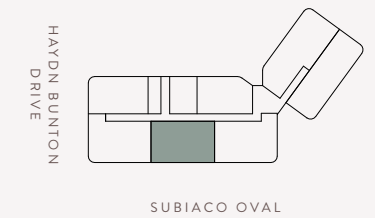
APARTMENT

Number 1405, 1505, 1605, 1705, 1805, 1905,
2005, 2105, 2205, 2305, 2405, 2505

Level 14 to 25

AREA

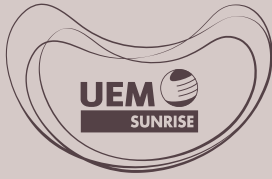
Internal	153m ²
Balcony	22m ²
Store	5m ²
Car Bay	26m ²
Total	206m ²



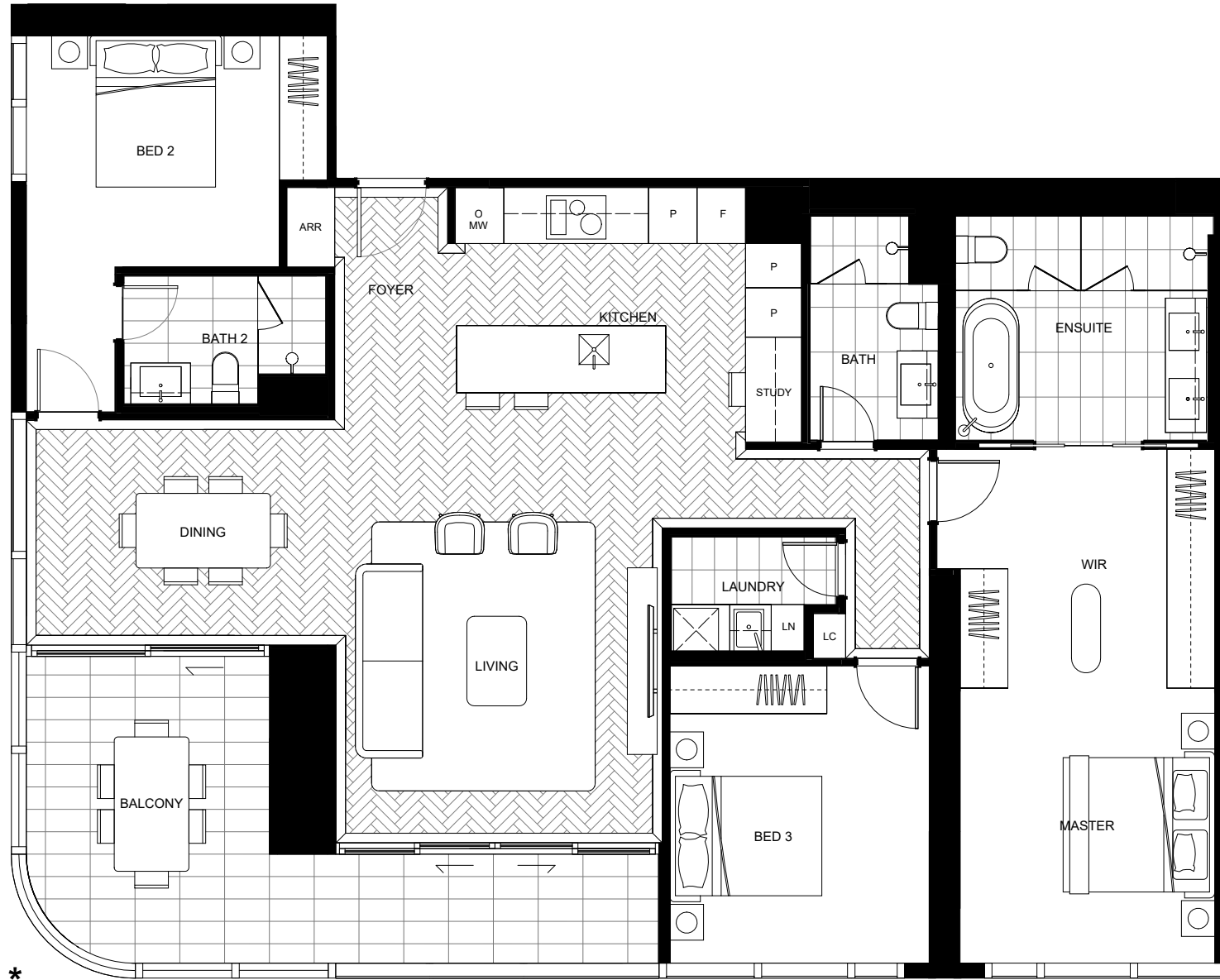
DISCLAIMER: The layout plans have been prepared prior to formal approvals and construction and are intended for marketing purposes only. There is no guarantee the plans are accurate and they may be subject to change. During construction, modifications may occur to dimensions, areas, fittings, finishes, and specifications, in accordance with the terms of the contract for sale. Furniture and furnishings shown are for illustrative purposes only and are not included in the sale. Purchasers should refer to their contract for sale for a complete list of finishes and inclusions. The placement of furniture and furnishings does not reflect the final positioning of power outlets, TV connection points, or similar services. All graphics, including tile layouts, balustrades, and other design elements, are indicative only, and bulkheads for services may not be depicted. Prospective purchasers must rely on their own enquiries and the terms outlined in the contract of sale.

ONE OVAL

SUBI EAST



HORIZON HOMES
TYPE H-C8



* Fixed full height glazing panel

3	3	1	2

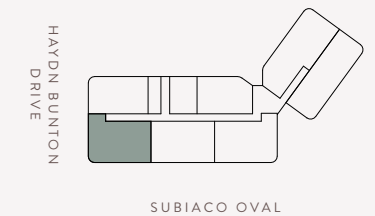
APARTMENT

Number 1406, 1506, 1606, 1706, 1806, 1906,
2006, 2106, 2206, 2306, 2406, 2506

Level 14 to 25

AREA

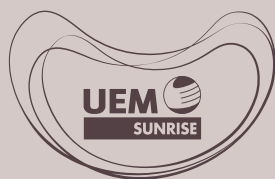
Internal	158m ²
Balcony	23m ²
Store	5m ²
Car Bay	26m ²
Total	212m ²



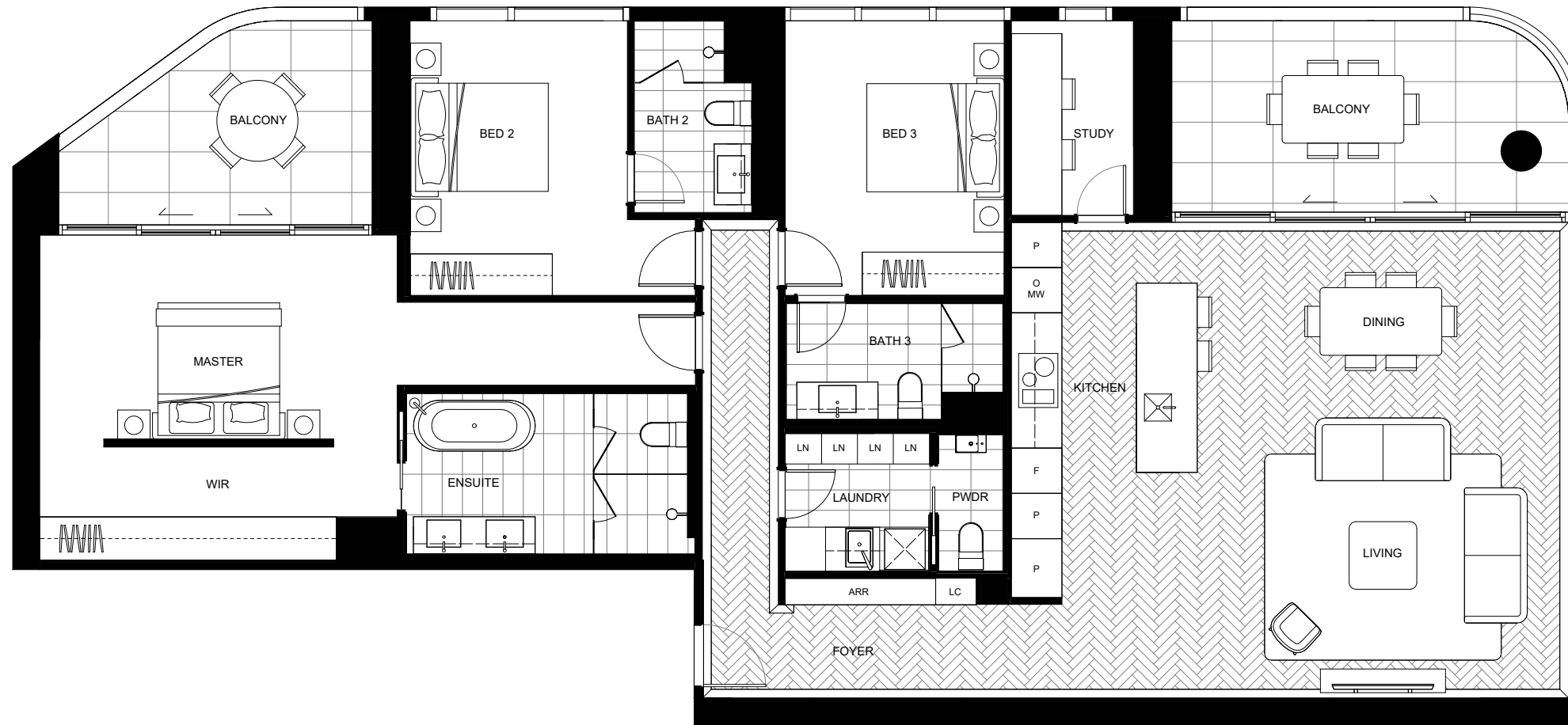
DISCLAIMER: The layout plans have been prepared prior to formal approvals and construction and are intended for marketing purposes only. There is no guarantee the plans are accurate and they may be subject to change. During construction, modifications may occur to dimensions, areas, fittings, finishes, and specifications, in accordance with the terms of the contract for sale. Furniture and furnishings shown are for illustrative purposes only and are not included in the sale. Purchasers should refer to their contract for sale for a complete list of finishes and inclusions. The placement of furniture and furnishings does not reflect the final positioning of power outlets, TV connection points, or similar services. All graphics, including tile layouts, balustrades, and other design elements, are indicative only, and bulkheads for services may not be depicted. Prospective purchasers must rely on their own enquiries and the terms outlined in the contract of sale.

ONE OVAL

SUBI EAST



HORIZON HOMES
TYPE H-C9



* Fixed full height glazing panel

3	3.5	1	2

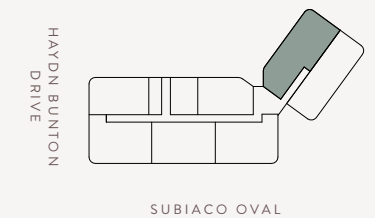
APARTMENT

Number 1402, 1502, 1602, 1702, 1802 1902, 2002, 2102, 2202, 2302, 2402, 2502

Level 14 to 25

AREA

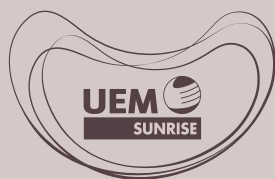
Internal	185m ²
Balcony	30m ²
Store	5m ²
Car Bay	26m ²
Total	247m ²



DISCLAIMER: The layout plans have been prepared prior to formal approvals and construction and are intended for marketing purposes only. There is no guarantee the plans are accurate and they may be subject to change. During construction, modifications may occur to dimensions, areas, fittings, finishes, and specifications, in accordance with the terms of the contract for sale. Furniture and furnishings shown are for illustrative purposes only and are not included in the sale. Purchasers should refer to their contract for sale for a complete list of finishes and inclusions. The placement of furniture and furnishings does not reflect the final positioning of power outlets, TV connection points, or similar services. All graphics, including tile layouts, balustrades, and other design elements, are indicative only, and bulkheads for services may not be depicted. Prospective purchasers must rely on their own enquiries and the terms outlined in the contract of sale.

ONE OVAL

SUBI EAST



SKY HOMES
TYPE S-C6



* Fixed full height glazing panel

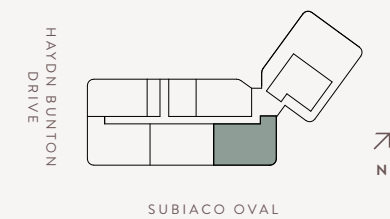
3	3	1	2

APARTMENT

Number	2602, 2702, 2802
Level	26 to 28

AREA

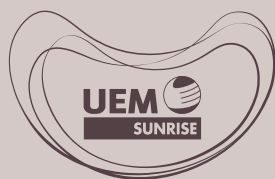
Internal	159m ²
Balcony	23m ²
Store	10m ²
Car Bay	26m ²
Total	218m ²



DISCLAIMER: The layout plans have been prepared prior to formal approvals and construction and are intended for marketing purposes only. There is no guarantee the plans are accurate and they may be subject to change. During construction, modifications may occur to dimensions, areas, fittings, finishes, and specifications, in accordance with the terms of the contract for sale. Furniture and furnishings shown are for illustrative purposes only and are not included in the sale. Purchasers should refer to their contract for sale for a complete list of finishes and inclusions. The placement of furniture and furnishings does not reflect the final positioning of power outlets, TV connection points, or similar services. All graphics, including tile layouts, balustrades, and other design elements, are indicative only, and bulkheads for services may not be depicted. Prospective purchasers must rely on their own enquiries and the terms outlined in the contract of sale.

ONE OVAL

SUBI EAST



SKY HOMES
TYPE S-C7

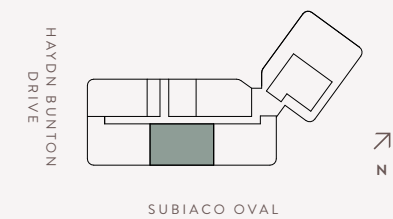


APARTMENT

Number	2603, 2703, 2803
Level	26 to 28

AREA

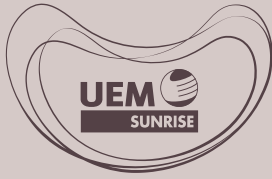
Internal	153m ²
Balcony	22m ²
Store	10m ²
Car Bay	26m ²
Total	211m ²



DISCLAIMER: The layout plans have been prepared prior to formal approvals and construction and are intended for marketing purposes only. There is no guarantee the plans are accurate and they may be subject to change. During construction, modifications may occur to dimensions, areas, fittings, finishes, and specifications, in accordance with the terms of the contract for sale. Furniture and furnishings shown are for illustrative purposes only and are not included in the sale. Purchasers should refer to their contract for sale for a complete list of finishes and inclusions. The placement of furniture and furnishings does not reflect the final positioning of power outlets, TV connection points, or similar services. All graphics, including tile layouts, balustrades, and other design elements, are indicative only, and bulkheads for services may not be depicted. Prospective purchasers must rely on their own enquiries and the terms outlined in the contract of sale.

ONE OVAL

SUBI EAST



SKY HOMES
TYPE S-C8



* Fixed full height glazing panel

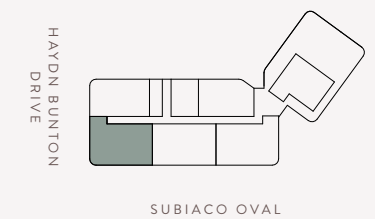
3	3	1	2

APARTMENT

Number	2604, 2704, 2804
Level	26 to 28

AREA

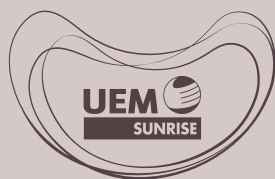
Internal	158m ²
Balcony	23m ²
Store	10m ²
Car Bay	26m ²
Total	217m ²



DISCLAIMER: The layout plans have been prepared prior to formal approvals and construction and are intended for marketing purposes only. There is no guarantee the plans are accurate and they may be subject to change. During construction, modifications may occur to dimensions, areas, fittings, finishes, and specifications, in accordance with the terms of the contract for sale. Furniture and furnishings shown are for illustrative purposes only and are not included in the sale. Purchasers should refer to their contract for sale for a complete list of finishes and inclusions. The placement of furniture and furnishings does not reflect the final positioning of power outlets, TV connection points, or similar services. All graphics, including tile layouts, balustrades, and other design elements, are indicative only, and bulkheads for services may not be depicted. Prospective purchasers must rely on their own enquiries and the terms outlined in the contract of sale.

ONE OVAL

SUBI EAST



SKY HOMES
TYPE S-C10

			
3	3.5	1	2



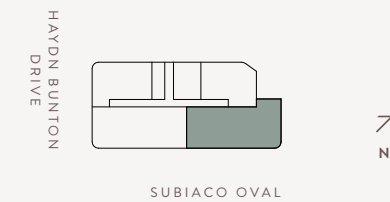
APARTMENT

Number 2902, 3002, 3102, 3202, 3302, 3402

Level 29 to 34

AREA

Internal	208m ²
Balcony	65m ²
Store	10m ²
Car Bay	26m ²
Total	309m ²

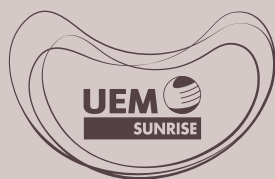


* Fixed full height glazing panel

DISCLAIMER: The layout plans have been prepared prior to formal approvals and construction and are intended for marketing purposes only. There is no guarantee the plans are accurate and they may be subject to change. During construction, modifications may occur to dimensions, areas, fittings, finishes, and specifications, in accordance with the terms of the contract for sale. Furniture and furnishings shown are for illustrative purposes only and are not included in the sale. Purchasers should refer to their contract for sale for a complete list of finishes and inclusions. The placement of furniture and furnishings does not reflect the final positioning of power outlets, TV connection points, or similar services. All graphics, including tile layouts, balustrades, and other design elements, are indicative only, and bulkheads for services may not be depicted. Prospective purchasers must rely on their own enquiries and the terms outlined in the contract of sale.

ONE OVAL

SUBI EAST



SKY HOMES
TYPE S-C11

			
3	3.5	1	2

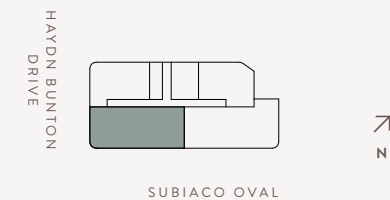
APARTMENT

Number 2903, 3003, 3103, 3203, 3303, 3403

Level 29 to 34

AREA

Internal	203m ²
Balcony	57m ²
Store	10m ²
Car Bay	26m ²
Total	296m ²



* Fixed full height glazing panel

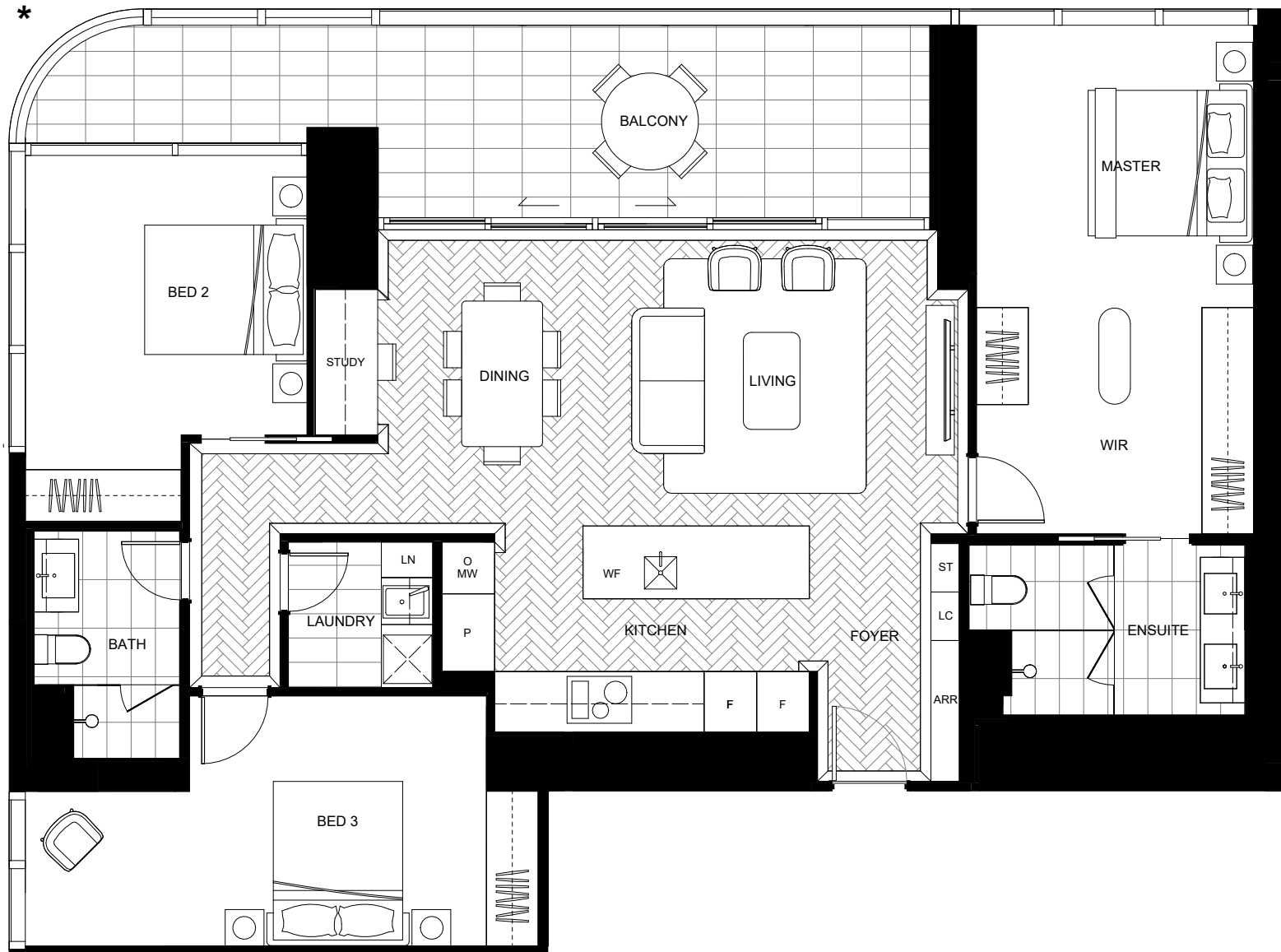
DISCLAIMER: The layout plans have been prepared prior to formal approvals and construction and are intended for marketing purposes only. There is no guarantee the plans are accurate and they may be subject to change. During construction, modifications may occur to dimensions, areas, fittings, finishes, and specifications, in accordance with the terms of the contract for sale. Furniture and furnishings shown are for illustrative purposes only and are not included in the sale. Purchasers should refer to their contract for sale for a complete list of finishes and inclusions. The placement of furniture and furnishings does not reflect the final positioning of power outlets, TV connection points, or similar services. All graphics, including tile layouts, balustrades, and other design elements, are indicative only, and bulkheads for services may not be depicted. Prospective purchasers must rely on their own enquiries and the terms outlined in the contract of sale.

ONE OVAL

SUBI EAST



SKY HOMES
TYPE S-C12



* Fixed full height glazing panel

3	2	1	2

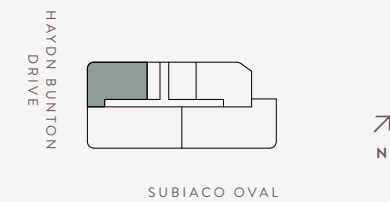
APARTMENT

Number 2904, 3004, 3104, 3204, 3304, 3404

Level 29 to 34

AREA

Internal	134m ²
Balcony	24m ²
Store	10m ²
Car Bay	26m ²
Total	194m ²



DISCLAIMER: The layout plans have been prepared prior to formal approvals and construction and are intended for marketing purposes only. There is no guarantee the plans are accurate and they may be subject to change. During construction, modifications may occur to dimensions, areas, fittings, finishes, and specifications, in accordance with the terms of the contract for sale. Furniture and furnishings shown are for illustrative purposes only and are not included in the sale. Purchasers should refer to their contract for sale for a complete list of finishes and inclusions. The placement of furniture and furnishings does not reflect the final positioning of power outlets, TV connection points, or similar services. All graphics, including tile layouts, balustrades, and other design elements, are indicative only, and bulkheads for services may not be depicted. Prospective purchasers must rely on their own enquiries and the terms outlined in the contract of sale.