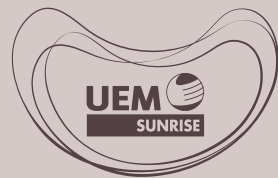
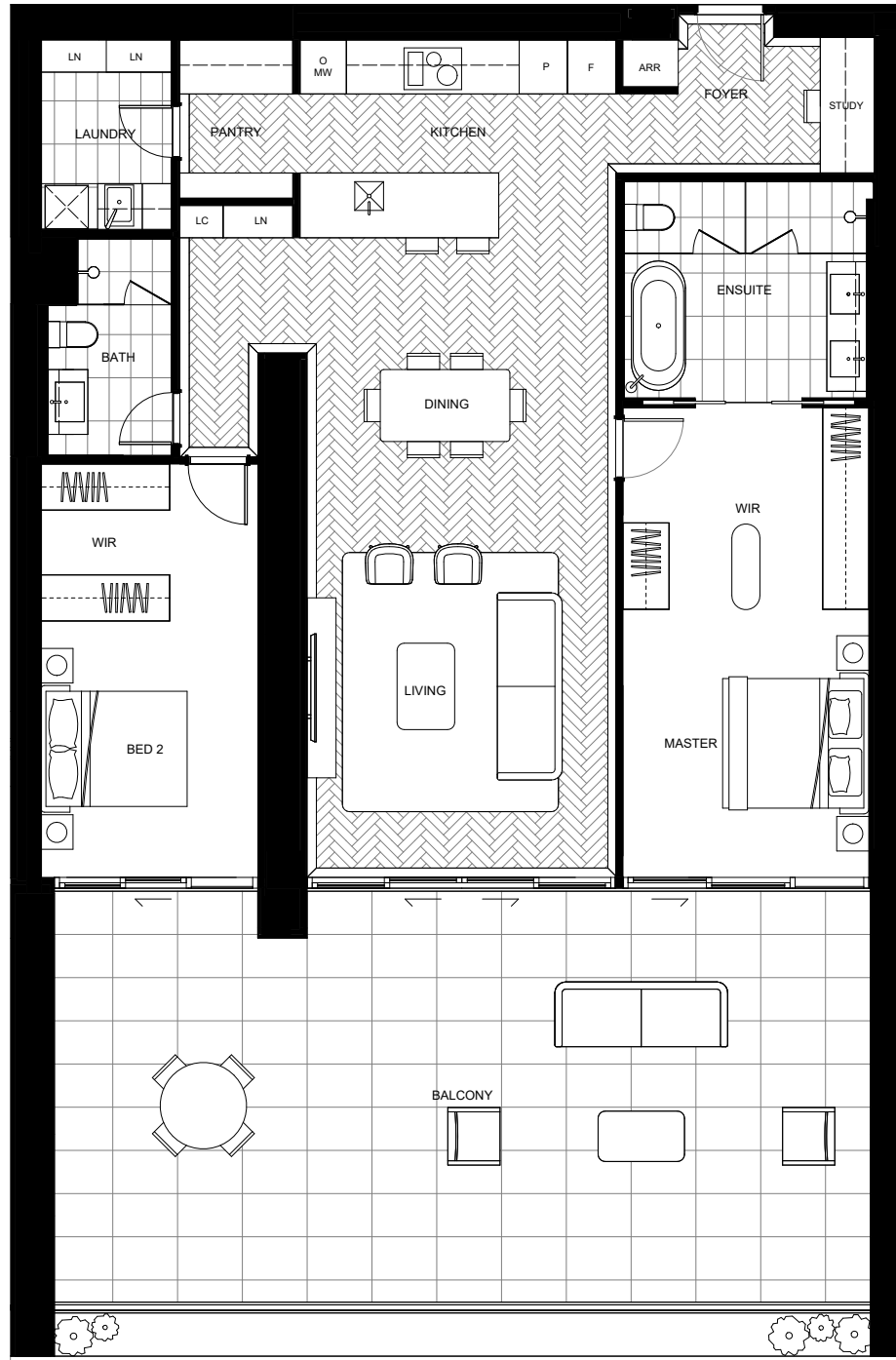


# ONE OVAL

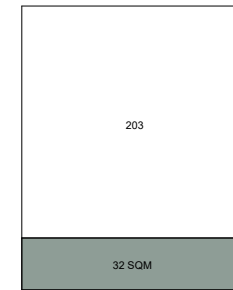
SUBI EAST



GARDEN HOMES  
TYPE G-B1



ALTERNATIVE BALCONY



LEVEL 2

2	2	1	2

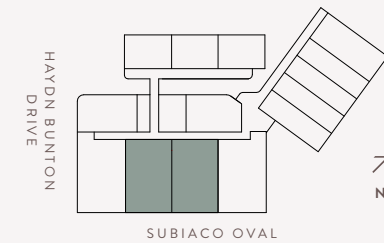
APARTMENT

Number 103, 104 (Mirror of 103), 203,  
204 (Mirror of 203)

Level 1 & 2

AREA

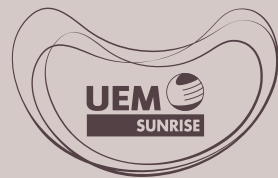
Internal	147m <sup>2</sup>
Balcony	79m <sup>2</sup>
Store	5m <sup>2</sup>
Car Bay	24m <sup>2</sup>
Total	255m <sup>2</sup>



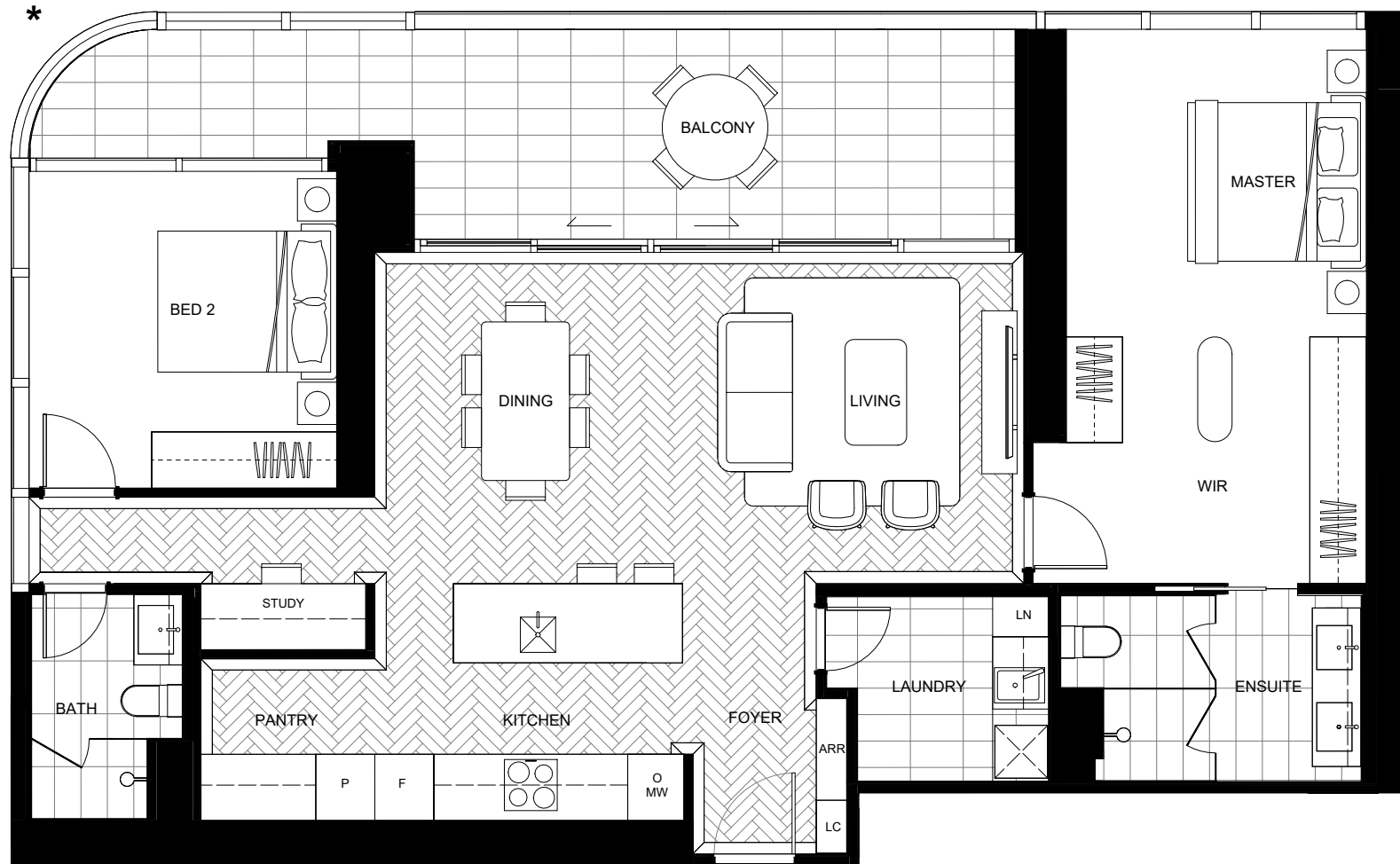
DISCLAIMER: The layout plans have been prepared prior to formal approvals and construction and are intended for marketing purposes only. There is no guarantee the plans are accurate and they may be subject to change. During construction, modifications may occur to dimensions, areas, fittings, finishes, and specifications, in accordance with the terms of the contract for sale. Furniture and furnishings shown are for illustrative purposes only and are not included in the sale. Purchasers should refer to their contract for sale for a complete list of finishes and inclusions. The placement of furniture and furnishings does not reflect the final positioning of power outlets, TV connection points, or similar services. All graphics, including tile layouts, balustrades, and other design elements, are indicative only, and bulkheads for services may not be depicted. Prospective purchasers must rely on their own enquiries and the terms outlined in the contract of sale.

# ONE OVAL

SUBI EAST



GARDEN HOMES  
TYPE G-B2



2	2	1	1

APARTMENT

Number 106, 206, 306, 405, 509, 609, 709,  
809, 909, 1009, 1109, 1209, 1309

Level 1 to 13

AREA

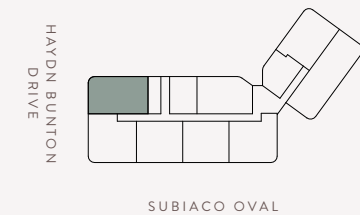
Internal 119m<sup>2</sup>

Balcony 24m<sup>2</sup>

Store 5m<sup>2</sup>

Car Bay 13m<sup>2</sup>

Total 161m<sup>2</sup>



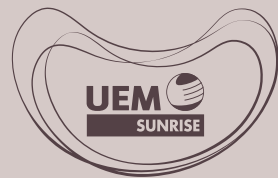
DISCLAIMER: The layout plans have been prepared prior to formal approvals and construction and are intended for marketing purposes only. There is no guarantee the plans are accurate and they may be subject to change. During construction, modifications may occur to dimensions, areas, fittings, finishes, and specifications, in accordance with the terms of the contract for sale. Furniture and furnishings shown are for illustrative purposes only and are not included in the sale. Purchasers should refer to their contract for sale for a complete list of finishes and inclusions. The placement of furniture and furnishings does not reflect the final positioning of power outlets, TV connection points, or similar services. All graphics, including tile layouts, balustrades, and other design elements, are indicative only, and bulkheads for services may not be depicted. Prospective purchasers must rely on their own enquiries and the terms outlined in the contract of sale.



\* Fixed full height glazing panel

# ONE OVAL

SUBI EAST



GARDEN HOMES  
TYPE G-B3

			
2	2	1	1

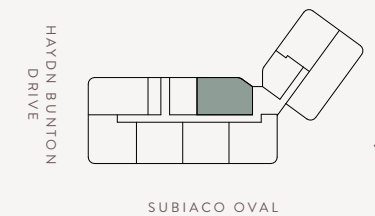
APARTMENT

Number 101, 201, 301, 501, 601, 701, 801, 901,  
1001, 1101, 1201, 1301

Level 1 to 3, 5 to 13

AREA

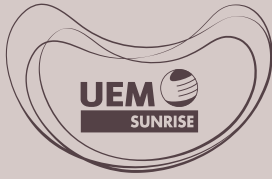
Internal	111m <sup>2</sup>
Balcony	17m <sup>2</sup>
Store	5m <sup>2</sup>
Car Bay	13m <sup>2</sup>
Total	146m <sup>2</sup>



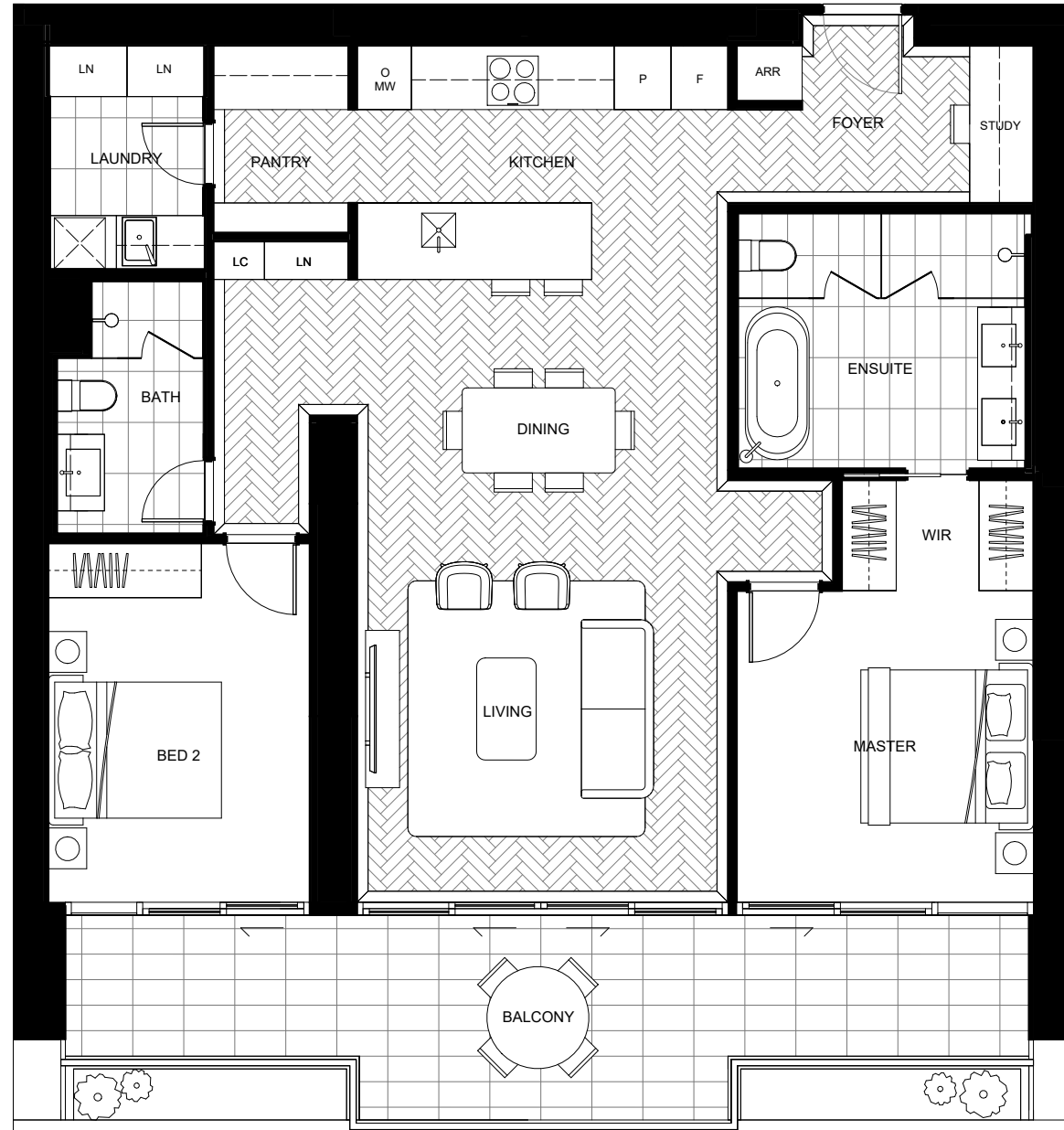
DISCLAIMER: The layout plans have been prepared prior to formal approvals and construction and are intended for marketing purposes only. There is no guarantee the plans are accurate and they may be subject to change. During construction, modifications may occur to dimensions, areas, fittings, finishes, and specifications, in accordance with the terms of the contract for sale. Furniture and furnishings shown are for illustrative purposes only and are not included in the sale. Purchasers should refer to their contract for sale for a complete list of finishes and inclusions. The placement of furniture and furnishings does not reflect the final positioning of power outlets, TV connection points, or similar services. All graphics, including tile layouts, balustrades, and other design elements, are indicative only, and bulkheads for services may not be depicted. Prospective purchasers must rely on their own enquiries and the terms outlined in the contract of sale.

# ONE OVAL

SUBI EAST



GARDEN HOMES  
TYPE G-B4



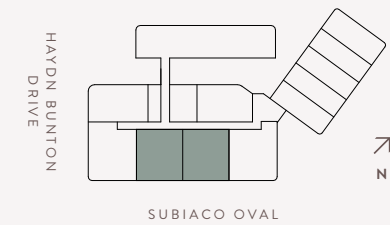
2	2	1	1

APARTMENT

Number	303, 304 (Mirror of 303)
Level	3

AREA

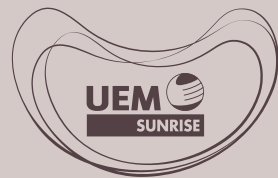
Internal	127m <sup>2</sup>
Balcony	31m <sup>2</sup>
Store	5m <sup>2</sup>
Car Bay	13m <sup>2</sup>
Total	176m <sup>2</sup>



DISCLAIMER: The layout plans have been prepared prior to formal approvals and construction and are intended for marketing purposes only. There is no guarantee the plans are accurate and they may be subject to change. During construction, modifications may occur to dimensions, areas, fittings, finishes, and specifications, in accordance with the terms of the contract for sale. Furniture and furnishings shown are for illustrative purposes only and are not included in the sale. Purchasers should refer to their contract for sale for a complete list of finishes and inclusions. The placement of furniture and furnishings does not reflect the final positioning of power outlets, TV connection points, or similar services. All graphics, including tile layouts, balustrades, and other design elements, are indicative only, and bulkheads for services may not be depicted. Prospective purchasers must rely on their own enquiries and the terms outlined in the contract of sale.

# ONE OVAL

SUBI EAST



GARDEN HOMES  
TYPE G-B5



\* Fixed full height glazing panel

2	2.5	1	1

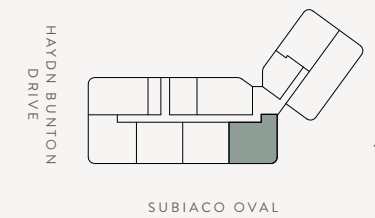
APARTMENT

Number 401, 505, 605, 705, 805, 905, 1005,  
1105, 1205, 1305

Level 4, 5 to 13

AREA

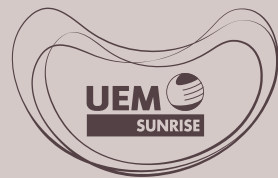
Internal	121m <sup>2</sup>
Balcony	21m <sup>2</sup>
Store	5m <sup>2</sup>
Car Bay	13m <sup>2</sup>
Total	160m <sup>2</sup>



DISCLAIMER: The layout plans have been prepared prior to formal approvals and construction and are intended for marketing purposes only. There is no guarantee the plans are accurate and they may be subject to change. During construction, modifications may occur to dimensions, areas, fittings, finishes, and specifications, in accordance with the terms of the contract for sale. Furniture and furnishings shown are for illustrative purposes only and are not included in the sale. Purchasers should refer to their contract for sale for a complete list of finishes and inclusions. The placement of furniture and furnishings does not reflect the final positioning of power outlets, TV connection points, or similar services. All graphics, including tile layouts, balustrades, and other design elements, are indicative only, and bulkheads for services may not be depicted. Prospective purchasers must rely on their own enquiries and the terms outlined in the contract of sale.

# ONE OVAL

SUBI EAST



GARDEN HOMES  
TYPE G-B6



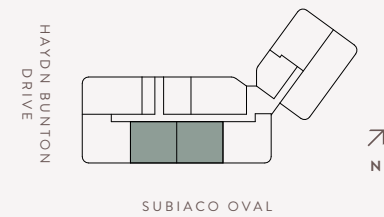
APARTMENT

Number 402, 403, 506, 507, 606, 607, 706,  
707, 806, 807, 906, 907, 1006, 1007,  
1106, 1107, 1206, 1207, 1306, 1307

Level 4, 5 to 13

AREA

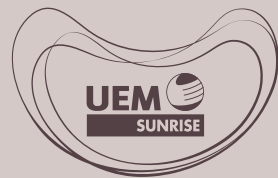
Internal	114m <sup>2</sup>
Balcony	14m <sup>2</sup>
Store	5m <sup>2</sup>
Car Bay	13m <sup>2</sup>
Total	146m <sup>2</sup>



DISCLAIMER: The layout plans have been prepared prior to formal approvals and construction and are intended for marketing purposes only. There is no guarantee the plans are accurate and they may be subject to change. During construction, modifications may occur to dimensions, areas, fittings, finishes, and specifications, in accordance with the terms of the contract for sale. Furniture and furnishings shown are for illustrative purposes only and are not included in the sale. Purchasers should refer to their contract for sale for a complete list of finishes and inclusions. The placement of furniture and furnishings does not reflect the final positioning of power outlets, TV connection points, or similar services. All graphics, including tile layouts, balustrades, and other design elements, are indicative only, and bulkheads for services may not be depicted. Prospective purchasers must rely on their own enquiries and the terms outlined in the contract of sale.

# ONE OVAL

SUBI EAST



GARDEN HOMES  
TYPE G-B7



2	2	1	1

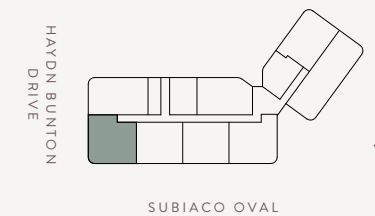
APARTMENT

Number 404, 508, 608, 708, 808, 908,  
1008, 1108, 1208, 1308

Level 4, 5 to 13

AREA

Internal	129m <sup>2</sup>
Balcony	21m <sup>2</sup>
Store	5m <sup>2</sup>
Car Bay	13m <sup>2</sup>
Total	168m <sup>2</sup>



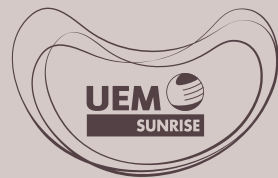
DISCLAIMER: The layout plans have been prepared prior to formal approvals and construction and are intended for marketing purposes only. There is no guarantee the plans are accurate and they may be subject to change. During construction, modifications may occur to dimensions, areas, fittings, finishes, and specifications, in accordance with the terms of the contract for sale. Furniture and furnishings shown are for illustrative purposes only and are not included in the sale. Purchasers should refer to their contract for sale for a complete list of finishes and inclusions. The placement of furniture and furnishings does not reflect the final positioning of power outlets, TV connection points, or similar services. All graphics, including tile layouts, balustrades, and other design elements, are indicative only, and bulkheads for services may not be depicted. Prospective purchasers must rely on their own enquiries and the terms outlined in the contract of sale.



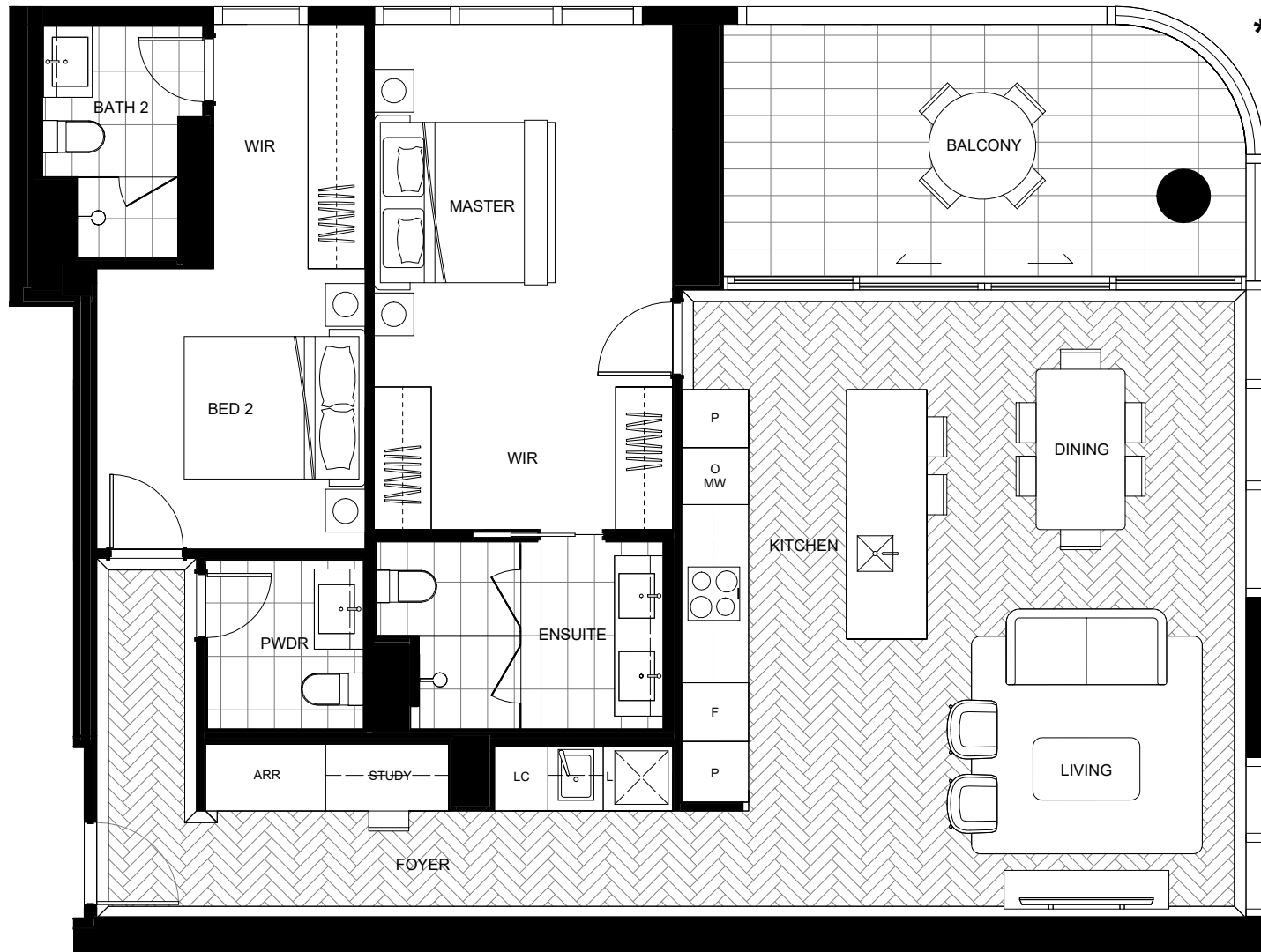
\* Fixed full height glazing panel

# ONE OVAL

SUBI EAST



GARDEN HOMES  
TYPE G-B8



\* Fixed full height glazing panel

2	2.5	1	1

APARTMENT

Number 503, 603, 703, 803, 903,  
1003, 1103, 1203, 1303

Level 5 to 13

AREA

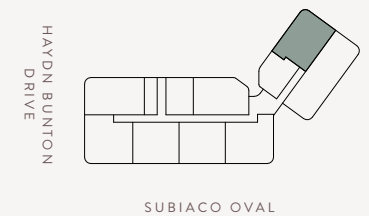
Internal 122m<sup>2</sup>

Balcony 18m<sup>2</sup>

Store 5m<sup>2</sup>

Car Bay 13m<sup>2</sup>

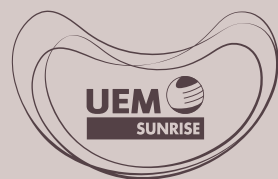
Total 158m<sup>2</sup>



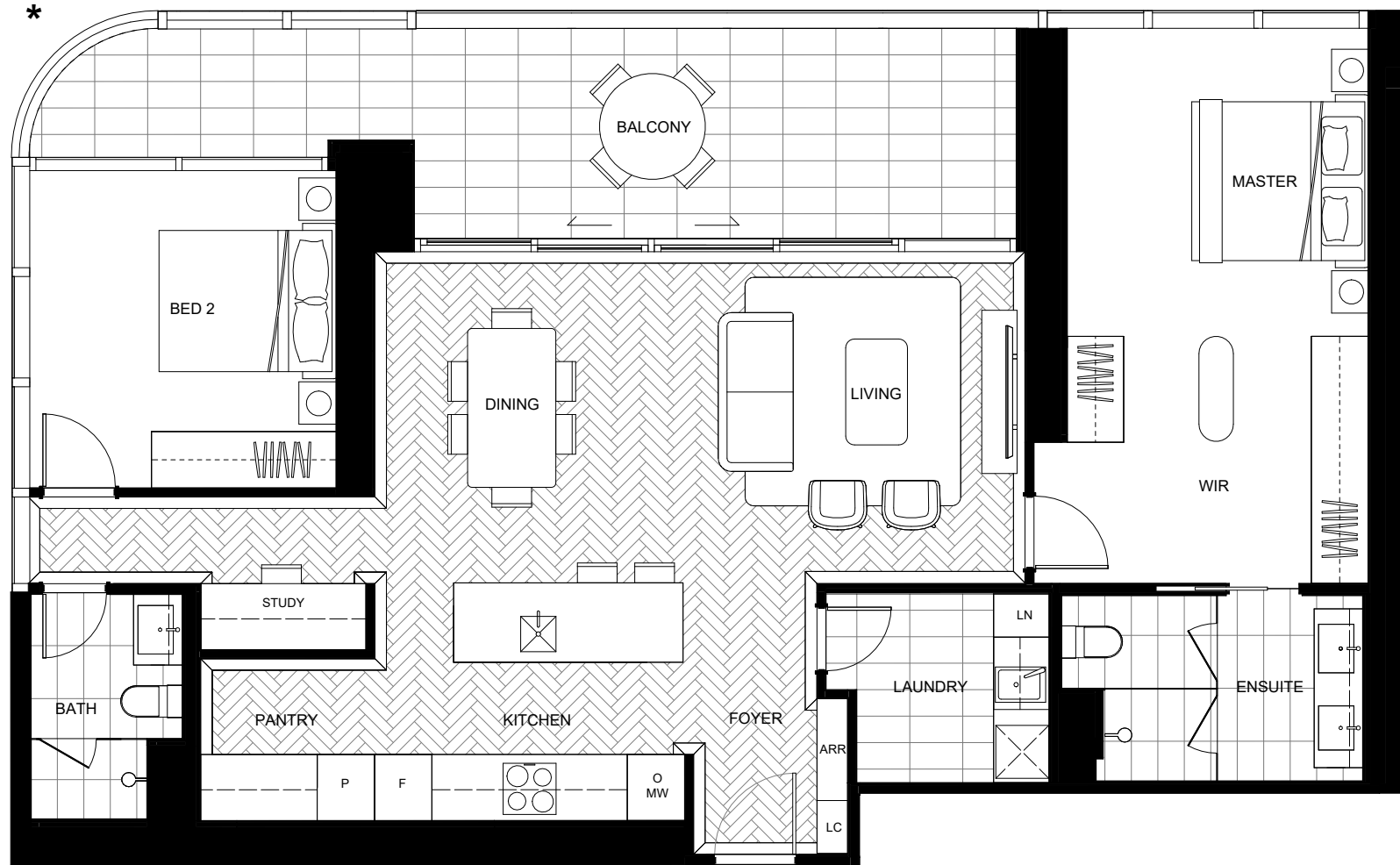
DISCLAIMER: The layout plans have been prepared prior to formal approvals and construction and are intended for marketing purposes only. There is no guarantee the plans are accurate and they may be subject to change. During construction, modifications may occur to dimensions, areas, fittings, finishes, and specifications, in accordance with the terms of the contract for sale. Furniture and furnishings shown are for illustrative purposes only and are not included in the sale. Purchasers should refer to their contract for sale for a complete list of finishes and inclusions. The placement of furniture and furnishings does not reflect the final positioning of power outlets, TV connection points, or similar services. All graphics, including tile layouts, balustrades, and other design elements, are indicative only, and bulkheads for services may not be depicted. Prospective purchasers must rely on their own enquiries and the terms outlined in the contract of sale.

# ONE OVAL

SUBI EAST



HORIZON HOMES  
TYPE H-B2



\* Fixed full height glazing panel

2	2	1	2

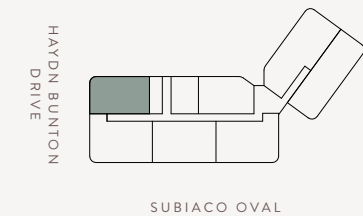
APARTMENT

Number 1407, 1507, 1607, 1707, 1807, 1907, 2007, 2107, 2207, 2307, 2407, 2507

Level 14 to 25

AREA

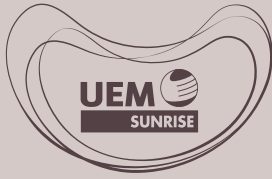
Internal	120m <sup>2</sup>
Balcony	24m <sup>2</sup>
Store	5m <sup>2</sup>
Car Bay	24m <sup>2</sup>
Total	173m <sup>2</sup>



DISCLAIMER: The layout plans have been prepared prior to formal approvals and construction and are intended for marketing purposes only. There is no guarantee the plans are accurate and they may be subject to change. During construction, modifications may occur to dimensions, areas, fittings, finishes, and specifications, in accordance with the terms of the contract for sale. Furniture and furnishings shown are for illustrative purposes only and are not included in the sale. Purchasers should refer to their contract for sale for a complete list of finishes and inclusions. The placement of furniture and furnishings does not reflect the final positioning of power outlets, TV connection points, or similar services. All graphics, including tile layouts, balustrades, and other design elements, are indicative only, and bulkheads for services may not be depicted. Prospective purchasers must rely on their own enquiries and the terms outlined in the contract of sale.

# ONE OVAL

SUBI EAST



HORIZON HOMES  
TYPE H-B3



2	2	1	2

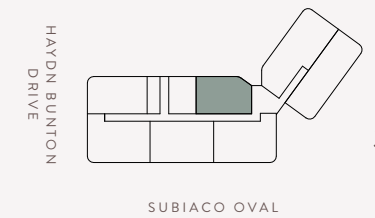
APARTMENT

Number 1401, 1501, 1601, 1701, 1801, 1901, 2001,  
2101, 2201, 2301, 2401, 2501

Level 14 to 25

AREA

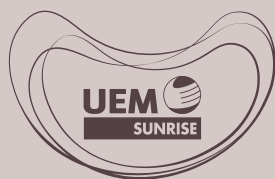
Internal	111m <sup>2</sup>
Balcony	17m <sup>2</sup>
Store	5m <sup>2</sup>
Car Bay	24m <sup>2</sup>
Total	157m <sup>2</sup>



DISCLAIMER: The layout plans have been prepared prior to formal approvals and construction and are intended for marketing purposes only. There is no guarantee the plans are accurate and they may be subject to change. During construction, modifications may occur to dimensions, areas, fittings, finishes, and specifications, in accordance with the terms of the contract for sale. Furniture and furnishings shown are for illustrative purposes only and are not included in the sale. Purchasers should refer to their contract for sale for a complete list of finishes and inclusions. The placement of furniture and furnishings does not reflect the final positioning of power outlets, TV connection points, or similar services. All graphics, including tile layouts, balustrades, and other design elements, are indicative only, and bulkheads for services may not be depicted. Prospective purchasers must rely on their own enquiries and the terms outlined in the contract of sale.

# ONE OVAL

SUBI EAST



SKY HOMES  
TYPE S-B2

			
2	2	1	2

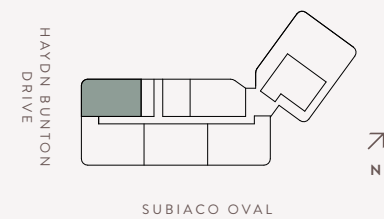


APARTMENT

Number	2605, 2705, 2805
Level	26 to 28

AREA

Internal	120m <sup>2</sup>
Balcony	24m <sup>2</sup>
Store	10m <sup>2</sup>
Car Bay	24m <sup>2</sup>
Total	178m <sup>2</sup>

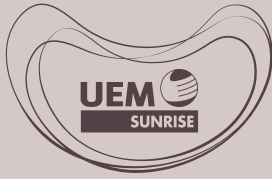


\* Fixed full height glazing panel

DISCLAIMER: The layout plans have been prepared prior to formal approvals and construction and are intended for marketing purposes only. There is no guarantee the plans are accurate and they may be subject to change. During construction, modifications may occur to dimensions, areas, fittings, finishes, and specifications, in accordance with the terms of the contract for sale. Furniture and furnishings shown are for illustrative purposes only and are not included in the sale. Purchasers should refer to their contract for sale for a complete list of finishes and inclusions. The placement of furniture and furnishings does not reflect the final positioning of power outlets, TV connection points, or similar services. All graphics, including tile layouts, balustrades, and other design elements, are indicative only, and bulkheads for services may not be depicted. Prospective purchasers must rely on their own enquiries and the terms outlined in the contract of sale.

# ONE OVAL

SUBI EAST



SKY HOMES  
TYPE S-B2



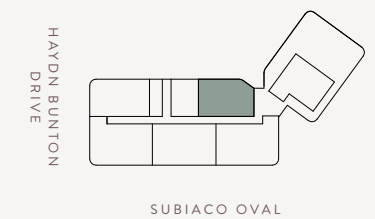
2	2	1	2

APARTMENT

Number	2601, 2701, 2801
Level	26 to 28

AREA

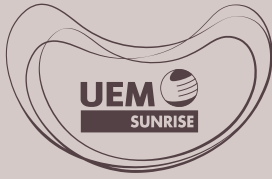
Internal	111m <sup>2</sup>
Balcony	17m <sup>2</sup>
Store	10m <sup>2</sup>
Car Bay	24m <sup>2</sup>
Total	162m <sup>2</sup>



DISCLAIMER: The layout plans have been prepared prior to formal approvals and construction and are intended for marketing purposes only. There is no guarantee the plans are accurate and they may be subject to change. During construction, modifications may occur to dimensions, areas, fittings, finishes, and specifications, in accordance with the terms of the contract for sale. Furniture and furnishings shown are for illustrative purposes only and are not included in the sale. Purchasers should refer to their contract for sale for a complete list of finishes and inclusions. The placement of furniture and furnishings does not reflect the final positioning of power outlets, TV connection points, or similar services. All graphics, including tile layouts, balustrades, and other design elements, are indicative only, and bulkheads for services may not be depicted. Prospective purchasers must rely on their own enquiries and the terms outlined in the contract of sale.

# ONE OVAL

SUBI EAST



SKY HOMES  
TYPE S-B9



2	2	1	2

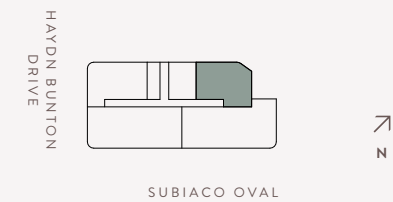
APARTMENT

Number 2901, 3001, 3101, 3201, 3301, 3401

Level 29 to 34

AREA

Internal	124m <sup>2</sup>
Balcony	17m <sup>2</sup>
Store	10m <sup>2</sup>
Car Bay	26m <sup>2</sup>
Total	177m <sup>2</sup>



DISCLAIMER: The layout plans have been prepared prior to formal approvals and construction and are intended for marketing purposes only. There is no guarantee the plans are accurate and they may be subject to change. During construction, modifications may occur to dimensions, areas, fittings, finishes, and specifications, in accordance with the terms of the contract for sale. Furniture and furnishings shown are for illustrative purposes only and are not included in the sale. Purchasers should refer to their contract for sale for a complete list of finishes and inclusions. The placement of furniture and furnishings does not reflect the final positioning of power outlets, TV connection points, or similar services. All graphics, including tile layouts, balustrades, and other design elements, are indicative only, and bulkheads for services may not be depicted. Prospective purchasers must rely on their own enquiries and the terms outlined in the contract of sale.