



More room for living.

Enjoy more choice and flexibility with luxury two bedroom apartments.

BEDROOM

2

**Shenton
Quarter.**



Exclusive and secure carpark entry for residents and their visitors from Thorburn Way

Spaces to live, play and enjoy.

- Spacious high ceilings
- 100% wool carpets
- Pre-finished engineered timber floorboards (2 bed/2 bath)
- Stone benchtops
- Smeg oven, cooktop, rangehood and dishwasher
- Built-in pantry, drawers and bin
- Energy efficient LED lighting
- Pay TV and internet ready
- 4 electric vehicle charging points in residential carpark area

Apartment Type 2B



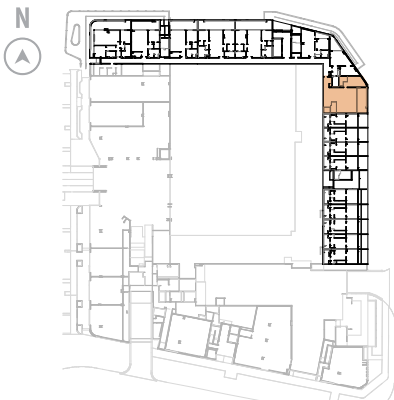
All areas shown are measured Architectural Areas. Dimensions and areas are approximate and are subject to change without notice. Architectural Areas may differ from the areas shown on the Strata Plan. Buyers should refer to the definition of Architectural Areas in Annexure F of the Contract of Sale and to the proposed Strata Plan for their specific apartment in Annexure J of the Contract of Sale. Variations in design can occur in order to comply with the dictates of good construction practice. All the finishes, fixtures, electrical services and facilities illustrated or referred to are subject to availability and may vary. Loose furniture, white goods and planters are not included. Prospective purchasers must rely on their own enquiries and should refer to the Conditions and all annexures contained in the Contract of Sale.

Apt #	Level	Aspect	Internal	Terrace	Store	Car Bay	Car Bay	Total
1	Lower Ground	North	154m ²	22m ²	4m ²	26m ²	2	206m ²

Apartment Type 2C



Apt #	Level	Aspect	Internal	Balcony	Store	Car Bay	Car Bay	Total
21	Mezzanine	East	104m ²	17m ²	4m ²	13m ²	1	138m ²

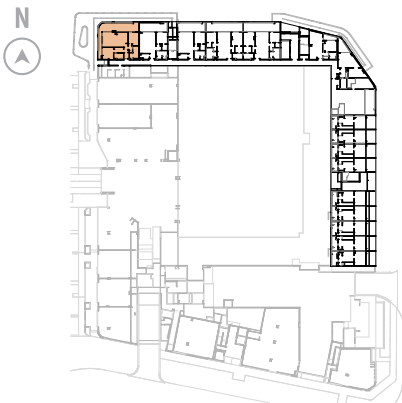


All areas shown are measured Architectural Areas. Dimensions and areas are approximate and are subject to change without notice. Architectural Areas may differ from the areas shown on the Strata Plan. Buyers should refer to the definition of Architectural Areas in Annexure F of the Contract of Sale and to the proposed Strata Plan for their specific apartment in Annexure J of the Contract of Sale. Variations in design can occur in order to comply with the dictates of good construction practice. All the finishes, fixtures, electrical services and facilities illustrated or referred to are subject to availability and may vary. Loose furniture, white goods and planters are not included. Prospective purchasers must rely on their own enquiries and should refer to the Conditions and all annexures contained in the Contract of Sale.

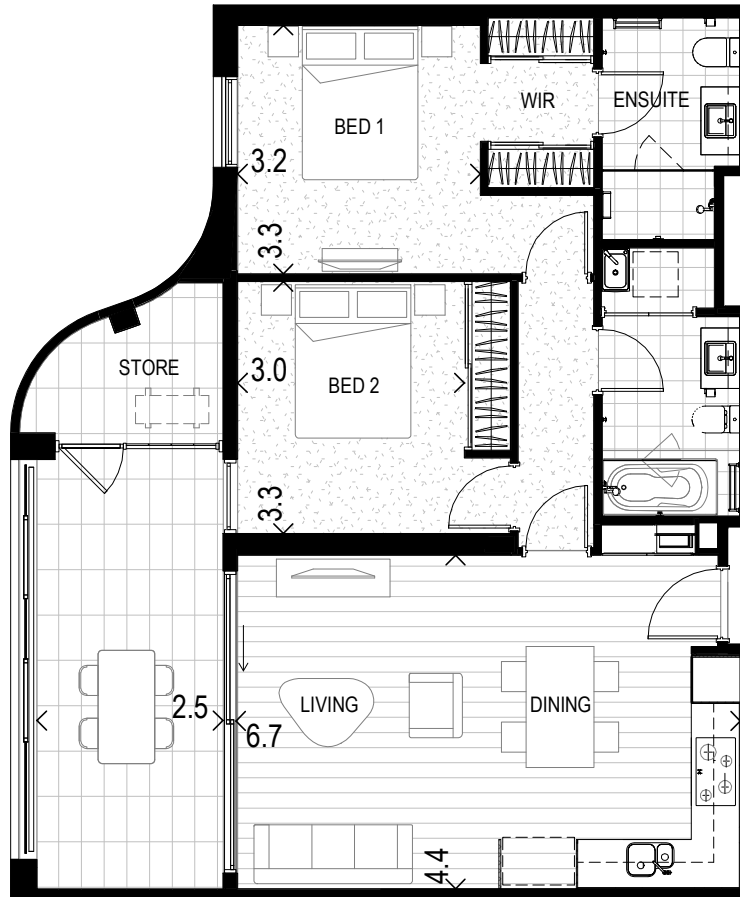
Apartment Type 2D



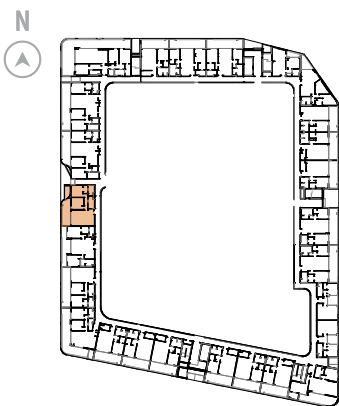
Apt #	Level	Aspect	Internal	Balcony	Store	Car Bay	Car Bay	Total
14	Mezzanine	North/West	85m ²	36m ²	4m ²	13m ²	1	138m ²



Apartment Type 2E.1

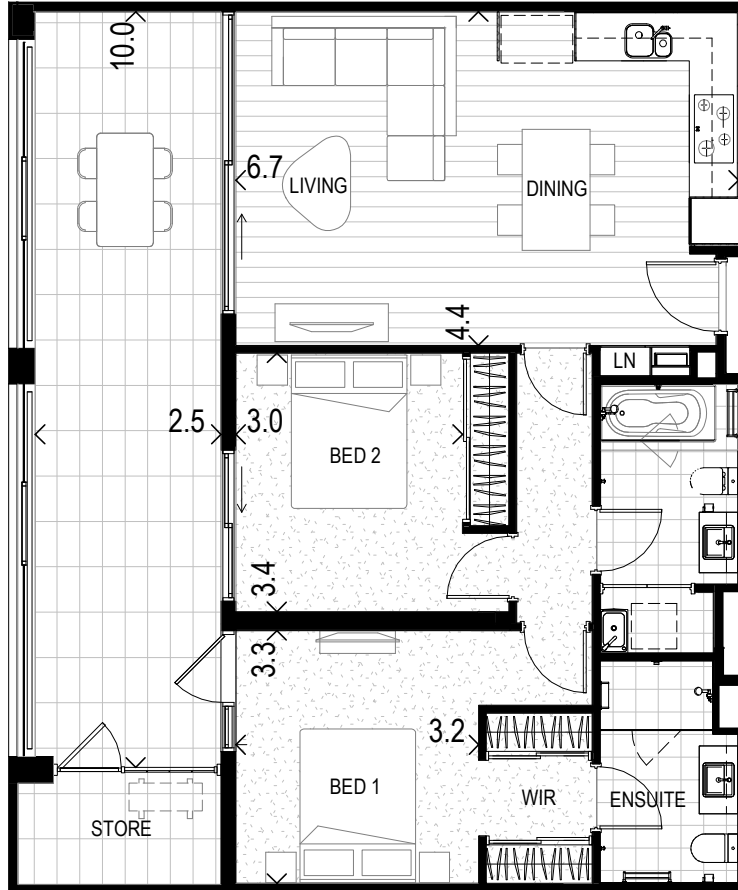


Apt #	Level	Aspect	Internal	Balcony	Store	Car Bay	Car Bay	Total
45	Level 1	West	82m ²	16m ²	4m ²	13m ²	1	115m ²
71	Level 2	West	82m ²	16m ²	4m ²	26m ²	2T	128m ²

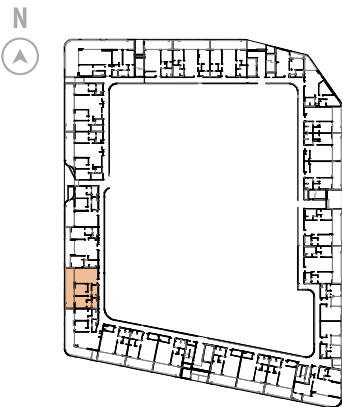


All areas shown are measured Architectural Areas. Dimensions and areas are approximate and are subject to change without notice. Architectural Areas may differ from the areas shown on the Strata Plan. Buyers should refer to the definition of Architectural Areas in Annexure F of the Contract of Sale and to the proposed Strata Plan for their specific apartment in Annexure J of the Contract of Sale. Variations in design can occur in order to comply with the dictates of good construction practice. All the finishes, fixtures, electrical services and facilities illustrated or referred to are subject to availability and may vary. Loose furniture, white goods and planters are not included. Prospective purchasers must rely on their own enquiries and should refer to the Conditions and all annexures contained in the Contract of Sale.

Apartment Type 2E.2

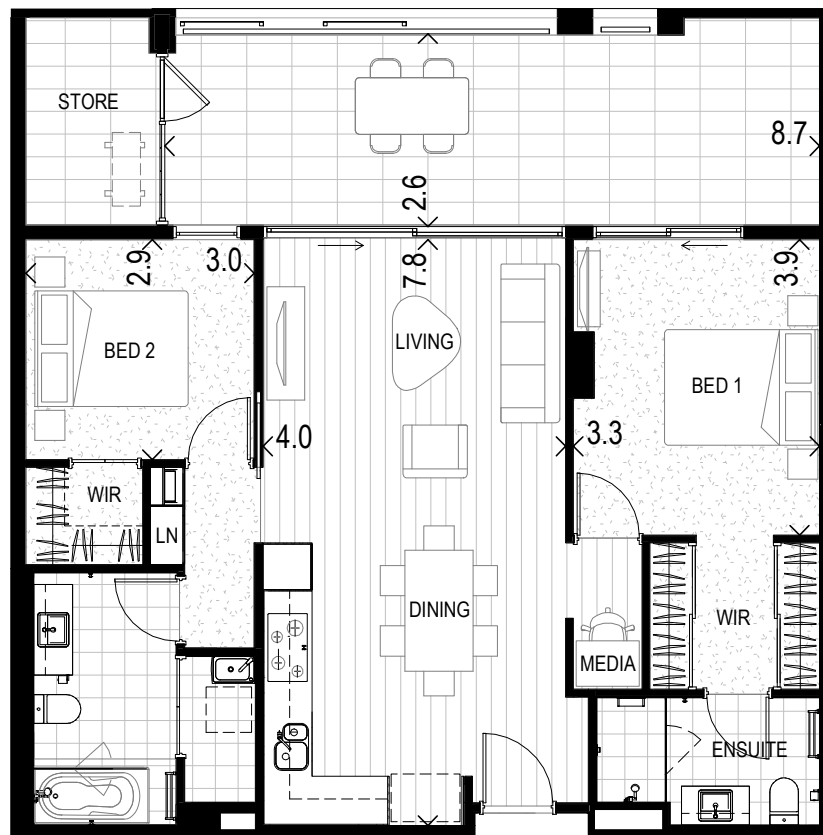


Apt #	Level	Aspect	Internal	Balcony	Store	Car Bay	Car Bay	Total
43	Level 1	West	81m ²	28m ²	4m ²	13m ²	1	126m ²
69	Level 2	West	81m ²	28m ²	9m ²	26m ²	2T	144m ²

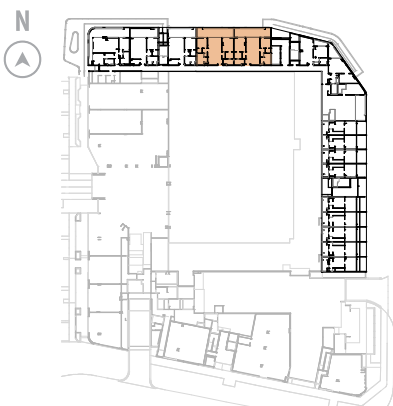


Scale 1:100 (A4)

Apartment Type 2G.1

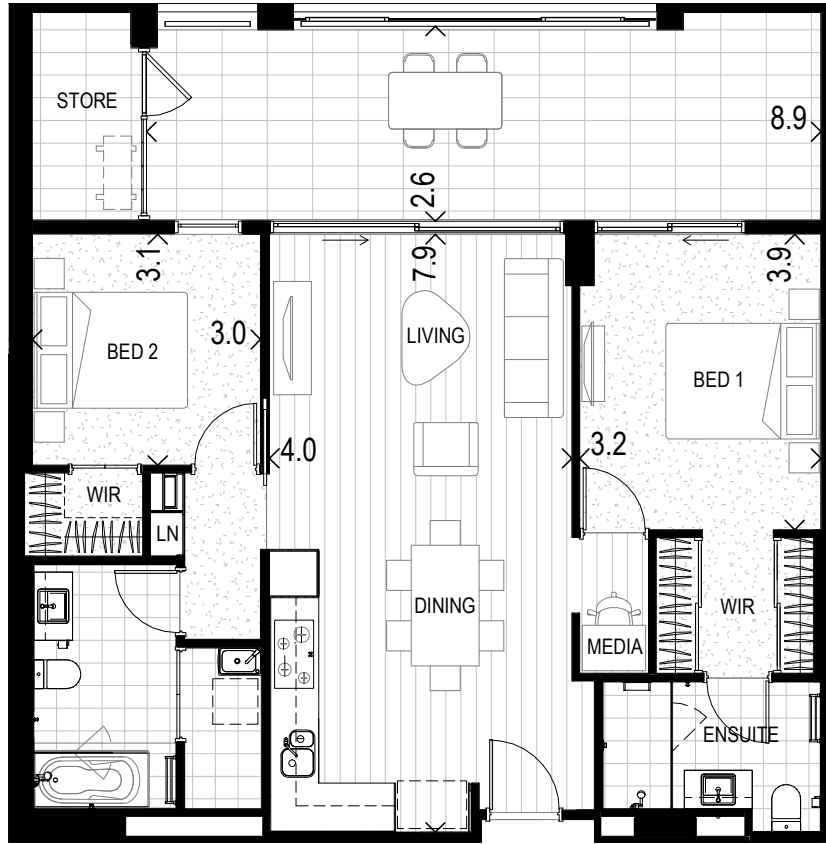


Apt #	Level	Aspect	Internal	Balcony	Store	Car Bay	Car Bay	Total
17	Mezzanine	North	85m ²	25m ²	4m ²	26m ²	2T	140m ²
18	Mezzanine	North	85m ²	25m ²	4m ²	26m ²	2	140m ²
24	Level 1	North	85m ²	25m ²	5m ²	26m ²	2T	141m ²
25	Level 1	North	85m ²	25m ²	4m ²	26m ²	2T	140m ²
50	Level 2	North	85m ²	25m ²	4m ²	26m ²	2T	140m ²
51	Level 2	North	85m ²	25m ²	4m ²	26m ²	2T	140m ²

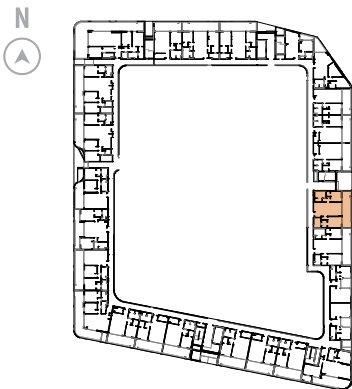


All areas shown are measured Architectural Areas. Dimensions and areas are approximate and are subject to change without notice. Architectural Areas may differ from the areas shown on the Strata Plan. Buyers should refer to the definition of Architectural Areas in Annexure F of the Contract of Sale and to the proposed Strata Plan for their specific apartment in Annexure J of the Contract of Sale. Variations in design can occur in order to comply with the dictates of good construction practice. All the finishes, fixtures, electrical services and facilities illustrated or referred to are subject to availability and may vary. Loose furniture, white goods and planters are not included. Prospective purchasers must rely on their own enquiries and should refer to the Conditions and all annexures contained in the Contract of Sale.

Apartment Type 2G.2

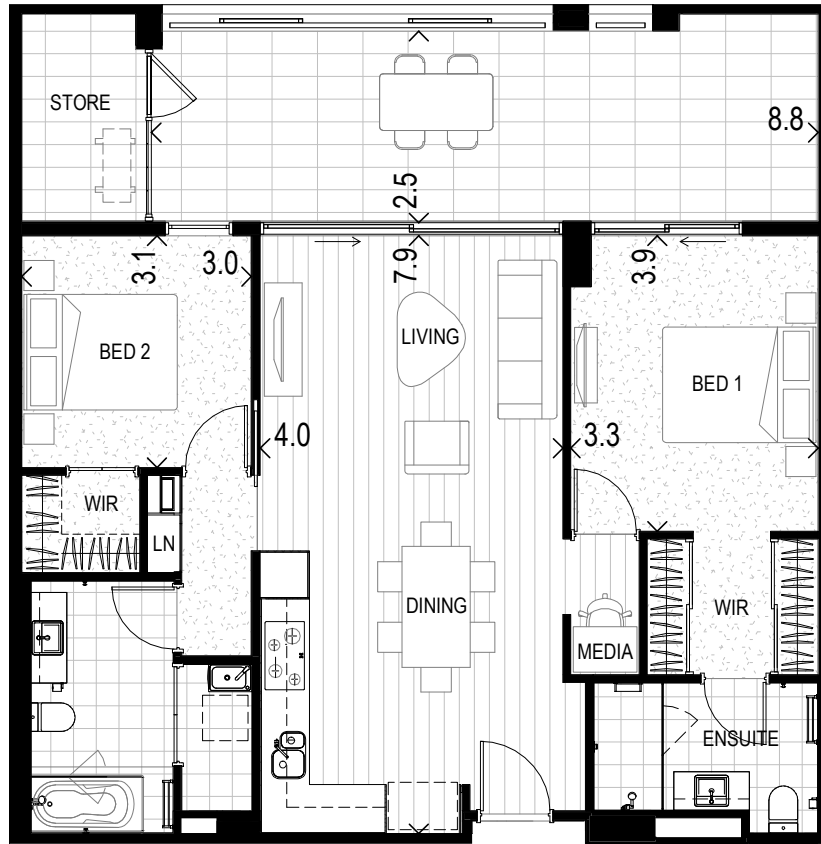


Apt #	Level	Aspect	Internal	Balcony	Store	Car Bay	Car Bay	Total
31	Level 1	East	88m ²	25m ²	4m ²	13m ²	1	130m ²
57	Level 2	East	88m ²	25m ²	4m ²	13m ²	1	130m ²

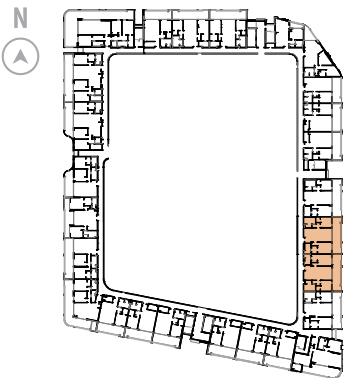


Scale 1:100 (A4)

Apartment Type 2G.3

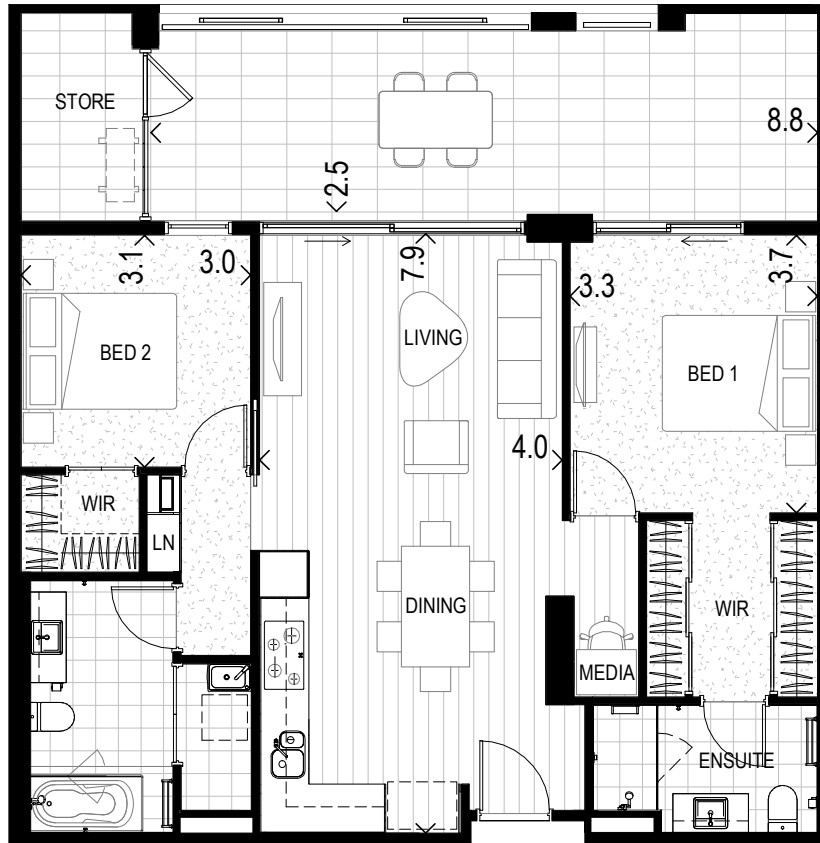


Apt #	Level	Aspect	Internal	Balcony	Store	Car Bay	Car Bay	Total
32	Level 1	East	87m ²	25m ²	4m ²	13m ²	1	129m ²
58	Level 2	East	87m ²	25m ²	4m ²	13m ²	1	129m ²
59	Level 2	East	87m ²	25m ²	4m ²	13m ²	1	129m ²

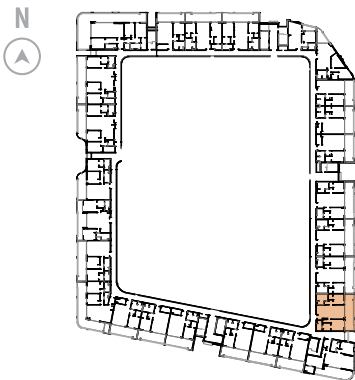


All areas shown are measured Architectural Areas. Dimensions and areas are approximate and are subject to change without notice. Architectural Areas may differ from the areas shown on the Strata Plan. Buyers should refer to the definition of Architectural Areas in Annexure F of the Contract of Sale and to the proposed Strata Plan for their specific apartment in Annexure J of the Contract of Sale. Variations in design can occur in order to comply with the dictates of good construction practice. All the finishes, fixtures, electrical services and facilities illustrated or referred to are subject to availability and may vary. Loose furniture, white goods and planters are not included. Prospective purchasers must rely on their own enquiries and should refer to the Conditions and all annexures contained in the Contract of Sale.

Apartment Type 2G.4



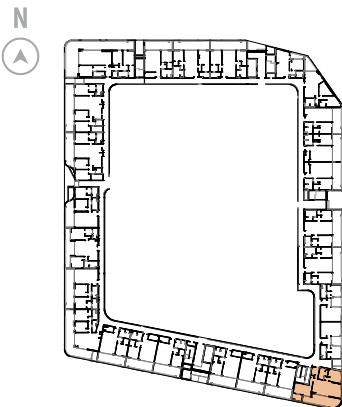
Apt #	Level	Aspect	Internal	Balcony	Store	Car Bay	Car Bay	Total
60	Level 2	East	88m ²	26m ²	4m ²	13m ²	1	131m ²



Apartment Type 2H



Apt #	Level	Aspect	Internal	Balcony	Store	Car Bay	Car Bay	Total
35	Level 1	South/East	96m ²	25m ²	5m ²	26m ²	2	152m ²
61	Level 2	South/East	96m ²	31m ²	6m ²	13m ²	1	146m ²

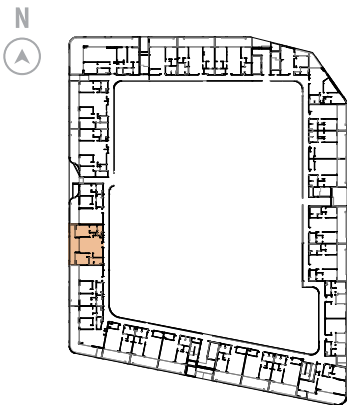


All areas shown are measured Architectural Areas. Dimensions and areas are approximate and are subject to change without notice. Architectural Areas may differ from the areas shown on the Strata Plan. Buyers should refer to the definition of Architectural Areas in Annexure F of the Contract of Sale and to the proposed Strata Plan for their specific apartment in Annexure J of the Contract of Sale. Variations in design can occur in order to comply with the dictates of good construction practice. All the finishes, fixtures, electrical services and facilities illustrated or referred to are subject to availability and may vary. Loose furniture, white goods and planters are not included. Prospective purchasers must rely on their own enquiries and should refer to the Conditions and all annexures contained in the Contract of Sale.

Apartment Type 2I



Apt #	Level	Aspect	Internal	Balcony	Store	Car Bay	Car Bay	Total
44	Level 1	West	88m ²	24m ²	5m ²	26m ²	2T	143m ²
70	Level 2	West	88m ²	24m ²	4m ²	26m ²	2T	142m ²



Scale 1:100 (A4)

Apartment Type 2J



Apt #	Level	Aspect	Internal	Balcony	Store	Car Bay	Car Bay	Total
94	Level 3	Podium	102m ²	32m ² (Terrace)	8m ²	26m ²	2	168m ²
115	Level 4	Podium	102m ²	32m ²	7m ²	26m ²	2	167m ²
136	Level 5	Podium	102m ²	32m ²	7m ²	26m ²	2	167m ²
157	Level 6	Podium	102m ²	32m ²	8m ²	26m ²	2	168m ²



All areas shown are measured Architectural Areas. Dimensions and areas are approximate and are subject to change without notice. Architectural Areas may differ from the areas shown on the Strata Plan. Buyers should refer to the definition of Architectural Areas in Annexure F of the Contract of Sale and to the proposed Strata Plan for their specific apartment in Annexure J of the Contract of Sale. Variations in design can occur in order to comply with the dictates of good construction practice. All the finishes, fixtures, electrical services and facilities illustrated or referred to are subject to availability and may vary. Loose furniture, white goods and planters are not included. Prospective purchasers must rely on their own enquiries and should refer to the Conditions and all annexures contained in the Contract of Sale.

Apartment Type 2K.1



Apt #	Level	Aspect	Internal	Balcony	Store	Car Bay	Car Bay	Total
75	Level 3	North	90m ²	39m ²	5m ²	26m ²	2T	160m ²
79	Level 3	East	90m ²	38m ²	5m ²	26m ²	2T	159m ²
96	Level 4	North	90m ²	17m ²	5m ²	26m ²	2T	138m ²
100	Level 4	East	90m ²	17m ²	5m ²	26m ²	2T	138m ²
117	Level 5	North	90m ²	17m ²	5m ²	26m ²	2T	138m ²
121	Level 5	East	90m ²	17m ²	5m ²	26m ²	2T	138m ²
138	Level 6	North	90m ²	17m ²	5m ²	26m ²	2	138m ²
142	Level 6	East	90m ²	17m ²	5m ²	26m ²	2T	138m ²



Apartment Type 2K.2



All areas shown are measured Architectural Areas. Dimensions and areas are approximate and are subject to change without notice. Architectural Areas may differ from the areas shown on the Strata Plan. Buyers should refer to the definition of Architectural Areas in Annexure F of the Contract of Sale and to the proposed Strata Plan for their specific apartment in Annexure J of the Contract of Sale. Variations in design can occur in order to comply with the dictates of good construction practice. All the finishes, fixtures, electrical services and facilities illustrated or referred to are subject to availability and may vary. Loose furniture, white goods and planters are not included. Prospective purchasers must rely on their own enquiries and should refer to the Conditions and all annexures contained in the Contract of Sale.

Apt #	Level	Aspect	Internal	Balcony	Store	Car Bay	Car Bay	Total
80	Level 3	East	90m ²	38m ²	5m ²	26m ²	2T	159m ²
85	Level 3	North	90m ²	27m ² (Terrace)	6m ²	26m ²	2	149m ²
87	Level 3	South	90m ²	25m ²	4m ²	26m ²	2T	145m ²
91	Level 3	West	90m ²	34m ²	4m ²	26m ²	2T	154m ²
101	Level 4	East	90m ²	17m ²	6m ²	26m ²	2T	139m ²
106	Level 4	North	90m ²	17m ²	6m ²	26m ²	2	139m ²
108	Level 4	South	90m ²	17m ²	4m ²	26m ²	2T	137m ²
112	Level 4	West	90m ²	17m ²	9m ²	26m ²	2T	142m ²
122	Level 5	East	90m ²	17m ²	6m ²	26m ²	2T	139m ²
127	Level 5	North	90m ²	17m ²	6m ²	26m ²	2	139m ²
129	Level 5	South	90m ²	17m ²	4m ²	26m ²	2T	137m ²
133	Level 5	West	90m ²	17m ²	4m ²	24m ²	2T	135m ²
143	Level 6	East	90m ²	17m ²	6m ²	26m ²	2T	139m ²
148	Level 6	North	90m ²	17m ²	6m ²	26m ²	2	139m ²
150	Level 6	South	90m ²	17m ²	4m ²	26m ²	2	137m ²
154	Level 6	West	90m ²	17m ²	4m ²	24m ²	2T	135m ²



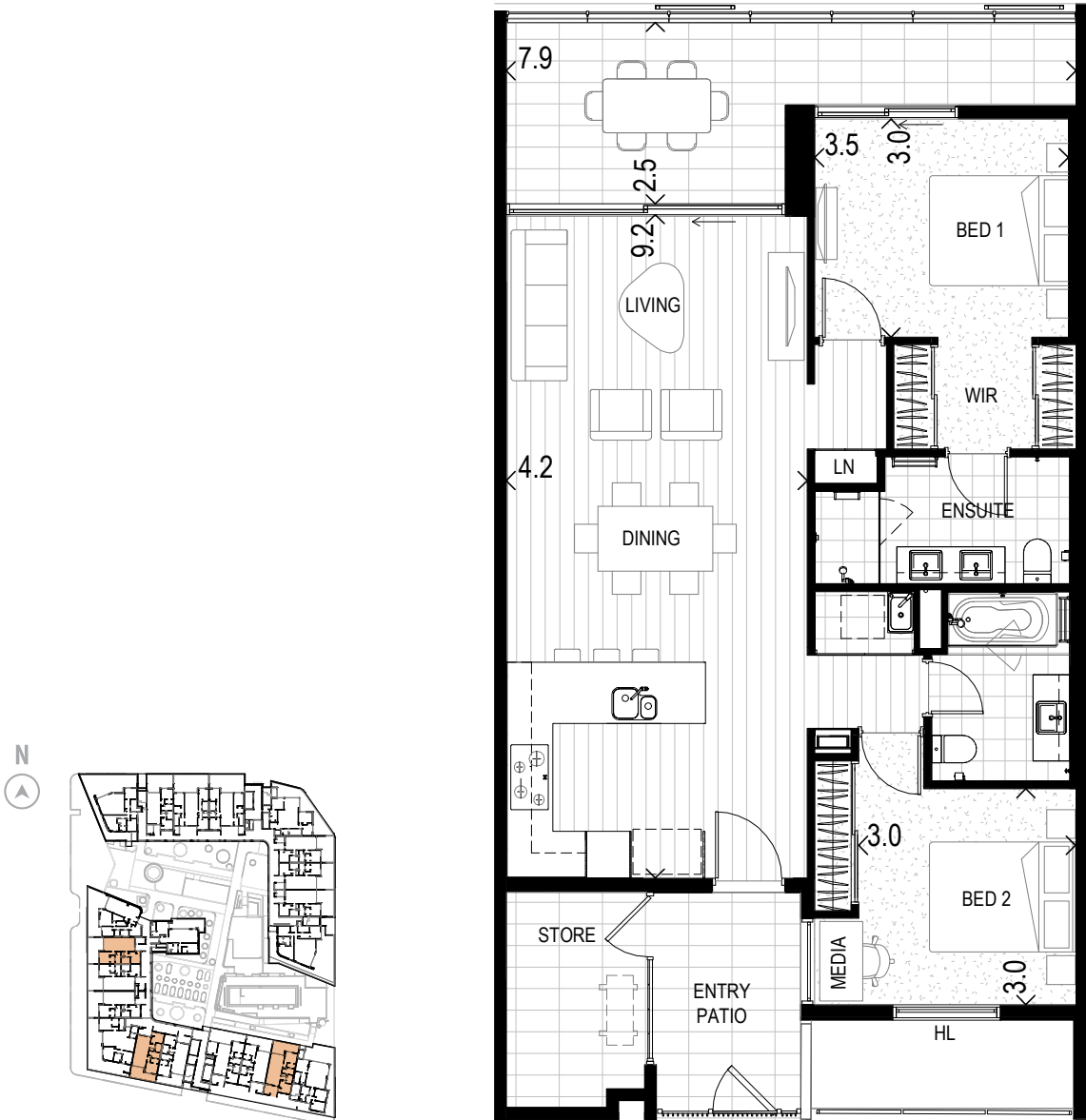
Apartment Type 2K.3



Apt #	Level	Aspect	Internal	Balcony	Store	Car Bay	Car Bay	Total
81	Level 3	East	90m ²	38m ²	5m ²	26m ²	2T	159m ²
90	Level 3	West	90m ²	33m ²	4m ²	26m ²	2T	153m ²
102	Level 4	East	90m ²	17m ²	6m ²	26m ²	2T	139m ²
111	Level 4	West	90m ²	17m ²	4m ²	26m ²	2T	137m ²
123	Level 5	East	90m ²	17m ²	6m ²	26m ²	2T	139m ²
132	Level 5	West	90m ²	17m ²	4m ²	26m ²	2T	137m ²
144	Level 6	East	90m ²	17m ²	6m ²	26m ²	2T	139m ²
153	Level 6	West	90m ²	17m ²	4m ²	24m ²	2T	135m ²

All areas shown are measured Architectural Areas. Dimensions and areas are approximate and are subject to change without notice. Architectural Areas may differ from the areas shown on the Strata Plan. Buyers should refer to the definition of Architectural Areas in Annexure F of the Contract of Sale and to the proposed Strata Plan for their specific apartment in Annexure J of the Contract of Sale. Variations in design can occur in order to comply with the dictates of good construction practice. All the finishes, fixtures, electrical services and facilities illustrated or referred to are subject to availability and may vary. Loose furniture, white goods and planters are not included. Prospective purchasers must rely on their own enquiries and should refer to the Conditions and all annexures contained in the Contract of Sale.

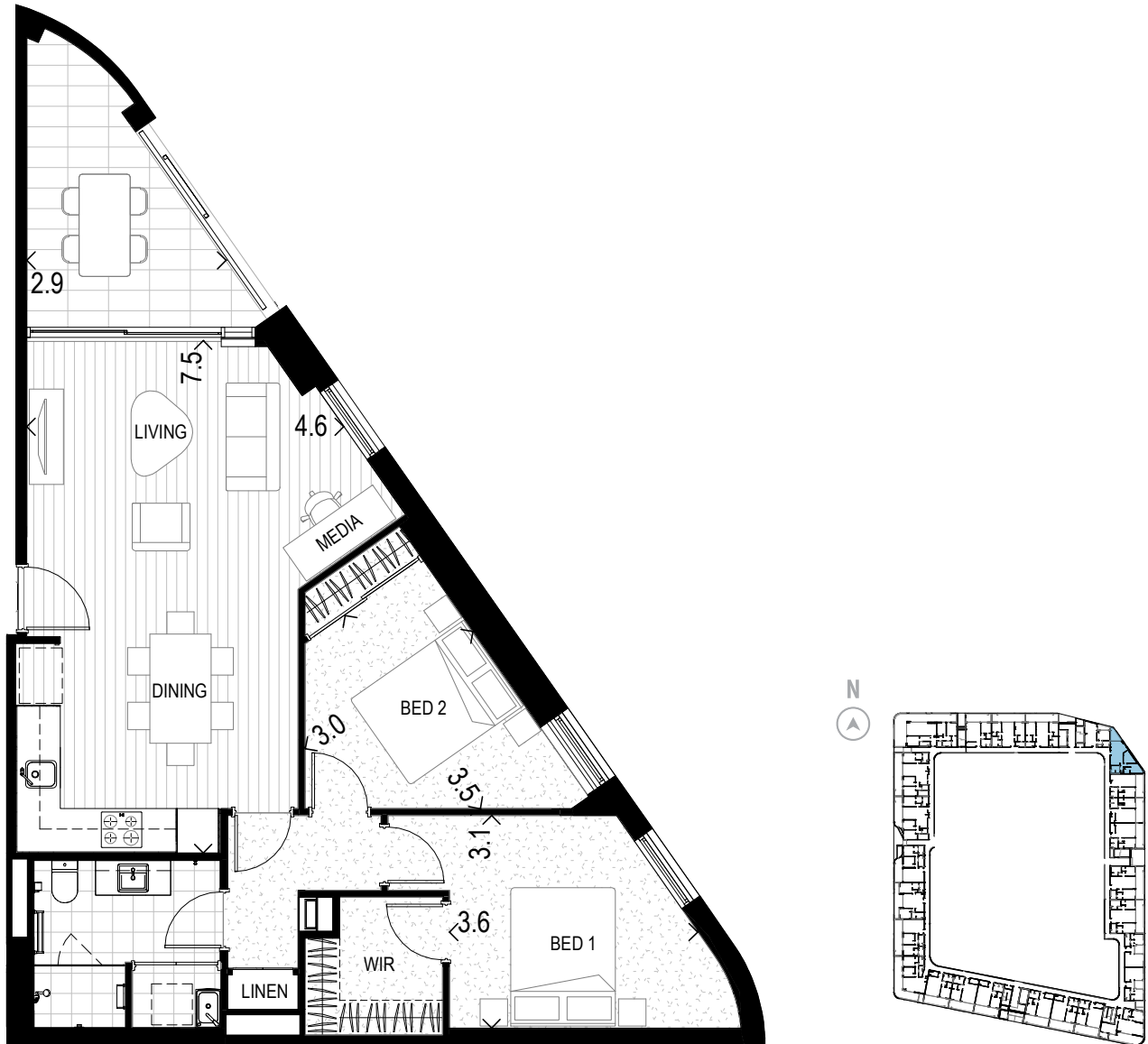
Apartment Type 2K.4



Apt #	Level	Aspect	Internal	Balcony	Store	Car Bay	Car Bay	Total
84	Level 3	North	89m ²	27m ² (Terrace)	5m ²	26m ²	2	147m ²
88	Level 3	South	90m ²	25m ²	4m ²	26m ²	2T	145m ²
92	Level 3	West	90m ²	34m ²	5m ²	26m ²	2T	155m ²
105	Level 4	North	89m ²	17m ²	5m ²	26m ²	2	137m ²
109	Level 4	South	90m ²	17m ²	4m ²	26m ²	2T	137m ²
113	Level 4	West	90m ²	17m ²	5m ²	26m ²	2T	138m ²
126	Level 5	North	89m ²	17m ²	5m ²	26m ²	2	137m ²
130	Level 5	South	90m ²	17m ²	4m ²	26m ²	2T	137m ²
134	Level 5	West	90m ²	17m ²	5m ²	24m ²	2T	136m ²
147	Level 6	North	89m ²	17m ²	5m ²	26m ²	2	137m ²
151	Level 6	South	90m ²	17m ²	4m ²	26m ²	2	137m ²
155	Level 6	West	90m ²	17m ²	5m ²	24m ²	2T	136m ²



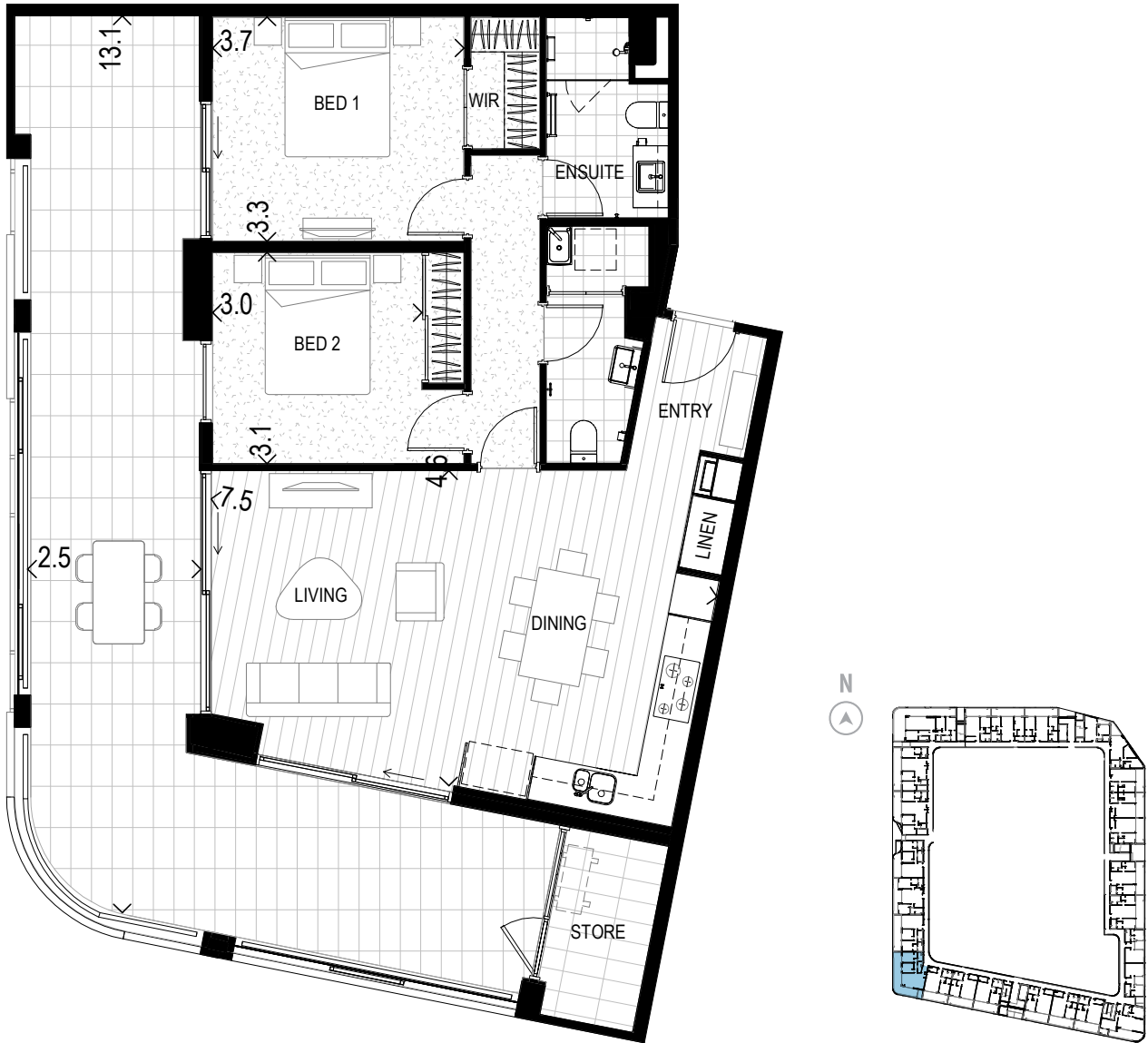
Apartment Type 2A



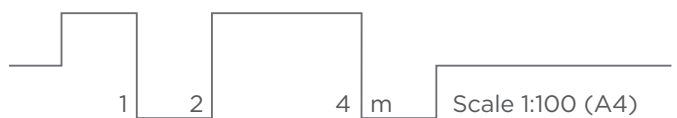
Apt #	Level	Aspect	Internal	Balcony	Store	Car Bay	Car Bay	Total
27	Level 1	North/West	82m ²	10m ²	4m ²	13m ²	1	109m ²
53	Level 2	North/West	82m ²	10m ²	4m ²	13m ²	1	109m ²

All areas shown are measured Architectural Areas. Dimensions and areas are approximate and are subject to change without notice. Architectural Areas may differ from the areas shown on the Strata Plan. Buyers should refer to the definition of Architectural Areas in Annexure F of the Contract of Sale and to the proposed Strata Plan for their specific apartment in Annexure J of the Contract of Sale. Variations in design can occur in order to comply with the dictates of good construction practice. All the finishes, fixtures, electrical services and facilities illustrated or referred to are subject to availability and may vary. Loose furniture, white goods and planters are not included. Prospective purchasers must rely on their own enquiries and should refer to the Conditions and all annexures contained in the Contract of Sale.

Apartment Type 2F



Apt #	Level	Aspect	Internal	Balcony	Store	Car Bay	Car Bay	Total
42	Level 1	South/West	85m ²	50m ²	4m ²	13m ²	1	152m ²
68	Level 2	South/West	85m ²	50m ²	4m ²	13m ²	1	152m ²



Colour Schemes



Scheme A, Acacia



Scheme B, Banksia



Scheme C, Cassia

Artist impression, kitchen and bathroom renders for 3 bedroom apartments only. Please refer to specifications for 2 bedroom finishes.



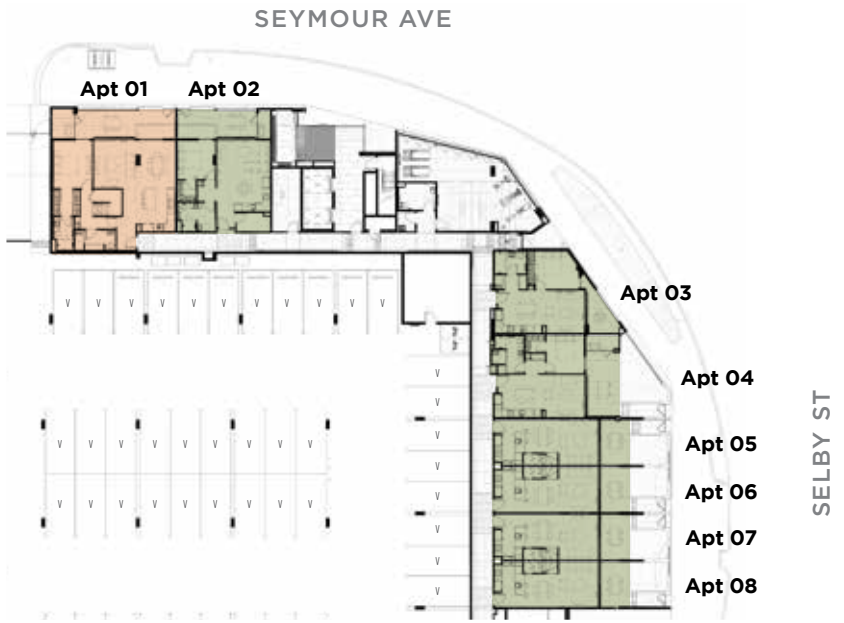
Specifications

Location	Description
GENERAL FINISHES	
Internal Walls Generally	Paint finish.
Ceilings	Generally, 2700mm high in main living/dining room and bedrooms with localised bulkheads. Apartment 1 street level living area 5350mm high ceiling, main bedroom 2600mm high ceiling and 2500mm high ceiling to upstairs family room and bedroom. Apartment 14 generally 2600mm high ceiling in living area and bedrooms with localised bulkheads.
Front Door (to apartment)	Flush panelled with selected hardware. Paint finish.
Internal Doors	Flush panelled doors with selected hardware. Paint finish.
Entry Door Furniture	Chrome finish.
Internal Door Furniture	Chrome finish.
Floors to Kitchen, Living and Dining	Two bedroom, one bathroom apartments: Composite prefinished laminate flooring, on acoustic membrane to comply with applicable National Construction Code. Two bedroom, two bathroom apartments: Pre-finished engineered timber floorboards, on acoustic membrane to comply with applicable National Construction Code.
Floors to Bedroom and Upstairs Living (Apt 1)	100% wool carpet laid on underlay as selected by interior designer.
Skirtings	Paint finish.
External Window / Door Framing System	Powder coated aluminium framed double-glazed system to Australian Standards. Flyscreens to all awning windows and external sliding doors.
Wardrobes / WIR	Two bedroom, two bathroom apartments: Flush panelled or sliding mirrored door(s), complete with shelf and hanging rail. Refer to individual plans.
KITCHEN	
Joinery Cupboards	Laminate finish with soft closers as selected by interior designer.
Bench Tops	Reconstituted stone as selected by interior designer.
Splashback	Reconstituted stone as selected by interior designer.
Sink	Two bedroom, one bathroom apartments: Undermount stainless steel single bowl sink. Two bedroom, two bathroom apartments: Undermount stainless steel 1(1/3)/bowls sink with draining tray accessory.
Sink Mixer Tap	Chrome finish 'goose neck' spout as selected by interior designer.
Pantry	Built-in pantry provided with microwave recess.
Drawers	Built-in drawers.
Bin	Built-in bin provided.
Microwave Recess	Recess (only) with power point provided.
Fridge Recess	980mm (2B/2B) with water supply and power point provided or recess (only) 880mm wide (2B/1B).
BATHROOM/ENSUITE	
Floor	Tiles as selected by interior designer.
Walls	Full height tiling. Tiles as selected by interior designer.
Ceilings	Paint finish.
Shower Screen	Semi frameless glass shower screen.
Shower Mixer	Chrome finish.
Shower Rose	Chrome finish on a rail, with a range of spray patterns.
Basin	Vitreous white china inset basin with chrome waste.
Basin Tapware	Chrome finish.
Toilet Suite	Back to the wall design with dual flush and soft-close seat.
Bath tub (where applicable)	Acrylic bath with tiled hob and openable glass screen as applicable, refer to individual apartment plans.
Mirror	Wall mounted cabinet with mirror doors above vanity as selected by interior designer.
Vanity Top	Reconstituted stone as selected by interior designer.
Vanity Cabinet	Laminate finish as selected by interior designer.
Accessories	Chrome finish as selected by interior designer.

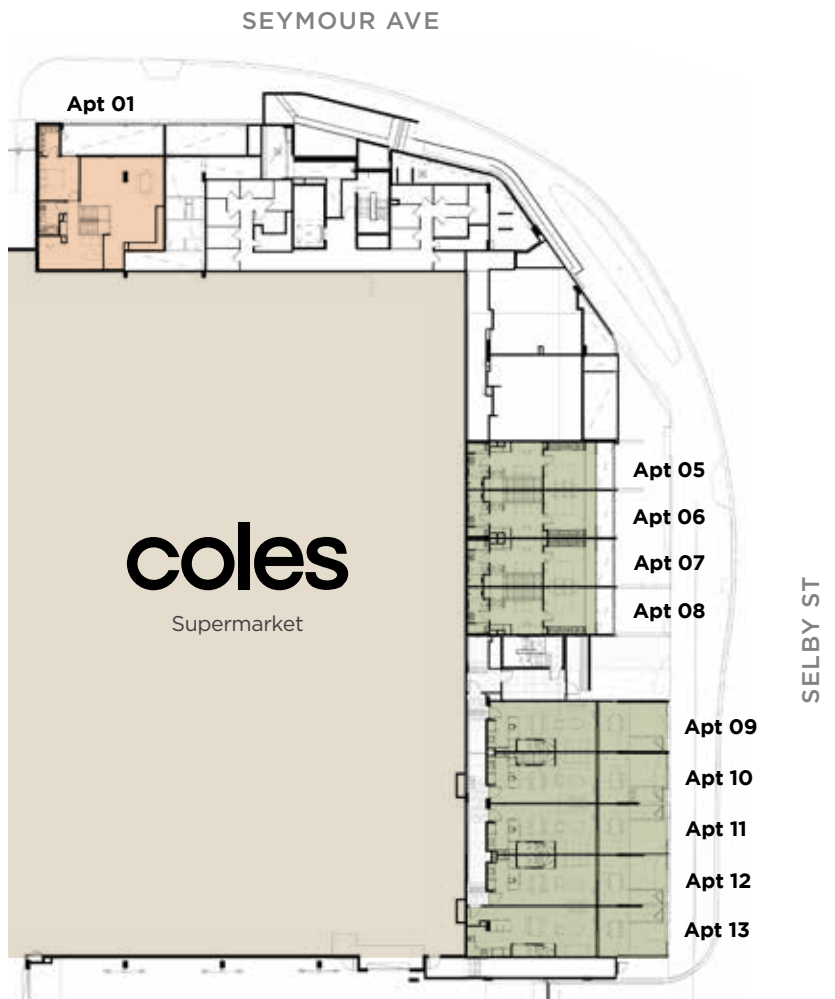
Location	Description
LAUNDRY	
Floor	Tile as selected by interior designer.
Walls	Paint finish with tiled skirting.
Trough	Laundry trough with integral cupboard unit underneath.
Mixer Tap	Chrome finish.
Washing Machine Taps	Wall mounted.
APPLIANCES	
Oven	Smeg 90cm electric programmable oven with stainless steel fascia
Cooktop	Smeg 90cm induction
Rangehood	Smeg 90cm built-in extraction rangehood with integral LED lighting
Dishwasher	Smeg 60cm fully integrated dishwasher
Dryer	Electric clothes dryer provided.
ELECTRICAL	
Lower Ground - Level 5: Lighting - Living, Dining, Bedrooms	Energy efficient surface mounted LED canister lights, LED oyster fittings and recessed LED downlights to architectural and electrical engineer layout. LED strip light to underside of kitchen overhead cabinets included. Apartment 1 has pendant lighting to street level living/dining room as selected by interior designer.
Level 6: Lighting - Living, Dining, Bedrooms	Energy efficient recessed LED downlights to architectural and electrical engineer layout. LED strip light to underside of kitchen overhead cabinets included.
Electrical Outlets	General power and light switches to architects and electrical engineer layouts.
TV Services	Free to air television outlet provided to living room (all) and master bedroom (2B/2B). Apartment 1 upstairs living room provided with free to air television outlet.
Pay Television	Pay TV ready outlet provided to living room (all) and master bedroom (2B/2B). Apartment 1 upstairs family room provided with pay TV outlet. (subscription by resident).
Voice/Data Communications System	Data/phone outlets provided in living room and study nook/media (where provided, refer to individual plans), plus master bedroom (2B/2B). Apartment 1 upstairs living room provided with data outlet. All data/phone outlets are connected to communications hub.
Internet	Provision to apartments (subscription by resident).
Home Network	Provision of communications network hub (hardware not included).
BALCONY	
Floor	Tiles as selected by architect.
Balustrade / Courtyard Fence	Street Level: Masonry walls with powder coated aluminium palisade fence with gate. Mezzanine to Level 2 Powder coated aluminium balustrade with sections in masonry. Level 3: Glazed balustrade with sections in masonry. Level 4 - 6: Glazed balustrade and/or powder coated aluminium balustrade with solid sections in paint finish.
Balcony Screens (where applicable)	Powder coated sliding screen with design motif by Artist to balconies (excludes street level and Level 3, refer to individual apartment plans).
OTHER FACILITIES	
Air-conditioning	Wall mounted reverse cycle air-conditioning provided to main living room and bedroom(s). Condenser unit located in stores, balcony enclosure or carpark depending on apartment location. Refer to floor plans for location.
Other Mechanical Services	Bathroom, powder room and separate laundry (where applicable, refer to individual plan) mechanically exhausted.
Fire Services	Fire alarms and smoke detectors are provided as required by the applicable National Construction Code.
Security Intercom and electronic entry to lobby door	Audio-visual intercom system linking entry foyer door at ground floor level to apartment with electronic control entry to lobby door.
Store Room	Store room provided at front entry, on balcony, in carpark or other ancillary zones, refer to individual plans.
Keys	4 fobs provided for keyless entry into residents' common areas.
Select car bays only	Apartments 17, 24, 25, 44, 90, 91, 92, 111, 112 and 113 have two car bays in tandem arrangement with automated bollard next to residents' visitors car parking area, refer to strata plan.
Remaining car bays	One undercover car bay or two car bays in tandem arrangement or side by side within secure resident's carpark, refer to strata plan.

Disclaimer. All the finishes, electrical services and facilities listed are subject to availability and may vary. Variations in design can occur in order to comply with the dictates of good construction practice. Prospective purchasers must rely on their own enquiries and should refer to the Contract of Sale.

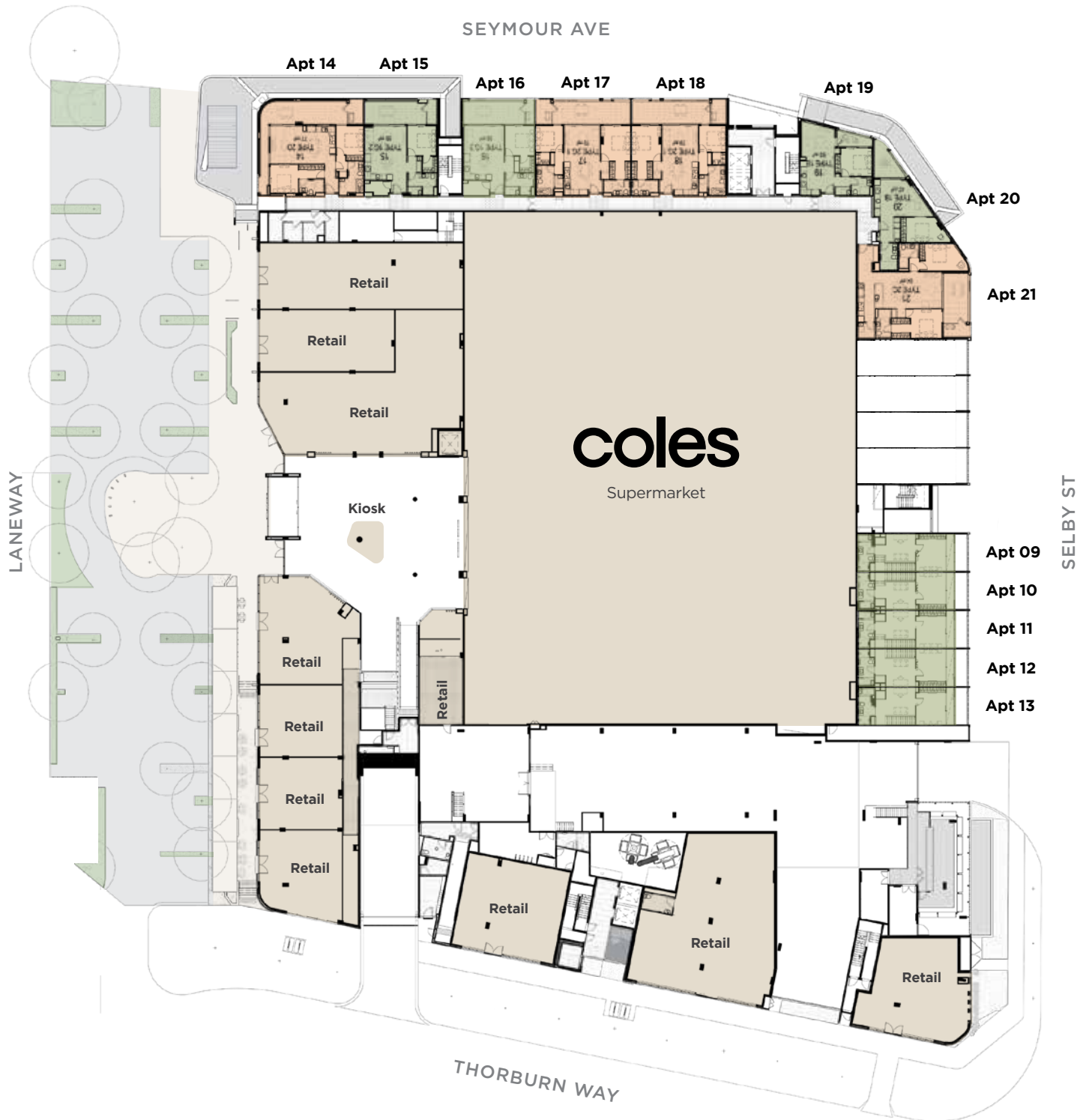
Lower Ground



Ground



Mezzanine

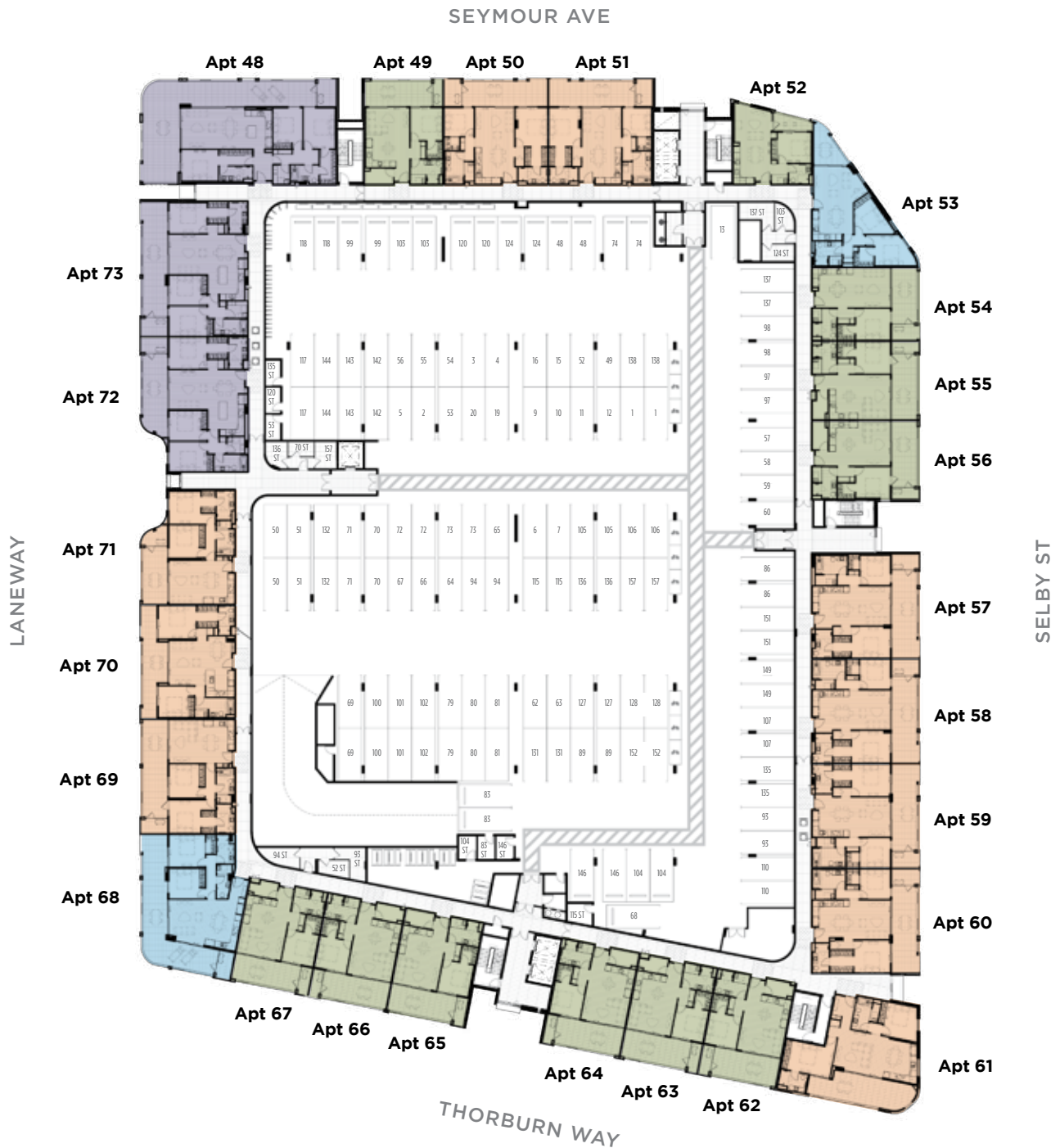


All areas shown are measured Architectural Areas. Dimensions and areas are approximate and are subject to change without notice. Architectural Areas may differ from the areas shown on the Strata Plan. Buyers should refer to the definition of Architectural Areas in Annexure F of the Contract of Sale and to the proposed Strata Plan for their specific apartment in Annexure J of the Contract of Sale. Variations in design can occur in order to comply with the dictates of good construction practice. All the finishes, fixtures, electrical services and facilities illustrated or referred to are subject to availability and may vary. Loose furniture, white goods and planters are not included. Prospective purchasers must rely on their own enquiries and should refer to the Conditions and all annexures contained in the Contract of Sale. The tenancy mix shown is indicative only of the likely retail offering. It is subject to change at the developer's sole discretion.

Level 1

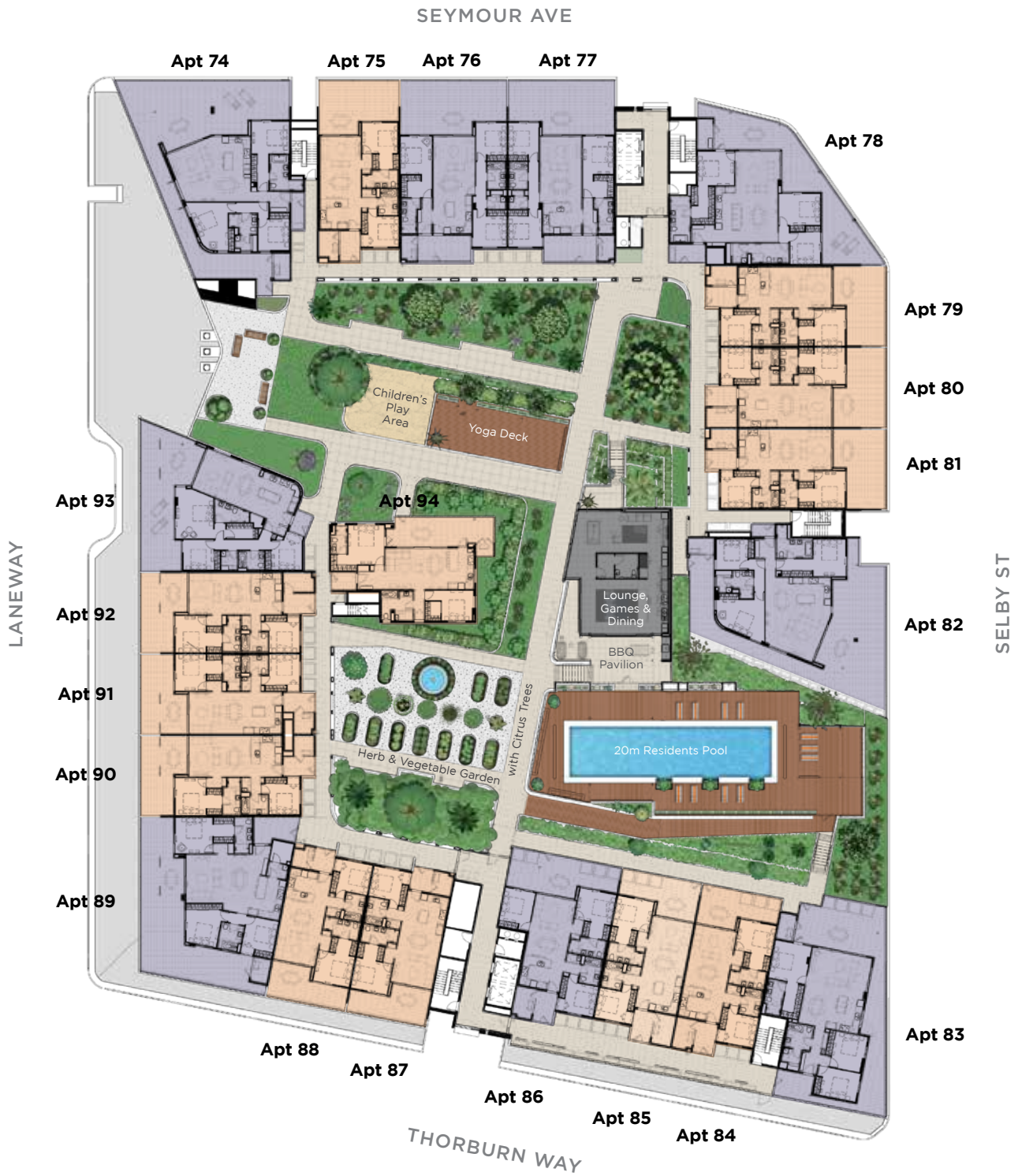


Level 2

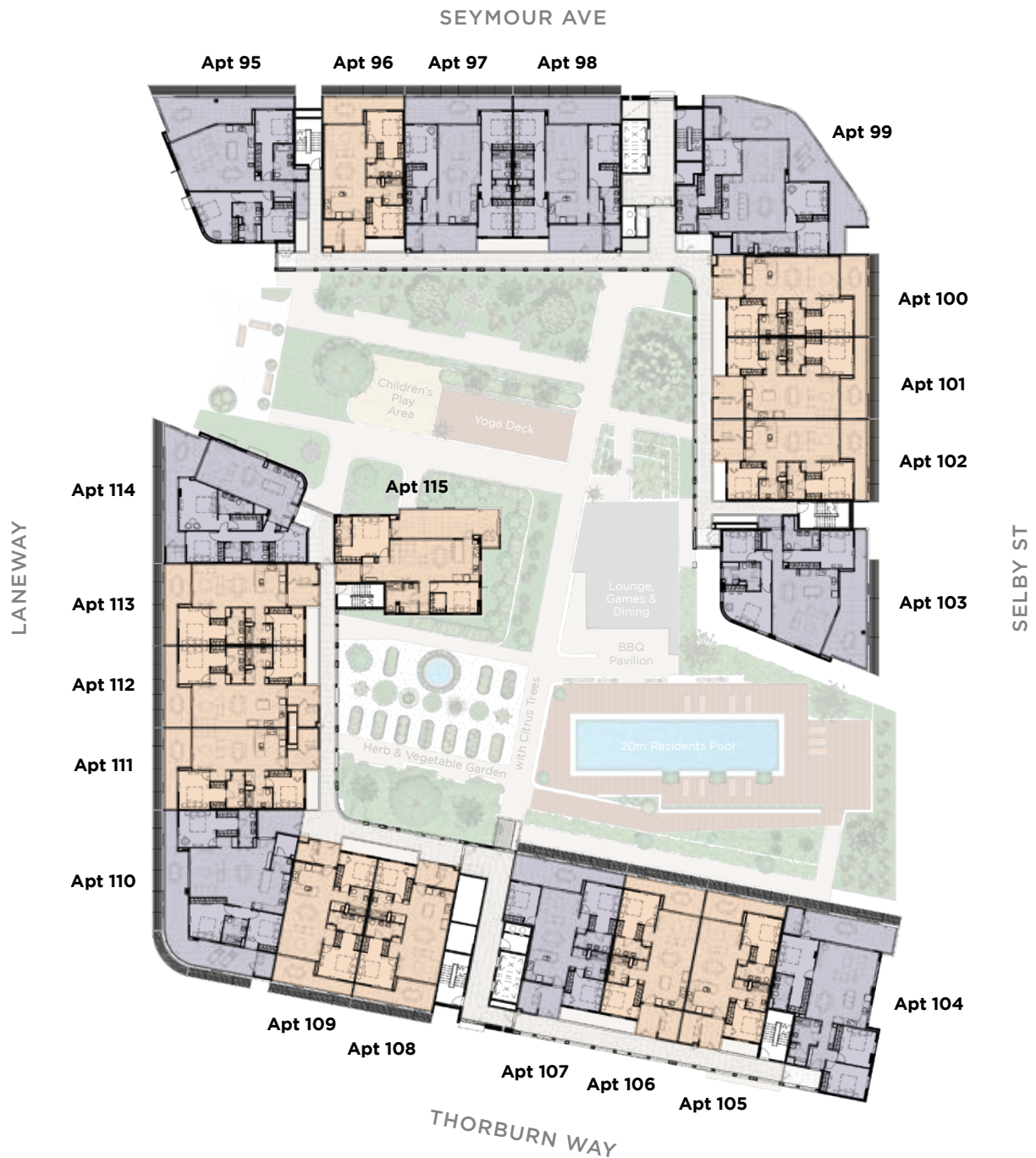


All areas shown are measured Architectural Areas. Dimensions and areas are approximate and are subject to change without notice. Architectural Areas may differ from the areas shown on the Strata Plan. Buyers should refer to the definition of Architectural Areas in Annexure F of the Contract of Sale and to the proposed Strata Plan for their specific apartment in Annexure J of the Contract of Sale. Variations in design can occur in order to comply with the dictates of good construction practice. All the finishes, fixtures, electrical services and facilities illustrated or referred to are subject to availability and may vary. Loose furniture, white goods and planters are not included. Prospective purchasers must rely on their own enquiries and should refer to the Conditions and all annexures contained in the Contract of Sale.

Level 3



Level 4



All areas shown are measured Architectural Areas. Dimensions and areas are approximate and are subject to change without notice. Architectural Areas may differ from the areas shown on the Strata Plan. Buyers should refer to the definition of Architectural Areas in Annexure F of the Contract of Sale and to the proposed Strata Plan for their specific apartment in Annexure J of the Contract of Sale. Variations in design can occur in order to comply with the dictates of good construction practice. All the finishes, fixtures, electrical services and facilities illustrated or referred to are subject to availability and may vary. Loose furniture, white goods and planters are not included. Prospective purchasers must rely on their own enquiries and should refer to the Conditions and all annexures contained in the Contract of Sale.

Level 5



Level 6



All areas shown are measured Architectural Areas. Dimensions and areas are approximate and are subject to change without notice. Architectural Areas may differ from the areas shown on the Strata Plan. Buyers should refer to the definition of Architectural Areas in Annexure F of the Contract of Sale and to the proposed Strata Plan for their specific apartment in Annexure J of the Contract of Sale. Variations in design can occur in order to comply with the dictates of good construction practice. All the finishes, fixtures, electrical services and facilities illustrated or referred to are subject to availability and may vary. Loose furniture, white goods and planters are not included. Prospective purchasers must rely on their own enquiries and should refer to the Conditions and all annexures contained in the Contract of Sale.





