



Much more than you'd expect.

Stylish one bedroom apartments
and loft-style townhouses
to make your own.

1
BEDROOM

**Shenton
Quarter.**

Welcome to a new level of luxury and convenience.

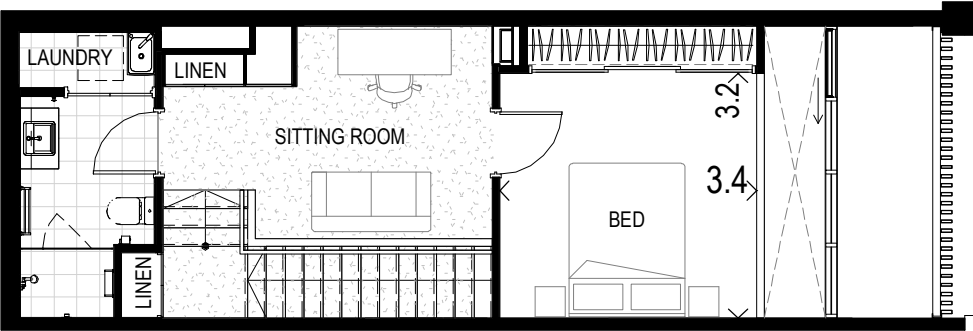
- Spacious high ceilings
- 100% wool carpets
- Double-glazed windows
- Stone benchtops
- Smeg oven, cooktop, rangehood and Omega dishwasher
- Built-in pantry, drawers and bin
- Energy efficient LED lighting
- Pay TV and internet ready
- 4 electric vehicle charging points in residential carpark area



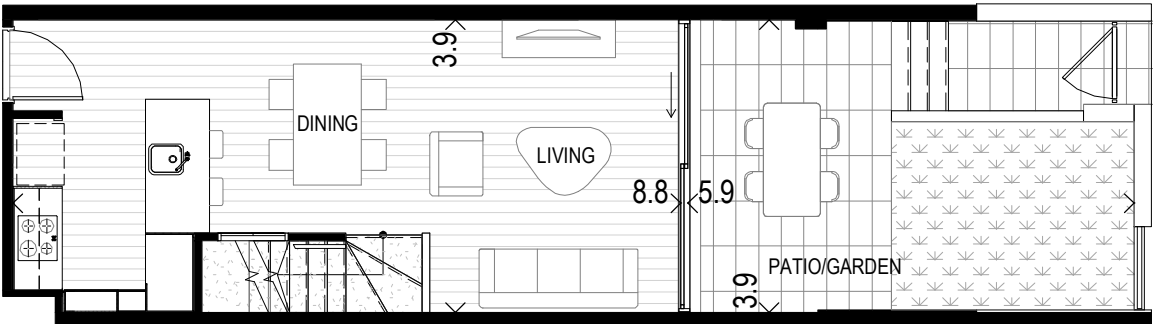
Exclusive and secure carpark entry for residents and their visitors from Thorburn Way



Apartment Type 1A.1



Ground

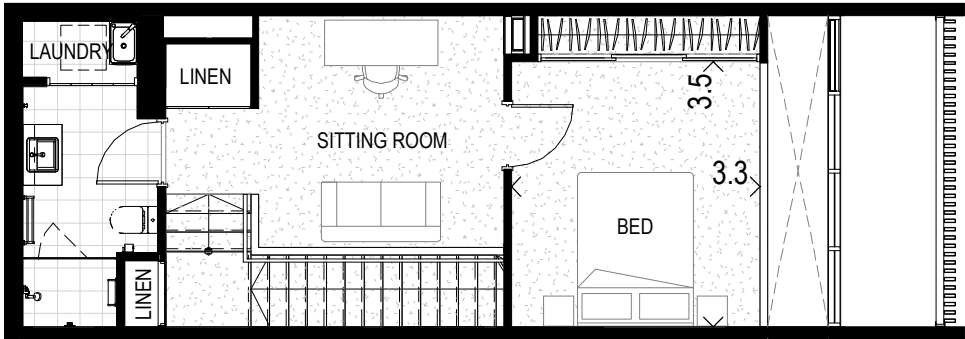


Lower Ground

Apt #	Level	Aspect	Internal	Terrace	Store	Car Bay	Car Bay	Total
5	Lower Ground	East	77m ²	24m ²	4m ²	13m ²	1	118m ²
6	Lower Ground	East	76m ²	24m ²	4m ²	13m ²	1	117m ²
7	Lower Ground	East	76m ²	24m ²	4m ²	13m ²	1	117m ²
8	Lower Ground	East	76m ²	25m ²	4m ²	13m ²	1	118m ²



Apartment Type 1A.2



Mezzanine



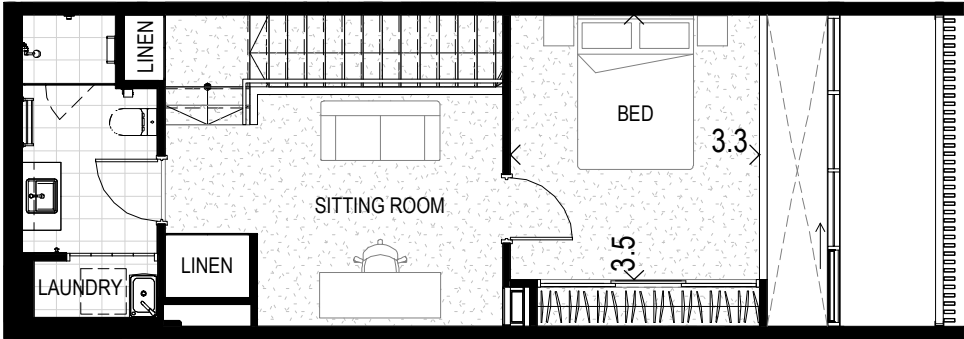
Ground

Apt #	Level	Aspect	Internal	Terrace	Store	Car Bay	Car Bay	Total
9	Ground	East	83m ²	25m ²	5m ²	13m ²	1	126m ²



All areas shown are measured Architectural Areas. Dimensions and areas are approximate and are subject to change without notice. Architectural Areas may differ from the areas shown on the Strata Plan. Buyers should refer to the definition of Architectural Areas in Annexure F of the Contract of Sale and to the proposed Strata Plan for their specific apartment in Annexure J of the Contract of Sale. Variations in design can occur in order to comply with the dictates of good construction practice. All the finishes, fixtures, electrical services and facilities illustrated or referred to are subject to availability and may vary. Loose furniture, white goods and planters are not included. Prospective purchasers must rely on their own enquiries and should refer to the Conditions and all annexures contained in the Contract of Sale.

Apartment Type 1A.3



Mezzanine

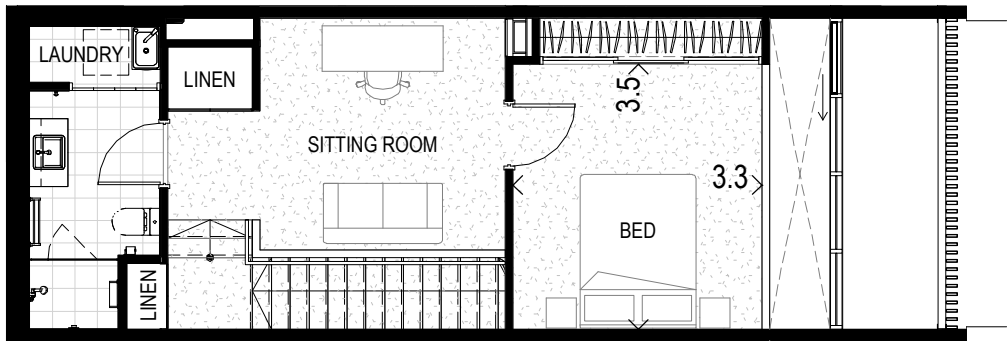


Ground

Apt #	Level	Aspect	Internal	Terrace	Store	Car Bay	Car Bay	Total
10	Ground	East	81m ²	25m ²	5m ²	13m ²	1	124m ²



Apartment Type 1A.4



Mezzanine



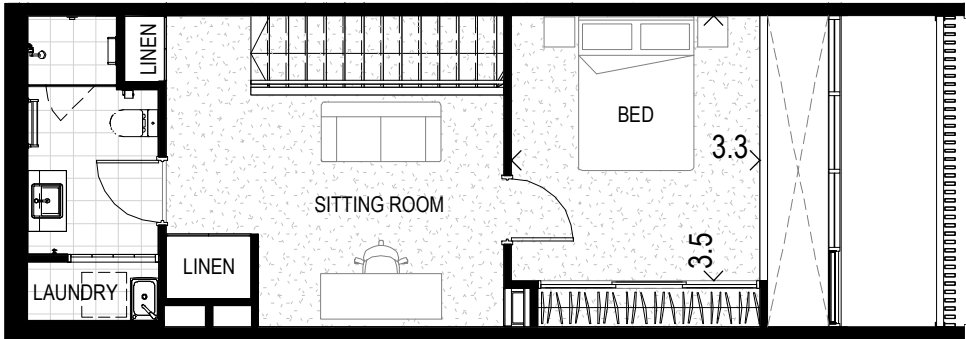
Ground

Apt #	Level	Aspect	Internal	Terrace	Store	Car Bay	Car Bay	Total
11	Ground	East	81m ²	25m ²	5m ²	13m ²	1	124m ²

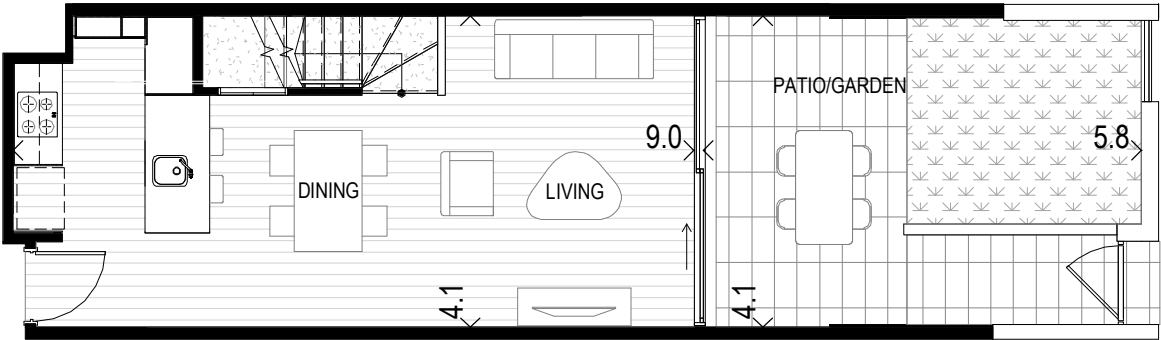


All areas shown are measured Architectural Areas. Dimensions and areas are approximate and are subject to change without notice. Architectural Areas may differ from the areas shown on the Strata Plan. Buyers should refer to the definition of Architectural Areas in Annexure F of the Contract of Sale and to the proposed Strata Plan for their specific apartment in Annexure J of the Contract of Sale. Variations in design can occur in order to comply with the dictates of good construction practice. All the finishes, fixtures, electrical services and facilities illustrated or referred to are subject to availability and may vary. Loose furniture, white goods and planters are not included. Prospective purchasers must rely on their own enquiries and should refer to the Conditions and all annexures contained in the Contract of Sale.

Apartment Type 1A.5



Mezzanine

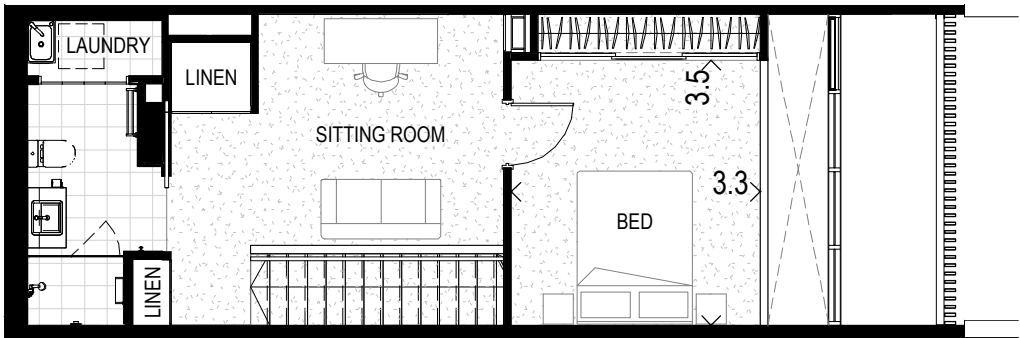


Ground

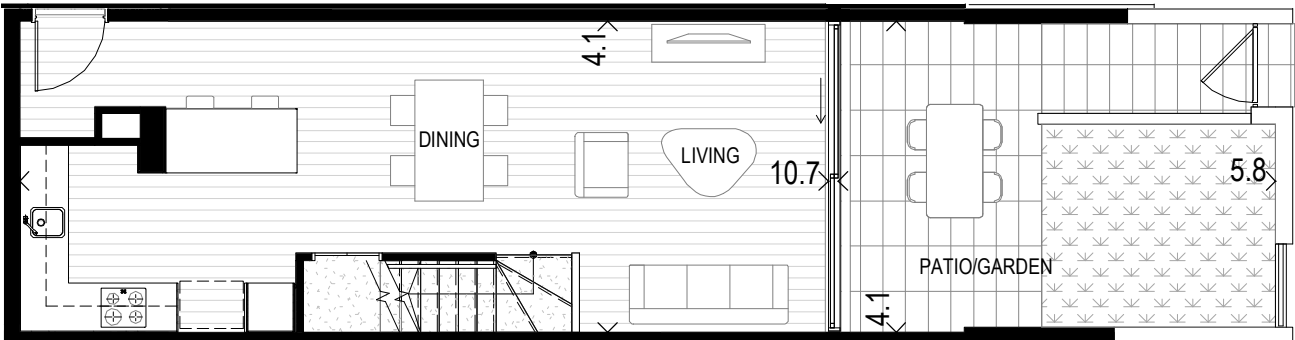
Apt #	Level	Aspect	Internal	Terrace	Store	Car Bay	Car Bay	Total
12	Ground	East	81m ²	25m ²	5m ²	13m ²	1	124m ²



Apartment Type 1A.6

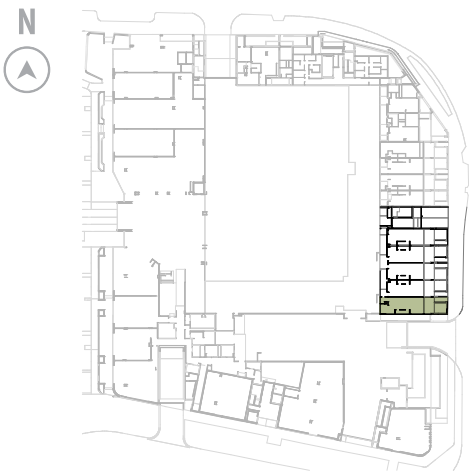


Mezzanine



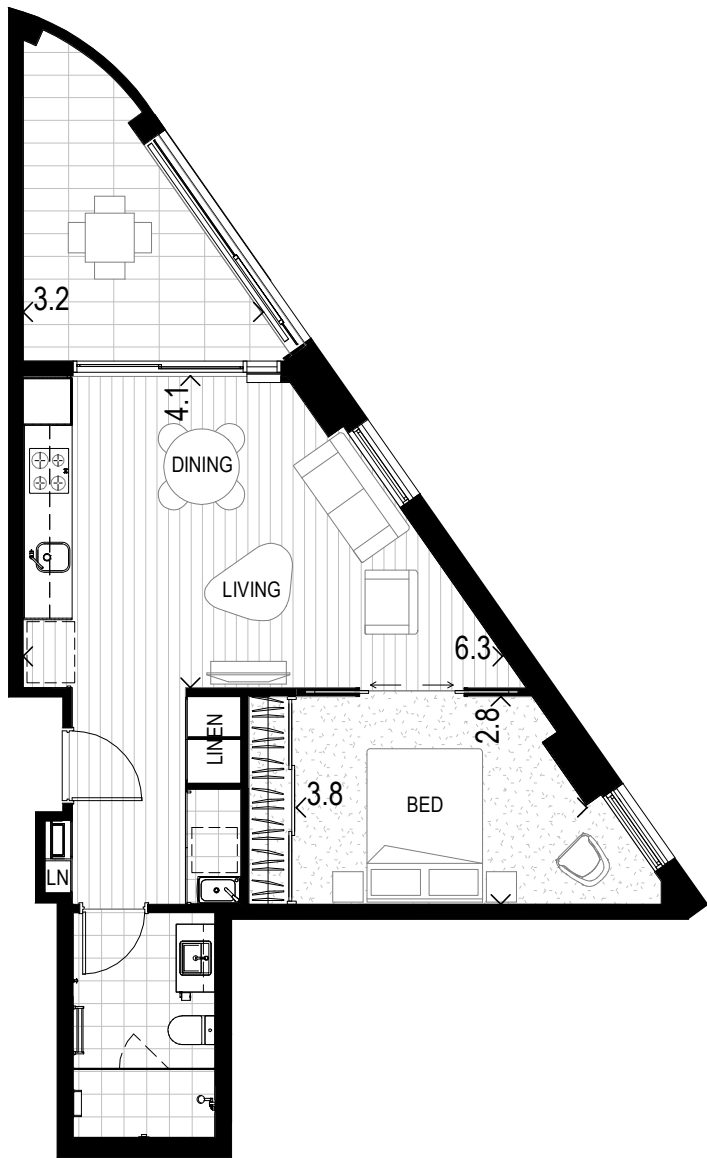
Ground

Apt #	Level	Aspect	Internal	Terrace	Store	Car Bay	Car Bay	Total
13	Ground	East	90m ²	25m ²	5m ²	13m ²	1	133m ²



All areas shown are measured Architectural Areas. Dimensions and areas are approximate and are subject to change without notice. Architectural Areas may differ from the areas shown on the Strata Plan. Buyers should refer to the definition of Architectural Areas in Annexure F of the Contract of Sale and to the proposed Strata Plan for their specific apartment in Annexure J of the Contract of Sale. Variations in design can occur in order to comply with the dictates of good construction practice. All the finishes, fixtures, electrical services and facilities illustrated or referred to are subject to availability and may vary. Loose furniture, white goods and planters are not included. Prospective purchasers must rely on their own enquiries and should refer to the Conditions and all annexures contained in the Contract of Sale.

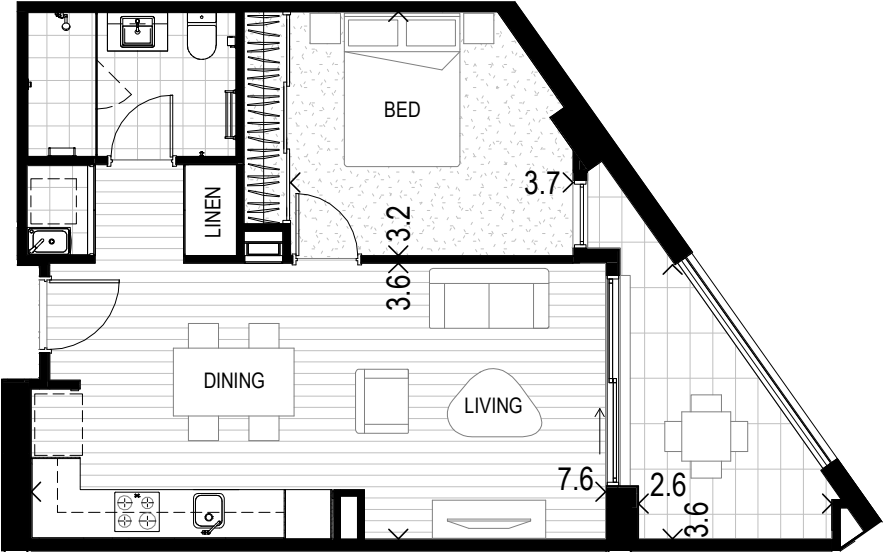
Apartment Type 1B



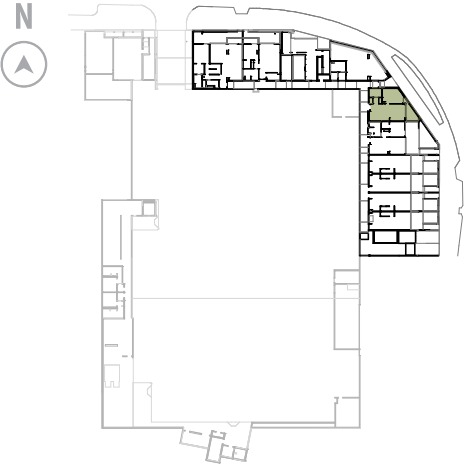
Apt #	Level	Aspect	Internal	Balcony	Store	Car Bay	Car Bay	Total
20	Mezzanine	North East	55m ²	10m ²	5m ²	13m ²	1	83m ²



Apartment Type 1C

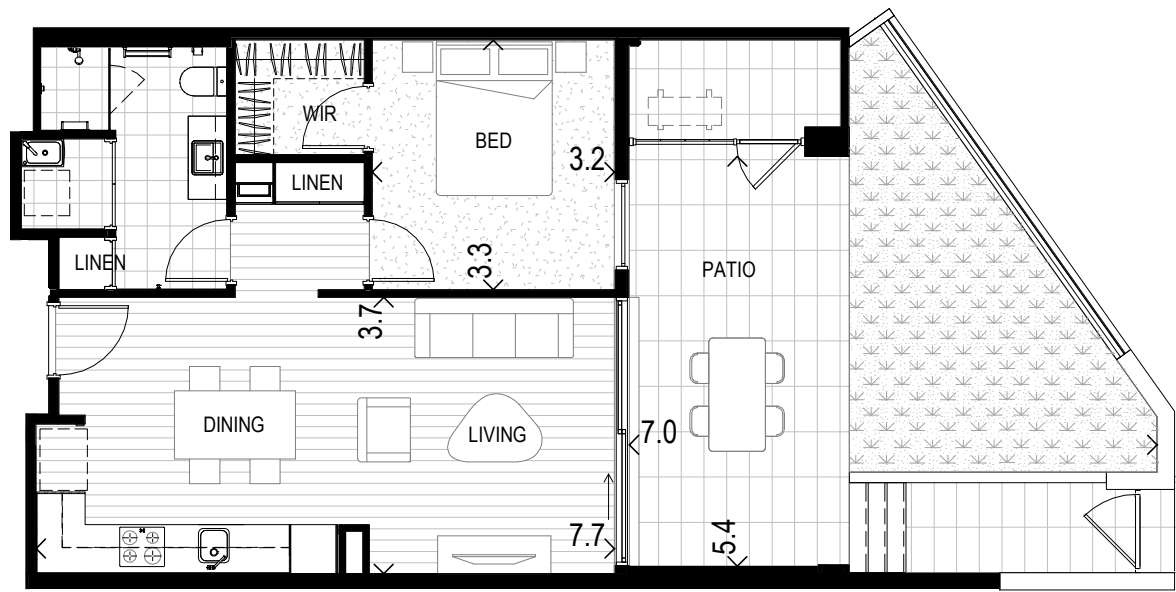


Apt #	Level	Aspect	Internal	Terrace	Store	Car Bay	Car Bay	Total
3	Lower Ground	East	56m ²	9m ²	4m ²	13m ²	1	82m ²

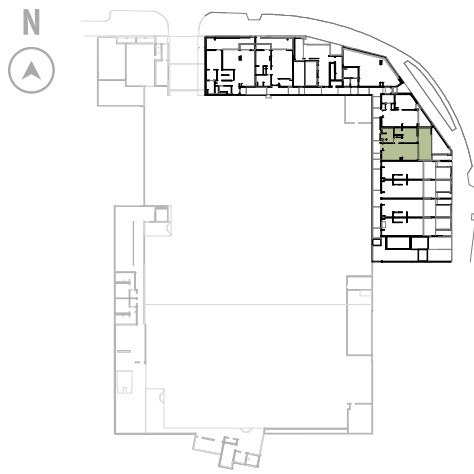


All areas shown are measured Architectural Areas. Dimensions and areas are approximate and are subject to change without notice. Architectural Areas may differ from the areas shown on the Strata Plan. Buyers should refer to the definition of Architectural Areas in Annexure F of the Contract of Sale and to the proposed Strata Plan for their specific apartment in Annexure J of the Contract of Sale. Variations in design can occur in order to comply with the dictates of good construction practice. All the finishes, fixtures, electrical services and facilities illustrated or referred to are subject to availability and may vary. Loose furniture, white goods and planters are not included. Prospective purchasers must rely on their own enquiries and should refer to the Conditions and all annexures contained in the Contract of Sale.

Apartment Type 1D



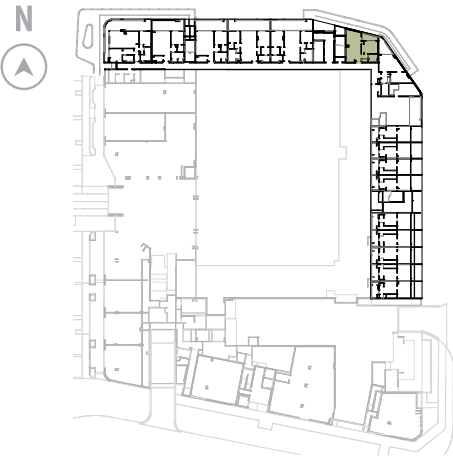
Apt #	Level	Aspect	Internal	Terrace	Store	Car Bay	Car Bay	Total
4	Lower Ground	East	57m ²	39m ²	3m ²	13m ²	1	112m ²



Apartment Type 1E

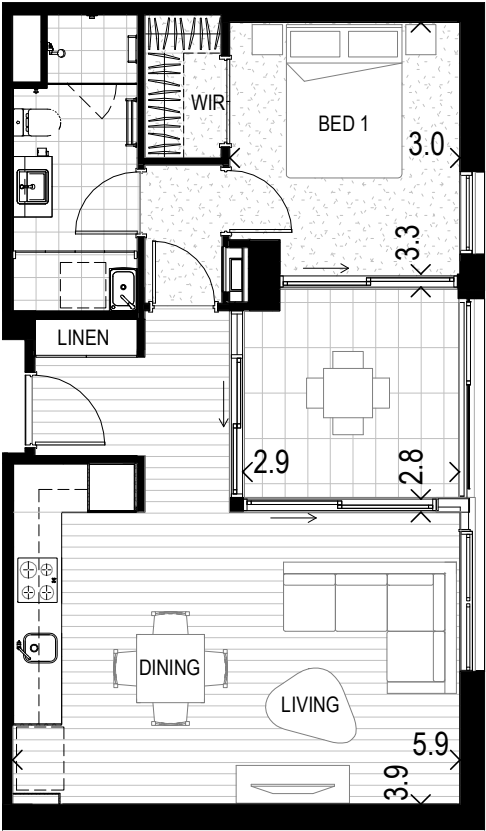


Apt #	Level	Aspect	Internal	Balcony	Store	Car Bay	Car Bay	Total
19	Mezzanine	North	56m ²	6m ²	5m ²	13m ²	1	80m ²
26	Level 1	North	56m ²	6m ²	4m ²	13m ²	1	79m ²
52	Level 2	North	56m ²	6m ²	5m ²	13m ²	1	80m ²

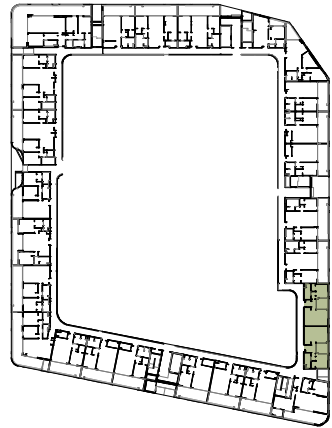


All areas shown are measured Architectural Areas. Dimensions and areas are approximate and are subject to change without notice. Architectural Areas may differ from the areas shown on the Strata Plan. Buyers should refer to the definition of Architectural Areas in Annexure F of the Contract of Sale and to the proposed Strata Plan for their specific apartment in Annexure J of the Contract of Sale. Variations in design can occur in order to comply with the dictates of good construction practice. All the finishes, fixtures, electrical services and facilities illustrated or referred to are subject to availability and may vary. Loose furniture, white goods and planters are not included. Prospective purchasers must rely on their own enquiries and should refer to the Conditions and all annexures contained in the Contract of Sale.

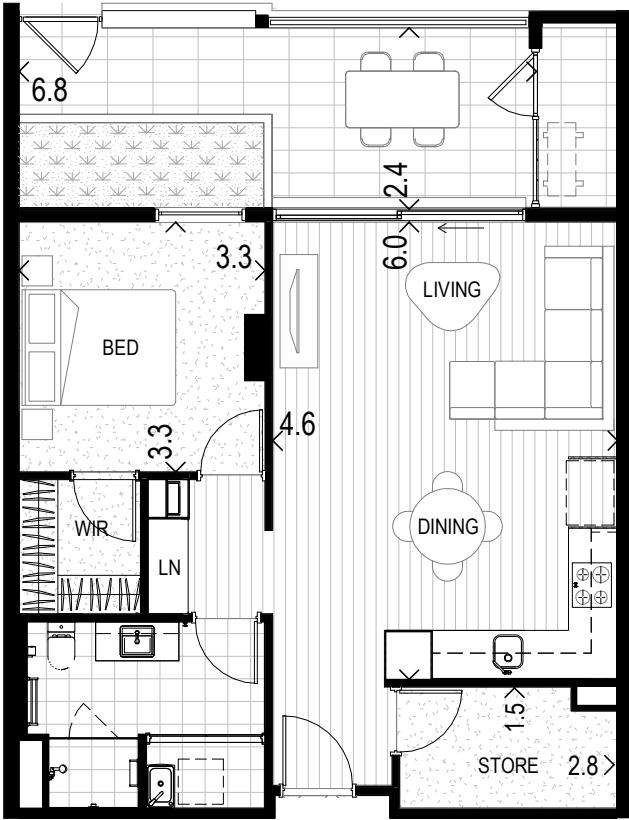
Apartment Type 1F



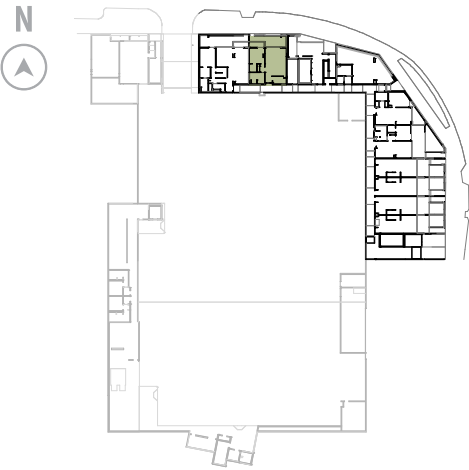
Apt #	Level	Aspect	Internal	Balcony	Store	Car Bay	Car Bay	Total
33	Level 1	East	58m ²	9m ²	5m ²	13m ²	1	85m ²
34	Level 1	East	59m ²	9m ²	5m ²	13m ²	1	86m ²



Apartment Type 1G.1

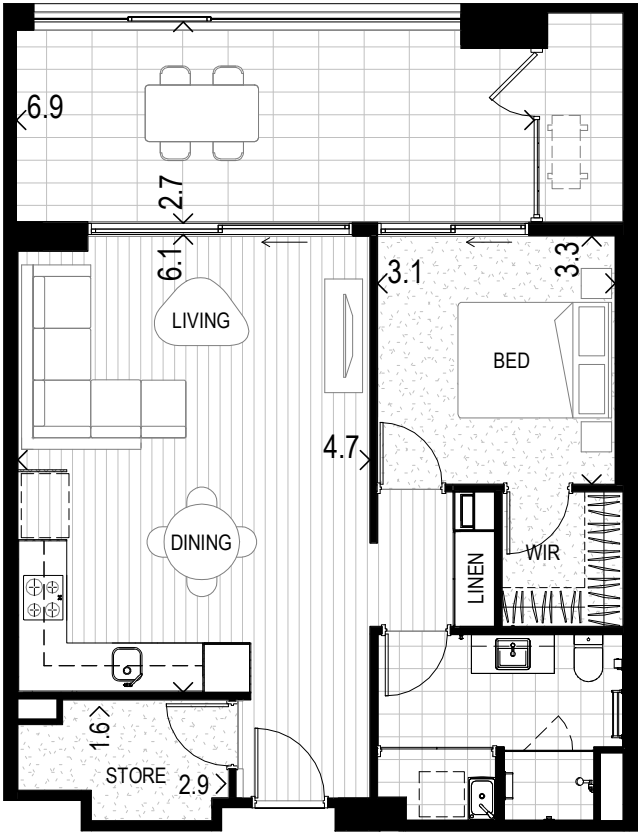


Apt #	Level	Aspect	Internal	Terrace	Store	Car Bay	Car Bay	Total
2	Lower Ground	North	65m ²	18m ²	2m ²	13m ²	1	98m ²

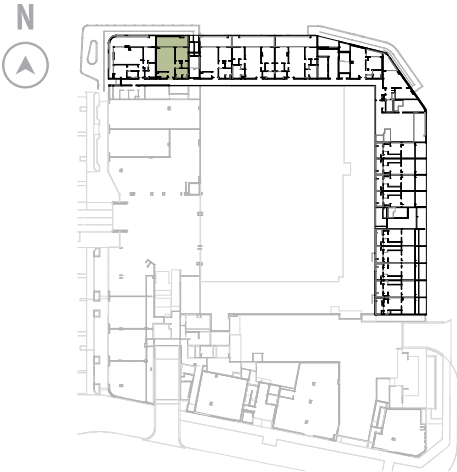


All areas shown are measured Architectural Areas. Dimensions and areas are approximate and are subject to change without notice. Architectural Areas may differ from the areas shown on the Strata Plan. Buyers should refer to the definition of Architectural Areas in Annexure F of the Contract of Sale and to the proposed Strata Plan for their specific apartment in Annexure J of the Contract of Sale. Variations in design can occur in order to comply with the dictates of good construction practice. All the finishes, fixtures, electrical services and facilities illustrated or referred to are subject to availability and may vary. Loose furniture, white goods and planters are not included. Prospective purchasers must rely on their own enquiries and should refer to the Conditions and all annexures contained in the Contract of Sale.

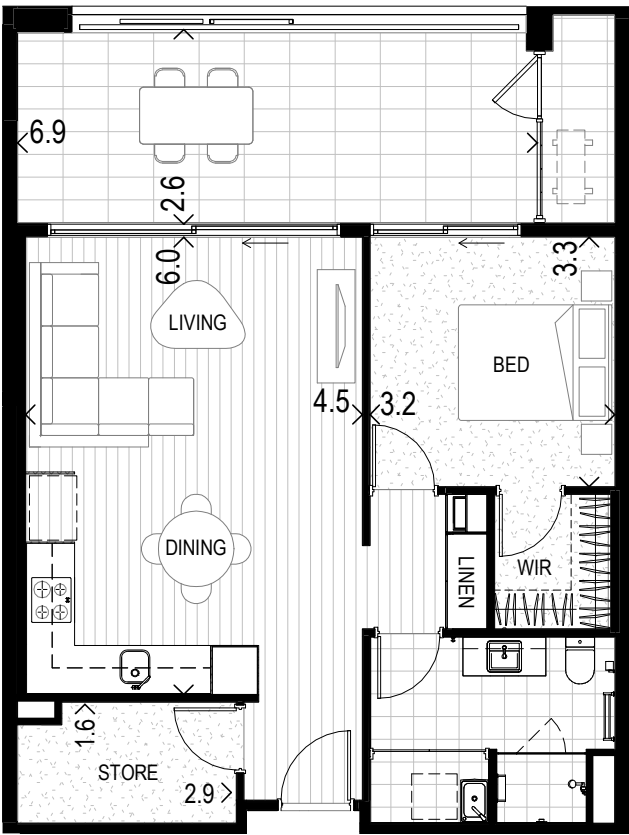
Apartment Type 1G.2



Apt #	Level	Aspect	Internal	Balcony	Store	Car Bay	Car Bay	Total
15	Mezzanine	North	65m ²	20m ²	3m ²	13m ²	1	101m ²



Apartment Type 1G.3

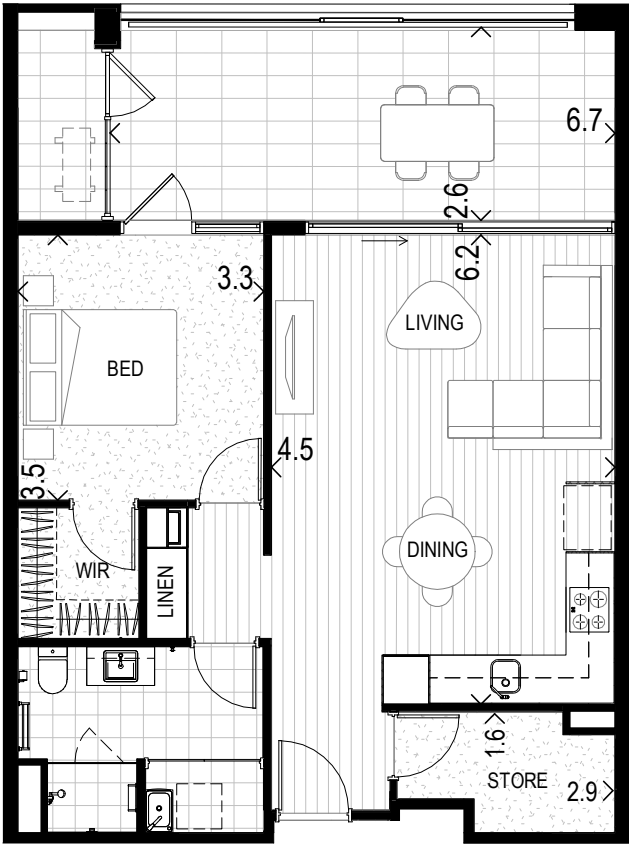


Apt #	Level	Aspect	Internal	Balcony	Store	Car Bay	Car Bay	Total
16	Mezzanine	North	64m ²	20m ²	2m ²	13m ²	1	99m ²
23	Level 1	North	64m ²	20m ²	2m ²	13m ²	1	99m ²
49	Level 2	North	64m ²	20m ²	2m ²	13m ²	1	99m ²

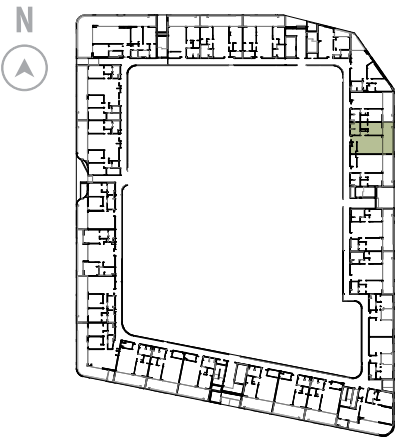


All areas shown are measured Architectural Areas. Dimensions and areas are approximate and are subject to change without notice. Architectural Areas may differ from the areas shown on the Strata Plan. Buyers should refer to the definition of Architectural Areas in Annexure F of the Contract of Sale and to the proposed Strata Plan for their specific apartment in Annexure J of the Contract of Sale. Variations in design can occur in order to comply with the dictates of good construction practice. All the finishes, fixtures, electrical services and facilities illustrated or referred to are subject to availability and may vary. Loose furniture, white goods and planters are not included. Prospective purchasers must rely on their own enquiries and should refer to the Conditions and all annexures contained in the Contract of Sale.

Apartment Type 1G.4



Apt #	Level	Aspect	Internal	Balcony	Store	Car Bay	Car Bay	Total
29	Level 1	East	66m ²	19m ²	3m ²	13m ²	1	101m ²
30	Level 1	East	66m ²	19m ²	3m ²	13m ²	1	101m ²
55	Level 2	East	66m ²	19m ²	3m ²	13m ²	1	101m ²
56	Level 2	East	66m ²	19m ²	3m ²	13m ²	1	101m ²



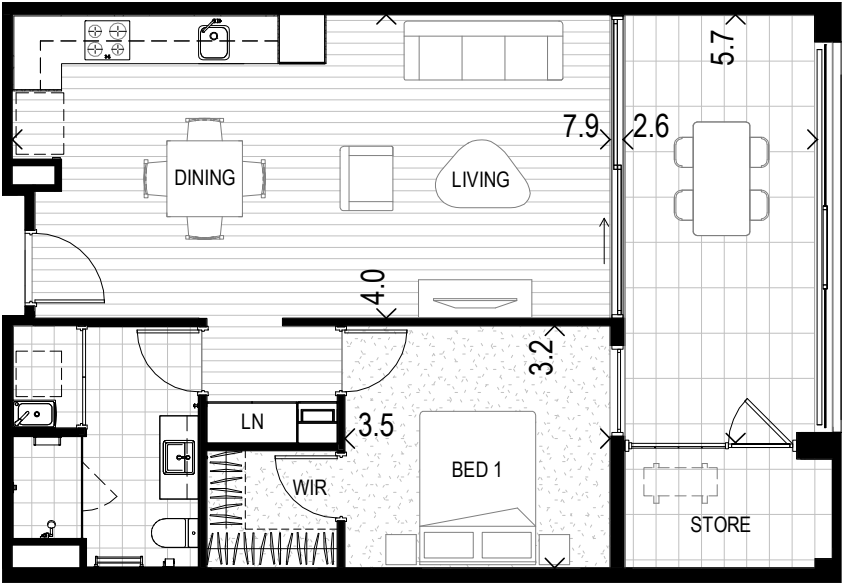
Apartment Type 1G.5



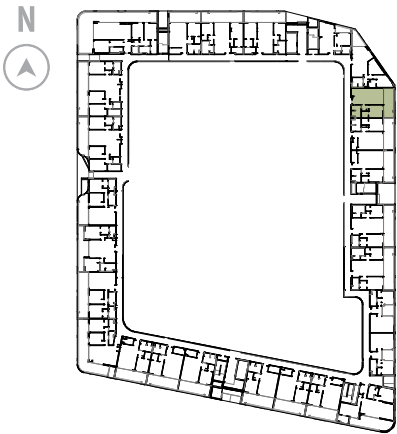
Apt #	Level	Aspect	Internal	Balcony	Store	Car Bay	Car Bay	Total
36	Level 1	South	64m ²	21m ²	3m ²	13m ²	1	101m ²
37	Level 1	South	63m ²	21m ²	3m ²	13m ²	1	100m ²
38	Level 1	South	63m ²	21m ²	3m ²	13m ²	1	100m ²
39	Level 1	South	63m ²	20m ²	3m ²	13m ²	1	99m ²
40	Level 1	South	63m ²	20m ²	3m ²	13m ²	1	99m ²
41	Level 1	South	63m ²	20m ²	3m ²	13m ²	1	99m ²
62	Level 2	South	64m ²	21m ²	3m ²	13m ²	1	101m ²
63	Level 2	South	63m ²	21m ²	3m ²	13m ²	1	100m ²
64	Level 2	South	63m ²	21m ²	3m ²	13m ²	1	100m ²
65	Level 2	South	63m ²	20m ²	3m ²	13m ²	1	99m ²
66	Level 2	South	63m ²	20m ²	3m ²	13m ²	1	99m ²
67	Level 2	South	63m ²	20m ²	3m ²	13m ²	1	99m ²

All areas shown are measured Architectural Areas. Dimensions and areas are approximate and are subject to change without notice. Architectural Areas may differ from the areas shown on the Strata Plan. Buyers should refer to the definition of Architectural Areas in Annexure F of the Contract of Sale and to the proposed Strata Plan for their specific apartment in Annexure J of the Contract of Sale. Variations in design can occur in order to comply with the dictates of good construction practice. All the finishes, fixtures, electrical services and facilities illustrated or referred to are subject to availability and may vary. Loose furniture, white goods and planters are not included. Prospective purchasers must rely on their own enquiries and should refer to the Conditions and all annexures contained in the Contract of Sale.

Apartment Type 1H



Apt #	Level	Aspect	Internal	Balcony	Store	Car Bay	Car Bay	Total
28	Level 1	East	61m ²	16m ²	4m ²	13m ²	1	94m ²
54	Level 2	East	61m ²	16m ²	4m ²	13m ²	1	94m ²



Colour Schemes



Scheme A, Acacia



Scheme B, Banksia



Scheme C, Cassia

Artist impression, kitchen and bathroom renders for 3 bedroom apartments only. Please refer to specifications for 1 bedroom finishes.



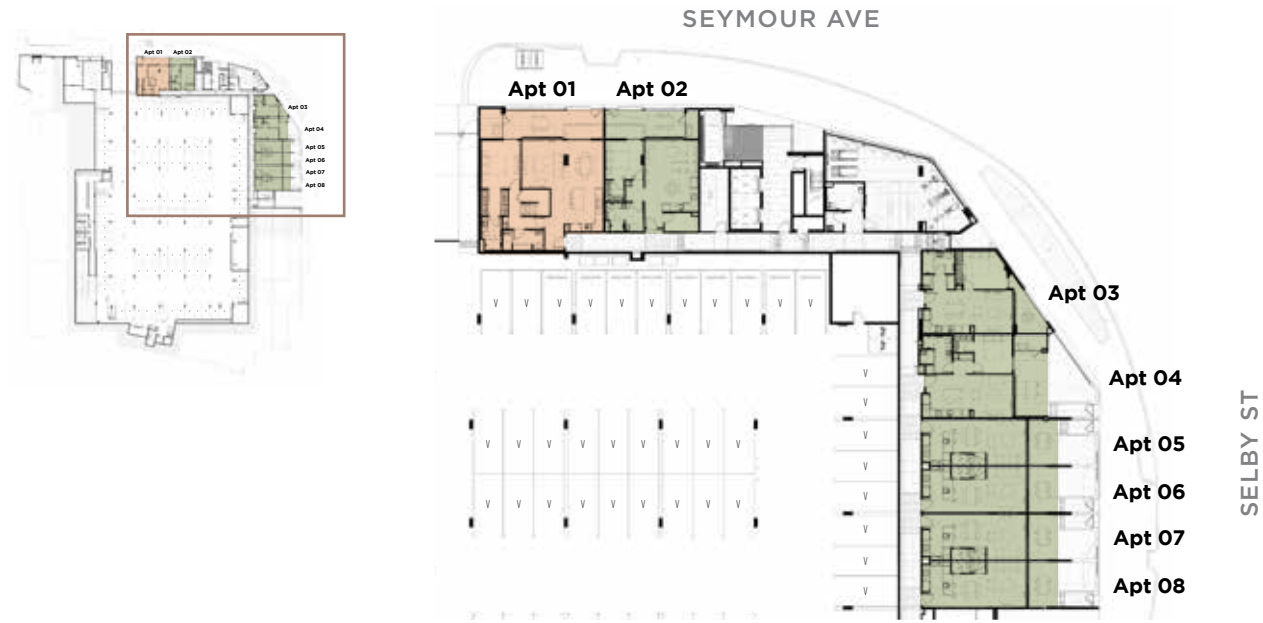
Specifications

ONE BEDROOM, ONE BATHROOM APARTMENTS
ONE BEDROOM, ONE BATHROOM LOFT-STYLE TOWNHOUSES

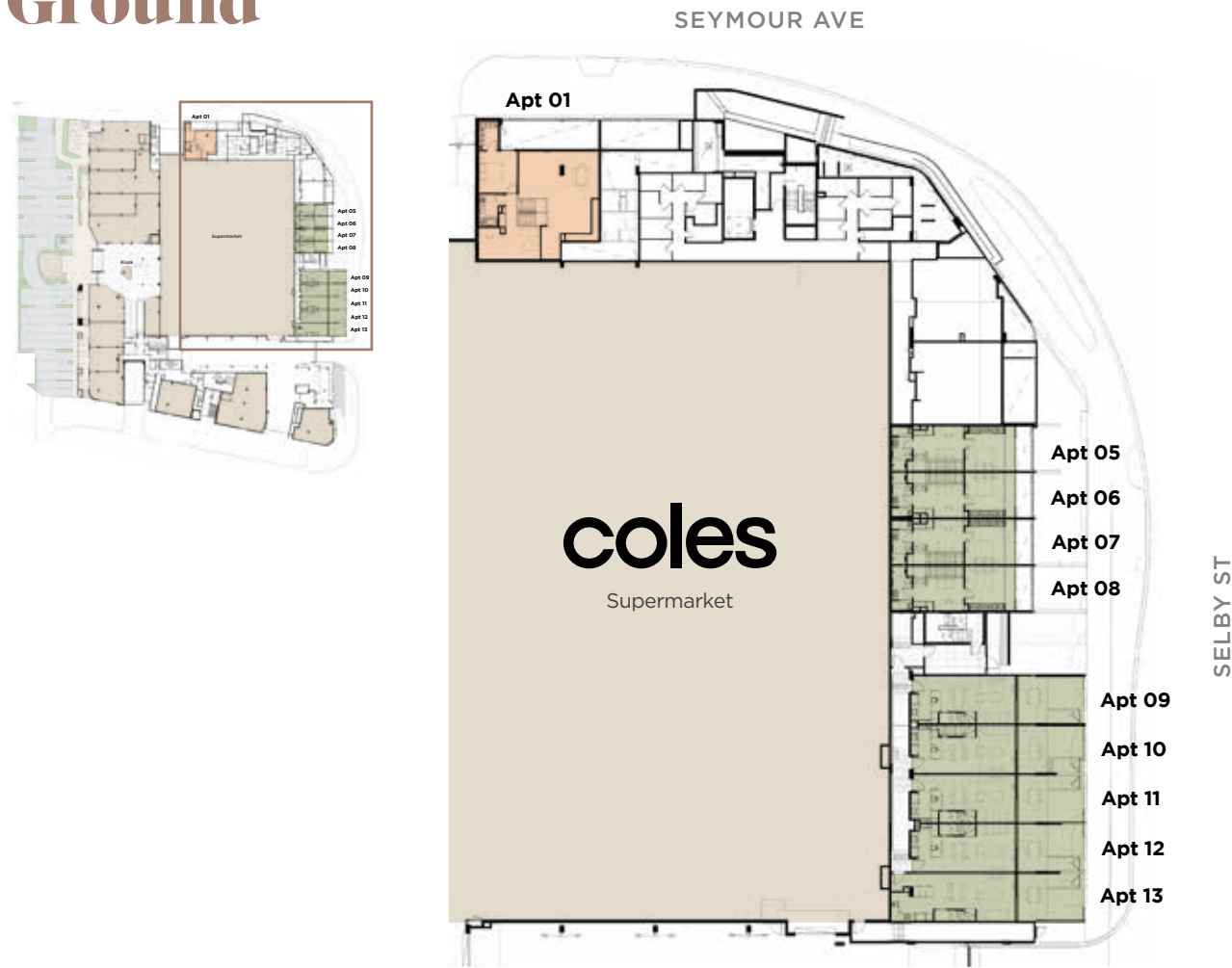
Location	Description
GENERAL FINISHES	
Internal Walls Generally	Paint finish.
Ceilings	Generally, 2700mm high in living room and bedrooms with localised bulkheads. Apartments 3 and 4 have 4500mm or higher ceiling to living room and 3300mm to bedroom. Townhouses have varying ceiling heights to ground floor living, all greater than 2800mm. Apartment 33 and 34 have 2600mm high ceilings in living and bedrooms.
Front Door (to apartment)	Flush panelled with selected hardware. Paint finish.
Internal Doors	Flush panelled doors with selected hardware. Paint finish.
Entry Door Furniture	Chrome finish.
Internal Door Furniture	Chrome finish.
Floors to Kitchen, Living and Dining	Composite prefinished laminate flooring, on acoustic membrane to comply with applicable National Construction Code.
Floors to Bedroom and Upstairs Living	100% wool carpet laid on underlay as selected by interior designer.
Skirtings	Paint finish.
External Window / Door Framing System	Powder coated aluminium framed double-glazed system to Australian Standards.
Flyscreens	Flyscreens to all awning windows and external sliding doors.
KITCHEN	
Joinery Cupboards	Laminate finish with soft closers as selected by interior designer.
Bench Tops	Reconstituted stone as selected by interior designer.
Splashback	Reconstituted stone as selected by interior designer.
Sink	Undermount stainless steel single bowl sink.
Sink Mixer Tap	Chrome finish 'goose neck' spout as selected by interior designer.
Pantry	Built-in pantry provided with microwave recess.
Drawers	Built-in drawers.
Bin	Built-in bin provided.
Microwave Recess	Recess (only) with power point provided.
Fridge Recess	Recess (only) 880mm wide with water supply and power point provided.
BATHROOM	
Floor	Tiles as selected by interior designer.
Walls	Full height tiling. Tiles as selected by interior designer.
Ceilings	Paint finish.
Shower Screen	Semi frameless glass shower screen.
Shower Mixer	Chrome finish.
Shower	Chrome finish on a rail, with a range of spray patterns.
Basin	Vitreous white china inset basin with chrome waste.
Basin Tapware	Chrome finish.
Toilet Suite	Back to the wall design with dual flush and soft-close seat.
Mirror	Wall mounted cabinet with mirror doors above vanity as selected by interior designer.
Vanity Top	Reconstituted stone as selected by interior designer.
Vanity Cabinet	Laminate finish as selected by interior designer.
Accessories	Chrome finish as selected by interior designer.

Location	Description
LAUNDRY	
Floor	Tile as selected by interior designer.
Walls	Paint finish with tiled skirting.
Trough	Laundry trough with integral cupboard unit underneath.
Mixer Tap	Chrome finish.
Washing Machine Taps	Wall mounted.
APPLIANCES	
Oven	Smeg 60cm electric programmable oven with stainless steel fascia.
Cooktop	Smeg 60cm electric ceramic 4 zone cooktop.
Rangehood	Smeg 60cm built-in extraction rangehood with integral LED lighting.
Dishwasher	Omega 60cm compact dishwasher with stainless steel fascia.
Dryer	Electric clothes dryer provided.
ELECTRICAL	
Lighting	Energy efficient surface mounted LED cannister lights, LED oyster fittings and recessed LED downlights to architectural and electrical engineer layout. Apartments 3 and 4 have pendant fitting to living room, loft-style townhouses have pendant fittings to living room and kitchen island bench as selected by interior designer.
Electrical Outlets	General power and light switches to architects and electrical engineer's layouts.
TV Services	Free to air television outlet provided to living room.
Pay Television	Pay TV ready outlet provided to living room (subscription by resident).
Voice/ Data Communications System	Data/phone outlets provided in living room and study nook (where provided, refer to individual plans), connected to communications hub.
Internet	Internet provision to apartments (subscription by resident).
Home Network	Provision of communications network hub (hardware not included).
BALCONY	
Floor	Tiles as selected by architect.
Balustrade / Courtyard Fence	Street Level: Masonry walls with powder coated aluminium palisade fence with gate.
Mezzanine to Level 2 inclusive	Powder coated aluminium balustrade with sections in masonry.
Balcony Screens (where applicable)	Powder coated sliding screen with design motif by Artist to balconies (excludes street level, refer to individual apartment plans).
OTHER FACILITIES	
Air-conditioning	Wall mounted reverse cycle air-conditioning provided to main living room and bedroom(s). Condenser unit located in balcony enclosure or carpark depending on apartment location. Refer to floor plans for location.
Other Mechanical Services	Bathroom, powder room and separate laundry (where applicable, refer to individual plan) mechanically exhausted.
Fire Services	Fire alarms and smoke detectors are provided as required by the applicable National Construction Code.
Security Intercom and electronic entry to lobby door	Audio-visual intercom system linking entry foyer door at ground floor level to apartment with electronic control entry to lobby door.
Store Room	Store room provided on balcony, in carpark or other ancillary zones.
Keys	2 fobs provided to 1x1 apartments for keyless entry into residents' common areas.
Car Bay	One undercover car bay within secure resident's carpark, refer to strata plan.
Apartment 33 Car Bay Only	Apartment 33 has one undercover car bay with automated bollard located next to residents' visitor carparking area, refer to strata plan.

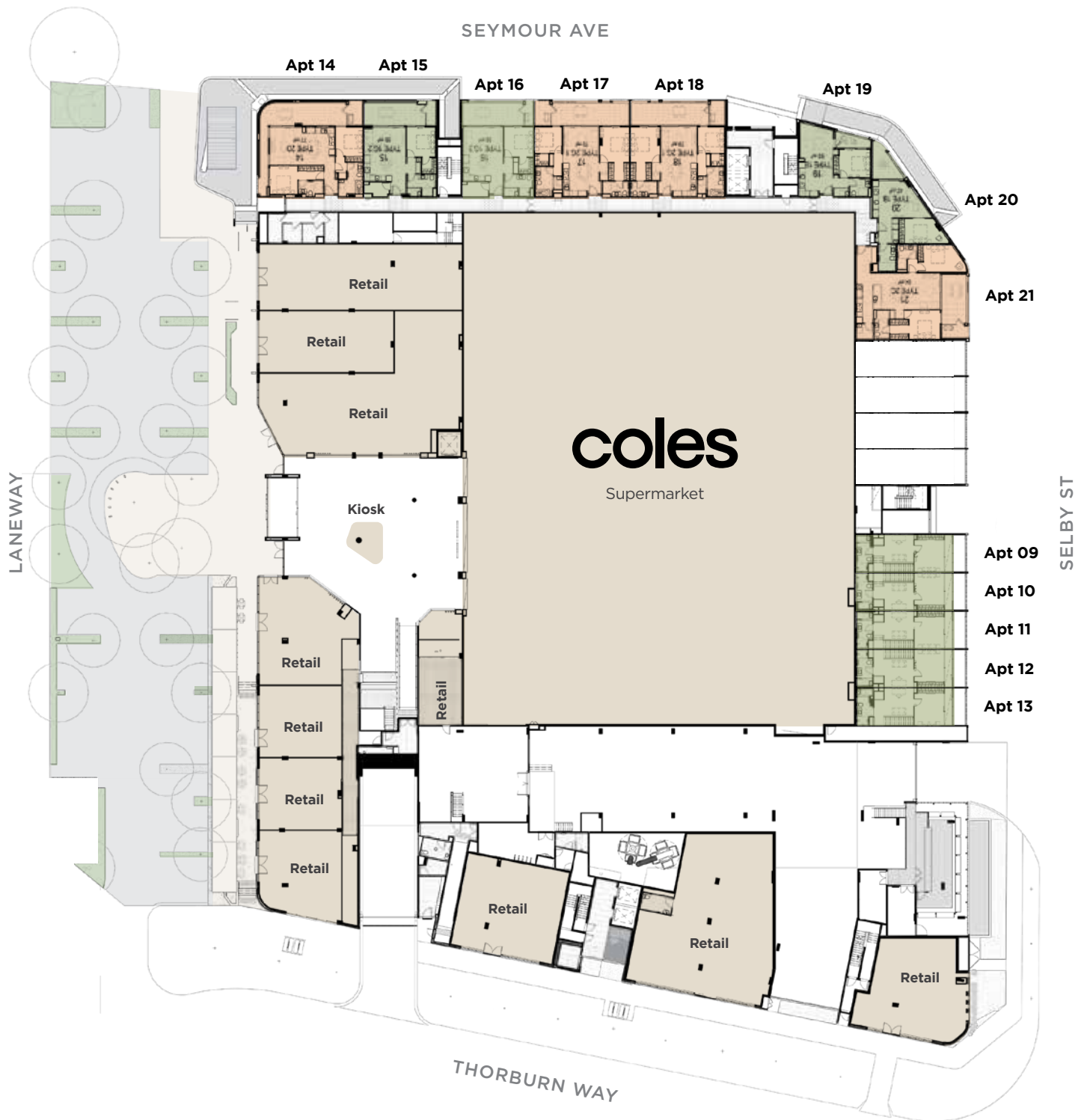
Lower Ground



Ground

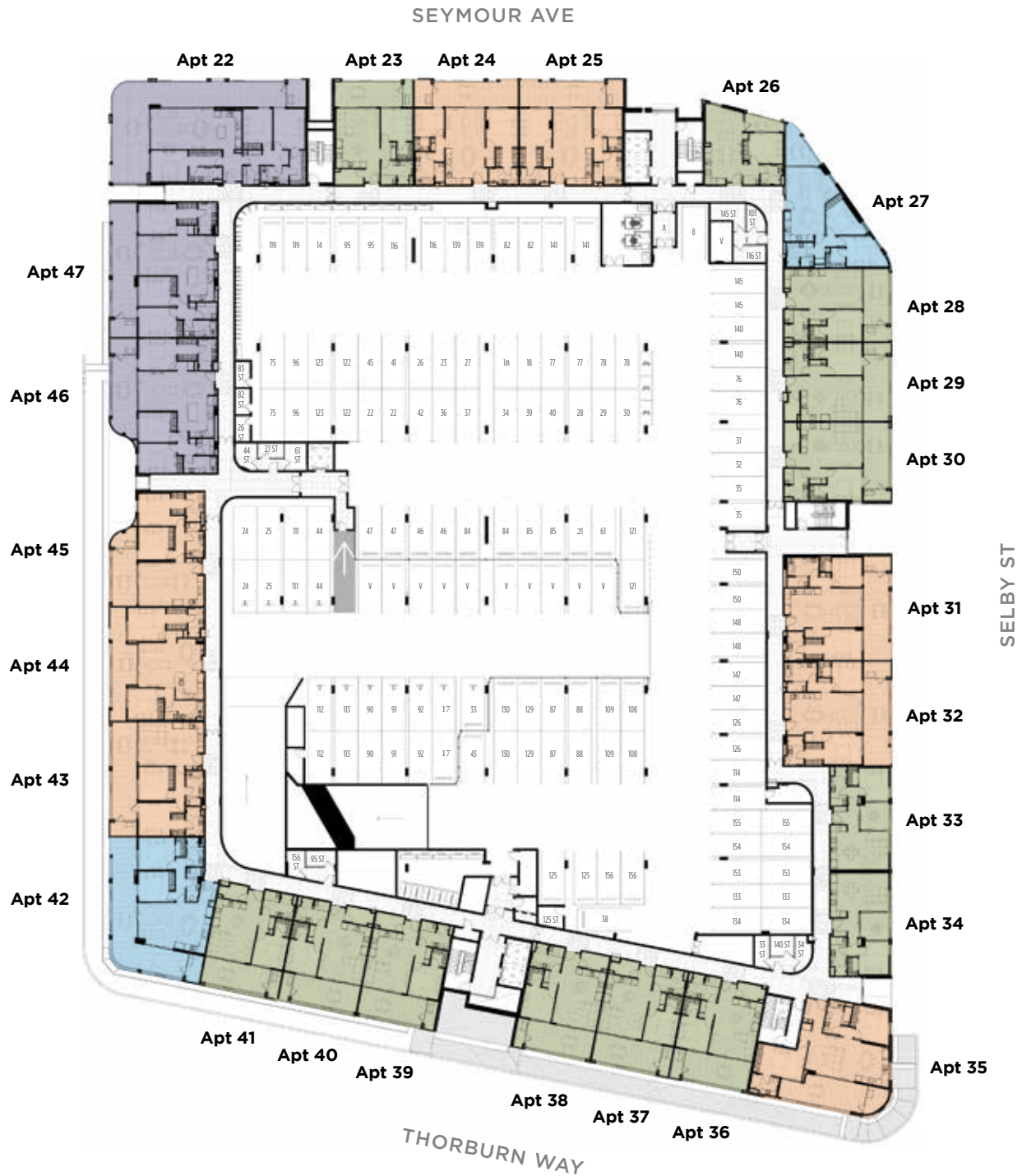


Mezzanine

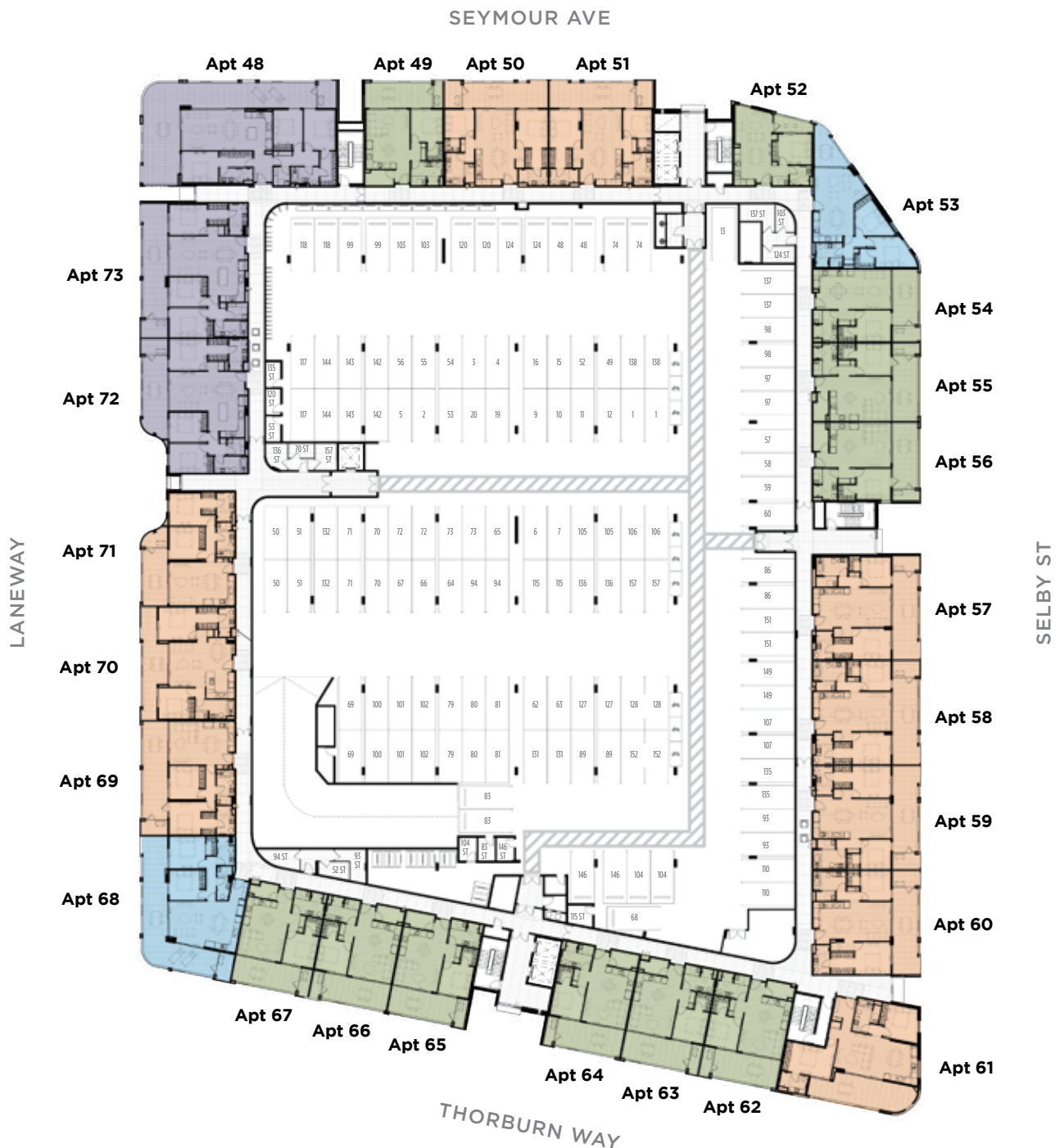


All areas shown are measured Architectural Areas. Dimensions and areas are approximate and are subject to change without notice. Architectural Areas may differ from the areas shown on the Strata Plan. Buyers should refer to the definition of Architectural Areas in Annexure F of the Contract of Sale and to the proposed Strata Plan for their specific apartment in Annexure J of the Contract of Sale. Variations in design can occur in order to comply with the dictates of good construction practice. All the finishes, fixtures, electrical services and facilities illustrated or referred to are subject to availability and may vary. Loose furniture, white goods and planters are not included. Prospective purchasers must rely on their own enquiries and should refer to the Conditions and all annexures contained in the Contract of Sale. The tenancy mix shown is indicative only of the likely retail offering. It is subject to change at the developer's sole discretion.

Level 1

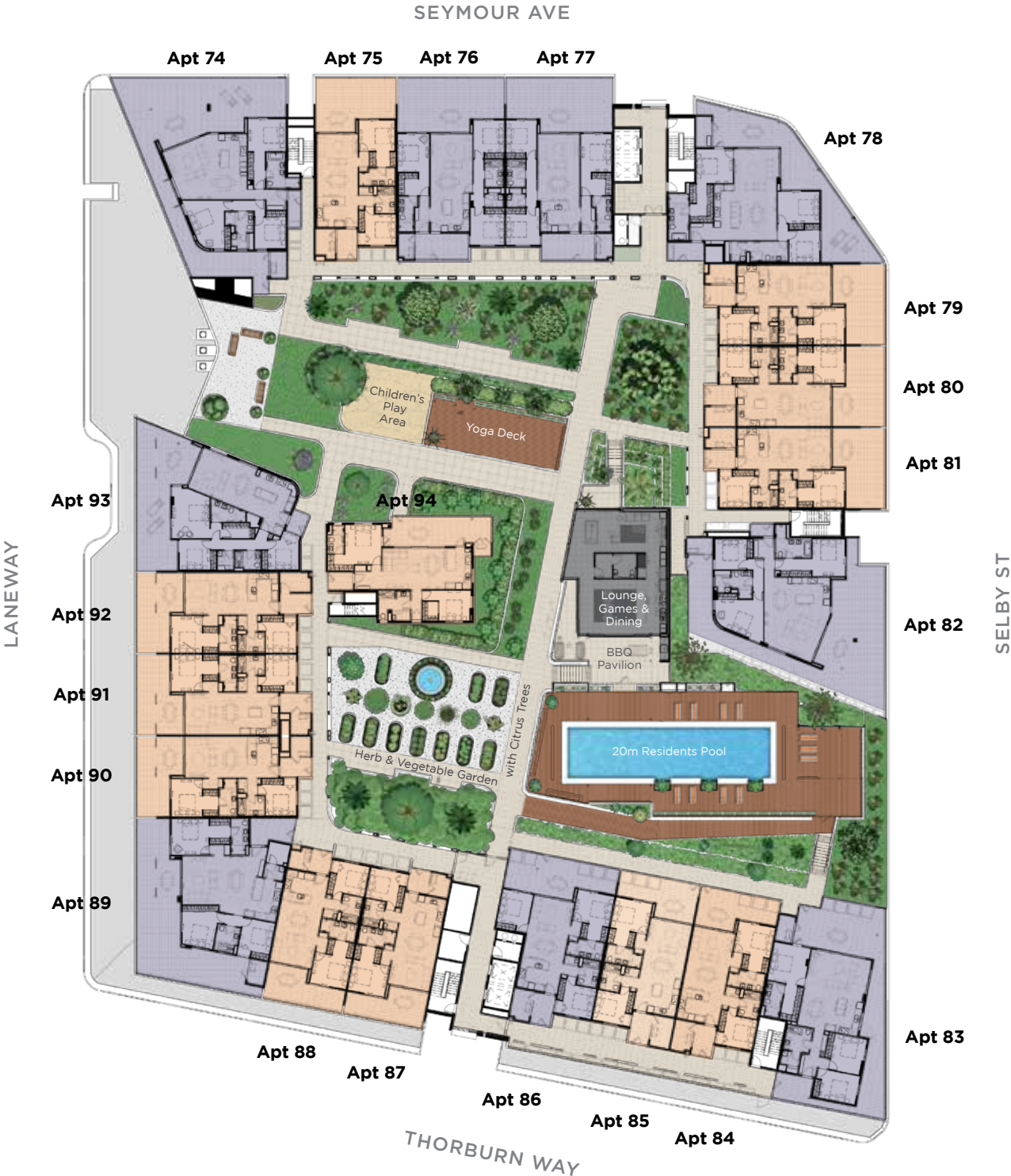


Level 2

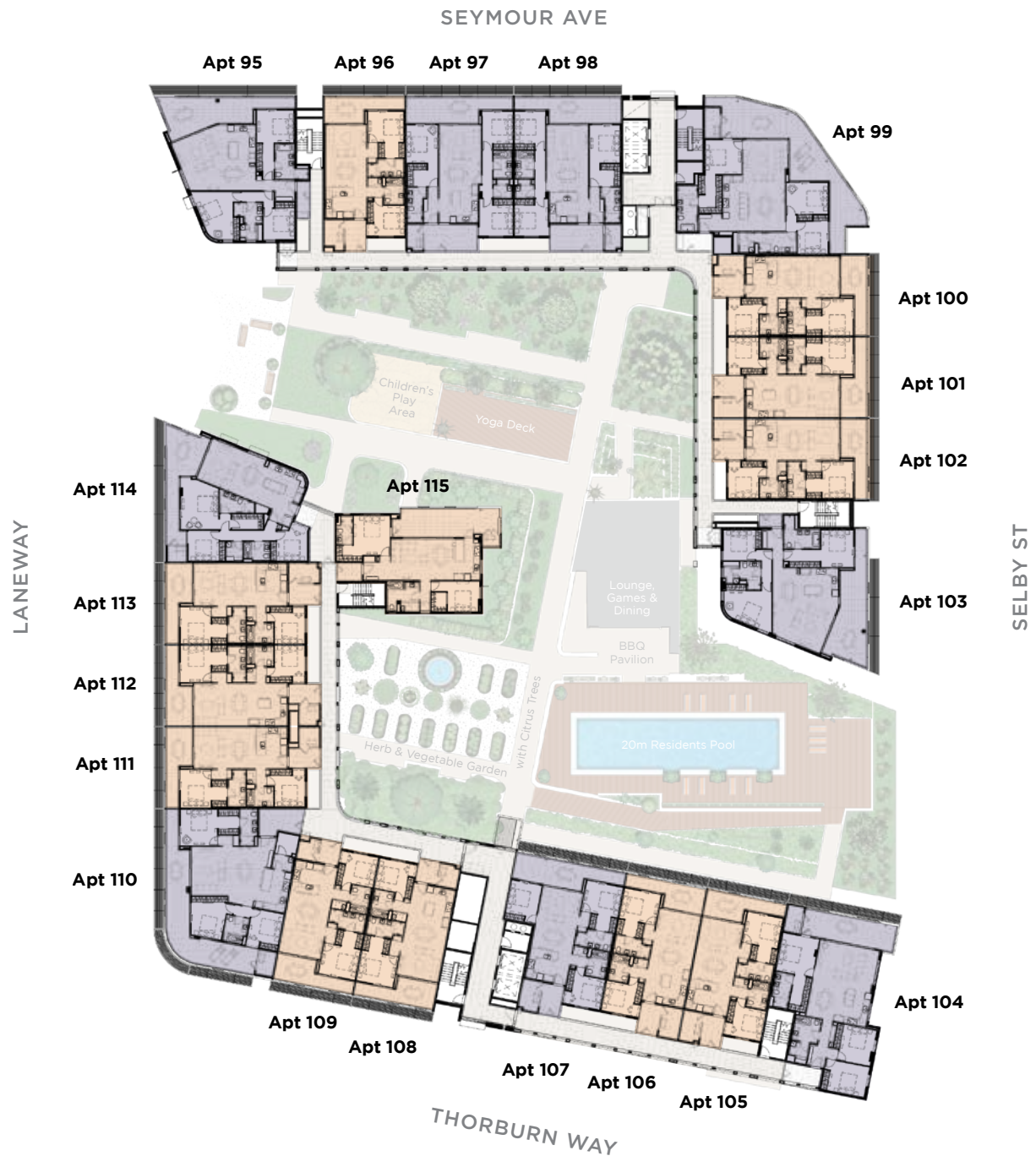


All areas shown are measured Architectural Areas. Dimensions and areas are approximate and are subject to change without notice. Architectural Areas may differ from the areas shown on the Strata Plan. Buyers should refer to the definition of Architectural Areas in Annexure F of the Contract of Sale and to the proposed Strata Plan for their specific apartment in Annexure J of the Contract of Sale. Variations in design can occur in order to comply with the dictates of good construction practice. All the finishes, fixtures, electrical services and facilities illustrated or referred to are subject to availability and may vary. Loose furniture, white goods and planters are not included. Prospective purchasers must rely on their own enquiries and should refer to the Conditions and all annexures contained in the Contract of Sale.

Level 3



Level 4



All areas shown are measured Architectural Areas. Dimensions and areas are approximate and are subject to change without notice. Architectural Areas may differ from the areas shown on the Strata Plan. Buyers should refer to the definition of Architectural Areas in Annexure F of the Contract of Sale and to the proposed Strata Plan for their specific apartment in Annexure J of the Contract of Sale. Variations in design can occur in order to comply with the dictates of good construction practice. All the finishes, fixtures, electrical services and facilities illustrated or referred to are subject to availability and may vary. Loose furniture, white goods and planters are not included. Prospective purchasers must rely on their own enquiries and should refer to the Conditions and all annexures contained in the Contract of Sale.

Level 5



Level 6



All areas shown are measured Architectural Areas. Dimensions and areas are approximate and are subject to change without notice. Architectural Areas may differ from the areas shown on the Strata Plan. Buyers should refer to the definition of Architectural Areas in Annexure F of the Contract of Sale and to the proposed Strata Plan for their specific apartment in Annexure J of the Contract of Sale. Variations in design can occur in order to comply with the dictates of good construction practice. All the finishes, fixtures, electrical services and facilities illustrated or referred to are subject to availability and may vary. Loose furniture, white goods and planters are not included. Prospective purchasers must rely on their own enquiries and should refer to the Conditions and all annexures contained in the Contract of Sale.

