



# THE TERRACES

AT CLAREMONT

# Refined Claremont living.

As the sun rises over Claremont Oval, so golden light washes across The Terraces. Mornings begin with coffee on expansive balconies, savoured with a view. Evenings unfold in the glow of the city and village ambience.

VISION

This refined collection of residences is thoughtfully designed around the unique character of Claremont on the Park—presenting an exceptional opportunity to embrace Western Suburbs living.

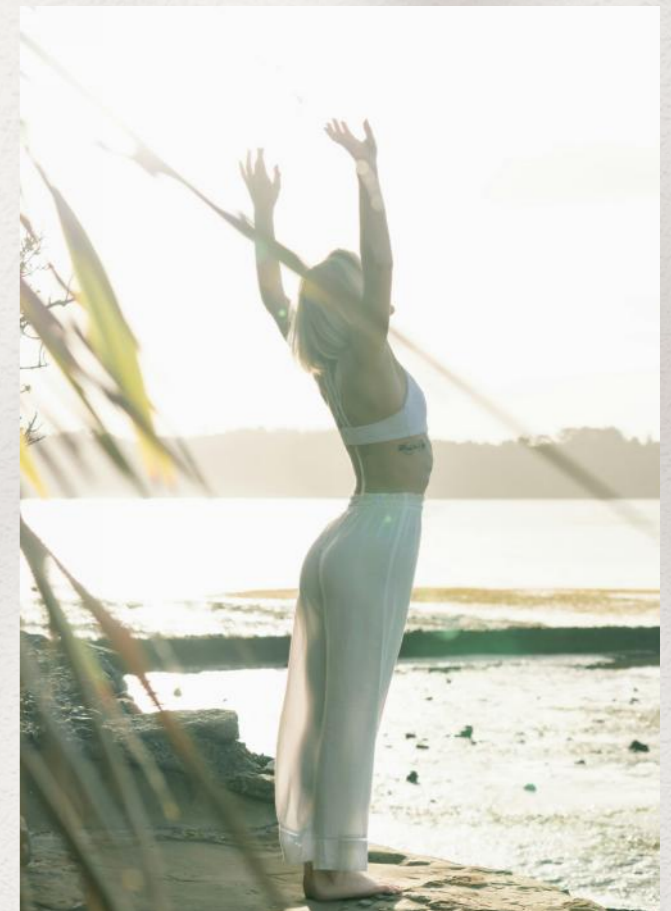
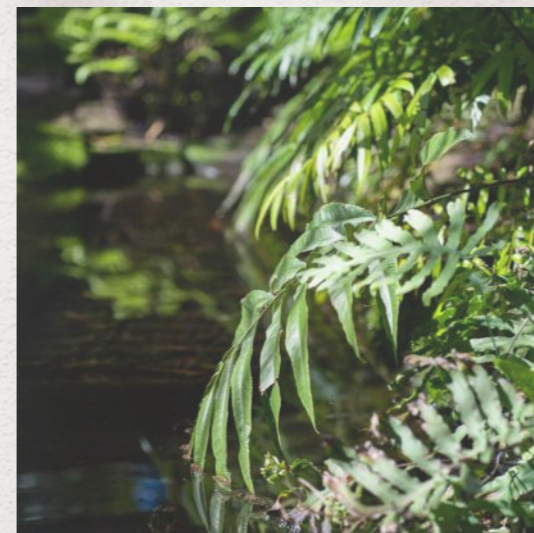


Exterior view from Claremont Oval



## Designed to delight.

This exceptional collection of one, two and three-bedroom residences is designed as a sanctuary of elevated living. With refined finishes, intelligent layouts and resident-only amenities with a focus on wellbeing, every detail enhances daily living.



## THE BUILDING

### A different outlook.

The Terraces is designed around the gentle curve of Claremont Oval, offering panoramic views and capturing northern light in winter. The oval creates a picturesque outlook and a vibrant canvas for each day.



Shenton Walk with ground floor café



Aerial view from North East

Enjoy year-round comfort with double glazing, adjustable balcony screens (unit dependent) and enhanced breezeways designed to keep every residence cooler in summer and warmer in winter, while also reducing strata costs.

Sustainability has been thoughtfully considered throughout, with solar power and intelligent planning delivering an 8-star NatHERS rating and a significant reduction in energy use compared with other similar developments.

LOCATION

The centre of it all.



## LOCATION



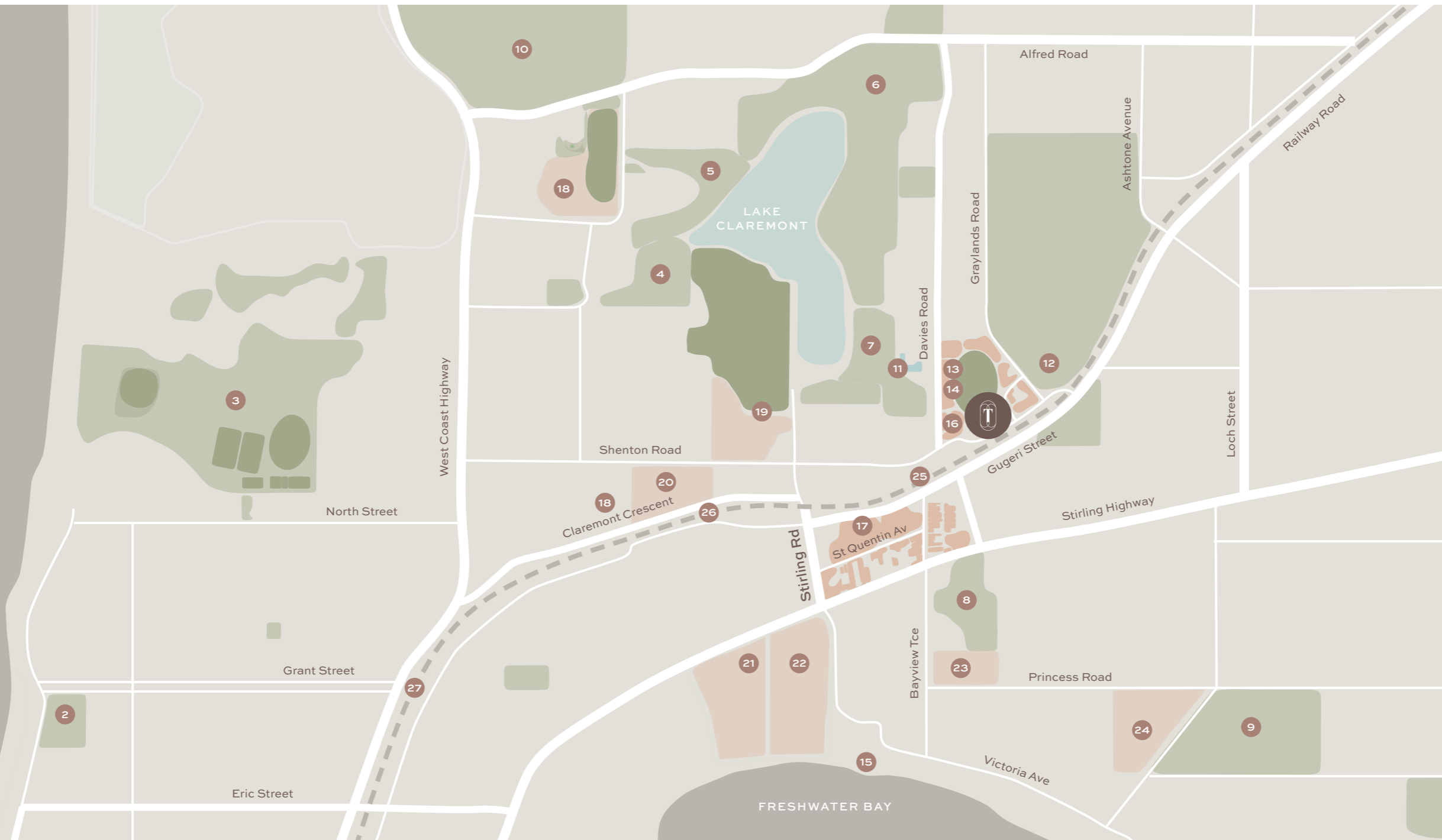
## Everyday luxuries all within reach.

Claremont is defined by its unique character, where timeless charm meets a refined sense of style. A hub for fashion, dining, sport and culture, it's a suburb that continues to evolve while retaining its heritage.

The Terraces sits at the centre of it all—front row to the excitement of Claremont Oval, and just moments from Claremont Quarter, with boutique shopping, cafés and everyday conveniences all within easy walking distance.



LOCATION



## At the heart of Claremont.

### PARKS & BEACHES

- 1 Cottesloe Beach (3.4km)
- 2 Grant Marine Park (3.2km)
- 3 Allen Park (2.5km)
- 4 Cresswell Park (1.9km)
- 5 Ballaruk Bushland (2.9km)
- 6 Lake Claremont Parkland (1.4km)
- 7 Lake Claremont Golf Course (800m)
- 8 Claremont Park (1km walk)
- 9 College Park (2.8km)

### SPORTS & RECREATION

- 10 Cottesloe Golf Course (3km)
- 11 Claremont Pool (600m)
- 12 Claremont Showgrounds (500m)
- 13 Claremont Football Club (300m)
- 14 REVO Fitness (300m)
- 15 Claremont Yacht Club (1.9km)

### RETAIL & SHOPPING

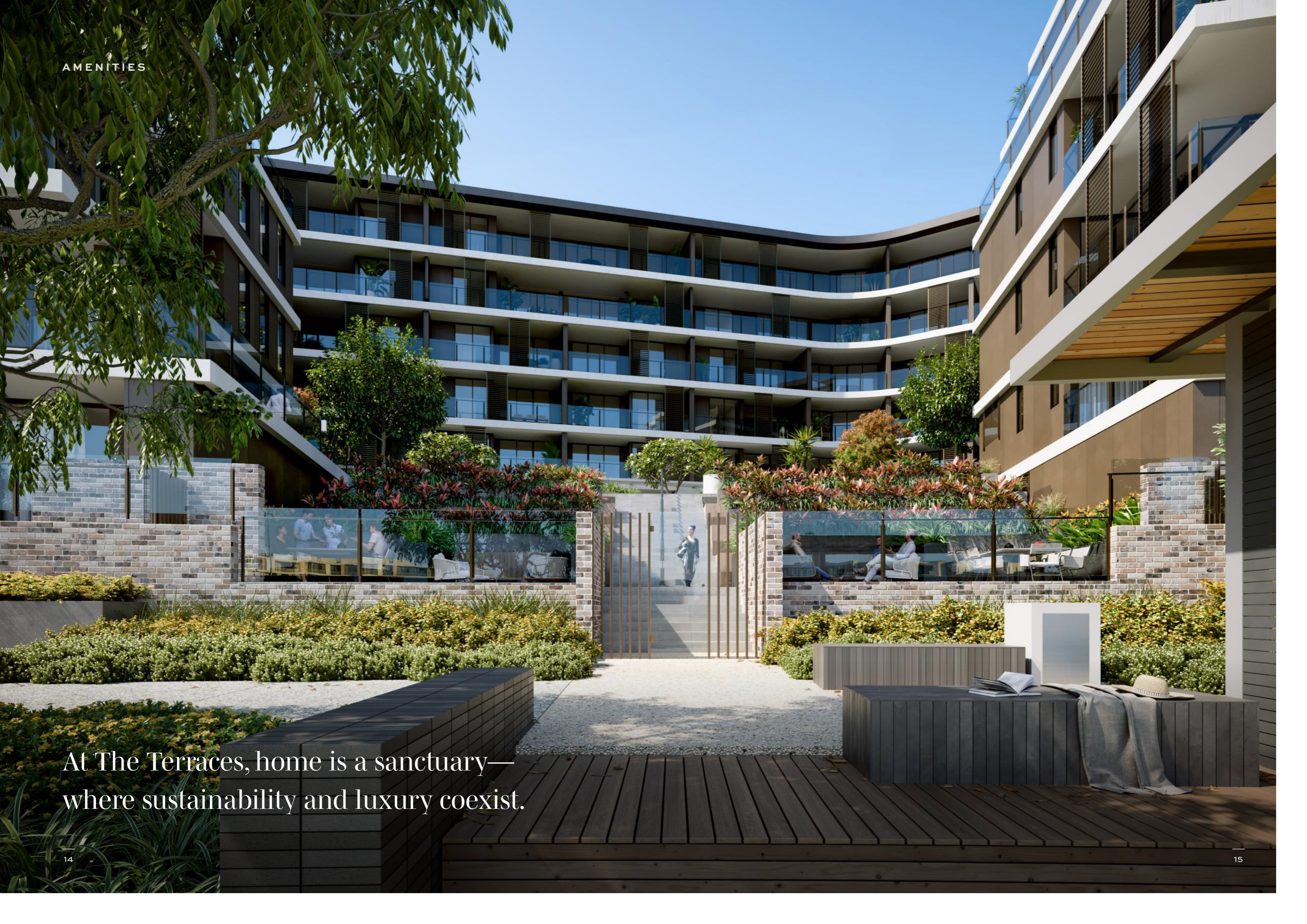
- 16 Foodies Market IGA (300m)
- 17 Claremont Quarter (450m walk)
- 18 Swanbourne Shops (1.6km)

### SCHOOLS

- 19 Swanbourne Primary (2.2km)
- 20 Scotch College (1.2km)
- 21 Methodist Ladies' College (1.5km)
- 22 Christchurch Grammar School (1.5km)
- 23 Freshwater Bay Primary (1.6km)
- 24 University of WA Claremont Campus (2.3km)

### TRANSPORT

- 25 Claremont Train Station (400m walk)
- 26 Swanbourne Train Station (1.4km walk)
- 27 Grant Street Train Station (2.1km walk)



At The Terraces, home is a sanctuary—  
where sustainability and luxury coexist.

## AMENITIES



Terraced residents-only podium

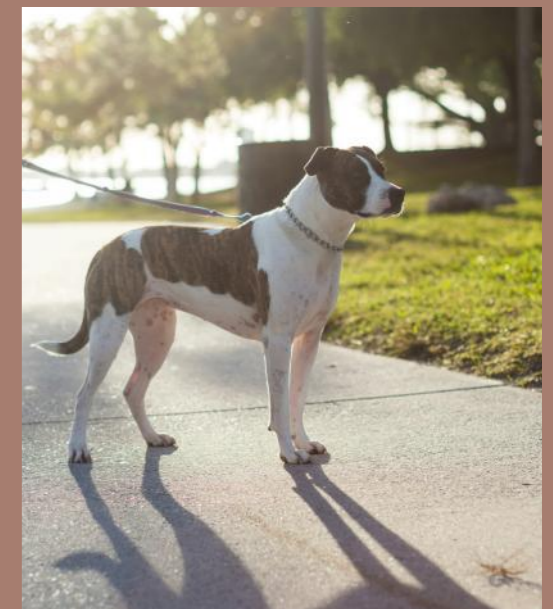
Resident amenities reflect the height of sophistication—including elevated podiums, private dining and lounge areas.

Designed with keen environmental foresight, harnessing natural light, cross-breezes, and uninterrupted vistas, all adding to the living experience that's both refined and effortless.

Welcome to living well.

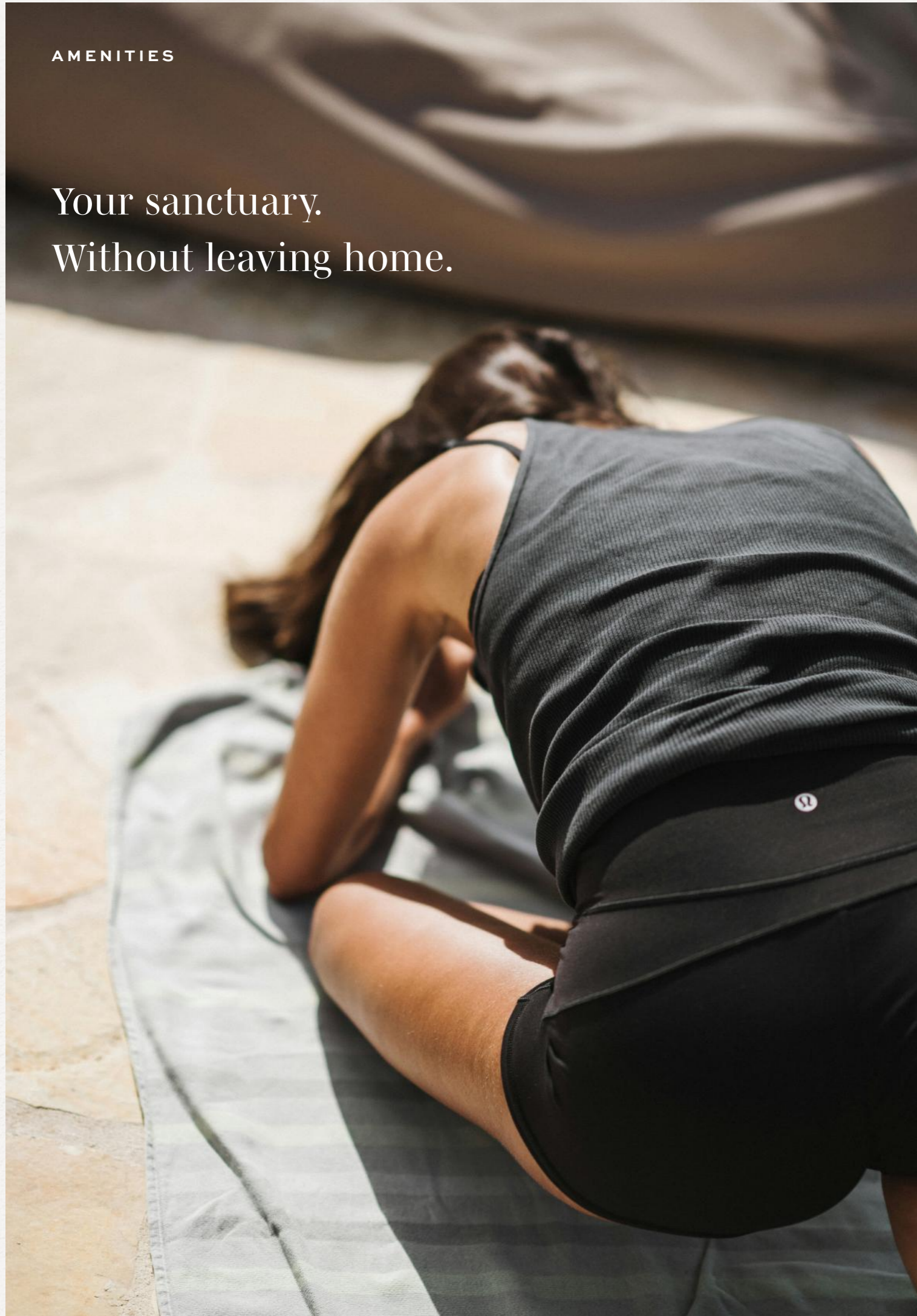


Residents' lounge



AMENITIES

Your sanctuary.  
Without leaving home.



Wellbeing is front of mind at The Terraces. The amenities have been thoughtfully designed to feature dedicated wellness zones, including a gymnasium, yoga deck, and a mindfully curated edible garden.

A spacious sauna completes the facilities, creating a true retreat just steps from each apartment residence.



Residents' gymnasium

AMENITIES



Residents' dining room

## Effortless entertaining.

Gone are the days of entertaining being limited to the home. Acting as an extension of the residences, the private dining area at The Terraces is ideal for hosting a memorable event – bringing comfort, connection and ease to any occasion.

The fully equipped kitchen suits for a variety of functions, thoughtfully appointed nearby to the dining and lounge spaces and featuring premium Miele appliances.



Residents' kitchen

Welcome home to  
everyday elegance.





Apartment 75 kitchen



## Purposeful design.

The refined collection of residences boasts a considered selection of layouts—almost all of which are north-facing, overlooking the picturesque oval.

Inside, every detail is intentional—from elegant materials and expansive living areas to clever storage solutions.

Oversized balconies blend seamlessly with the interiors, framing the breathtaking outlook.



Apartment 108 balcony

RESIDENCES

Where form  
meets function.

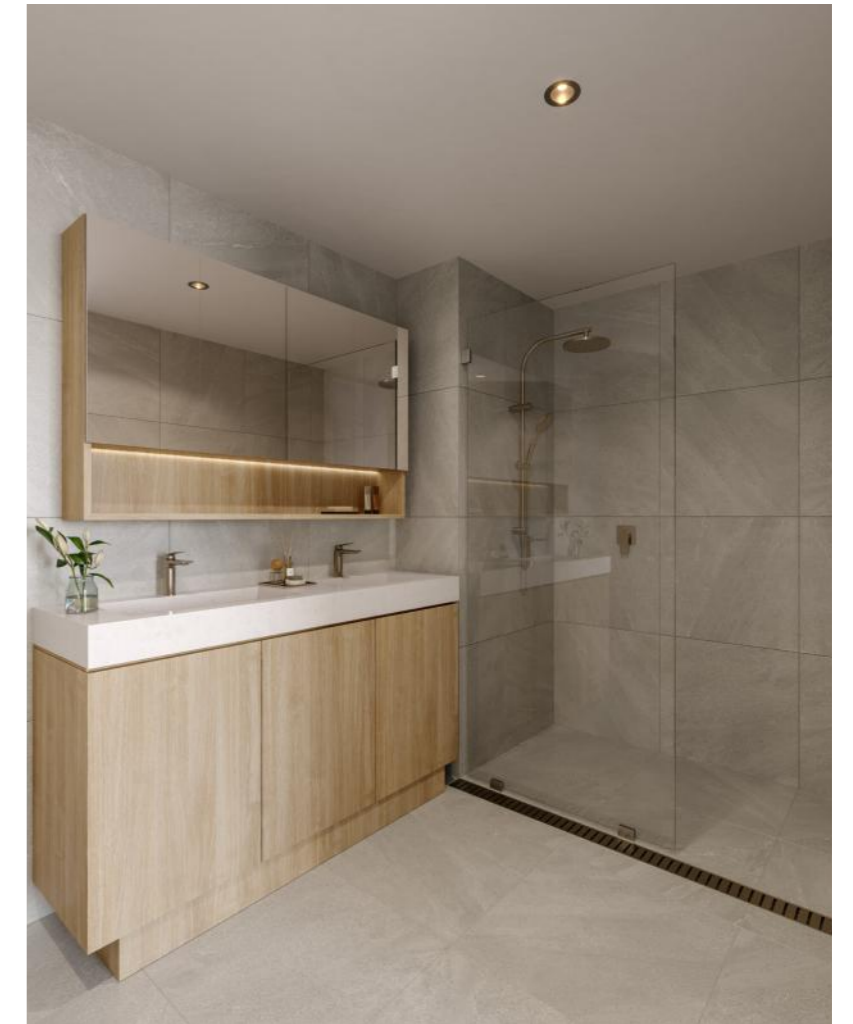
At The Terraces, luxury is an ethos. Kitchens and bathrooms balance style and function, living areas are spacious and refined, and bedrooms are tranquil yet bespoke, featuring full-height wardrobes.

Apartment 5 kitchen and living



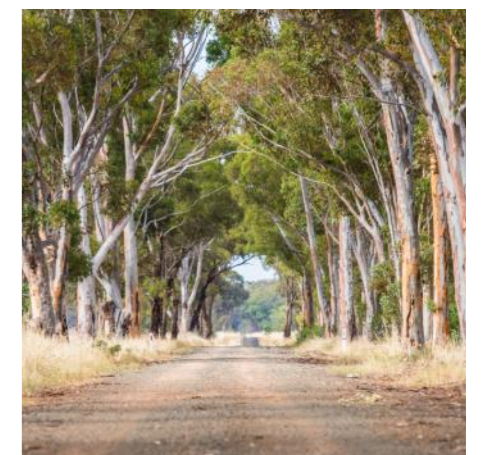
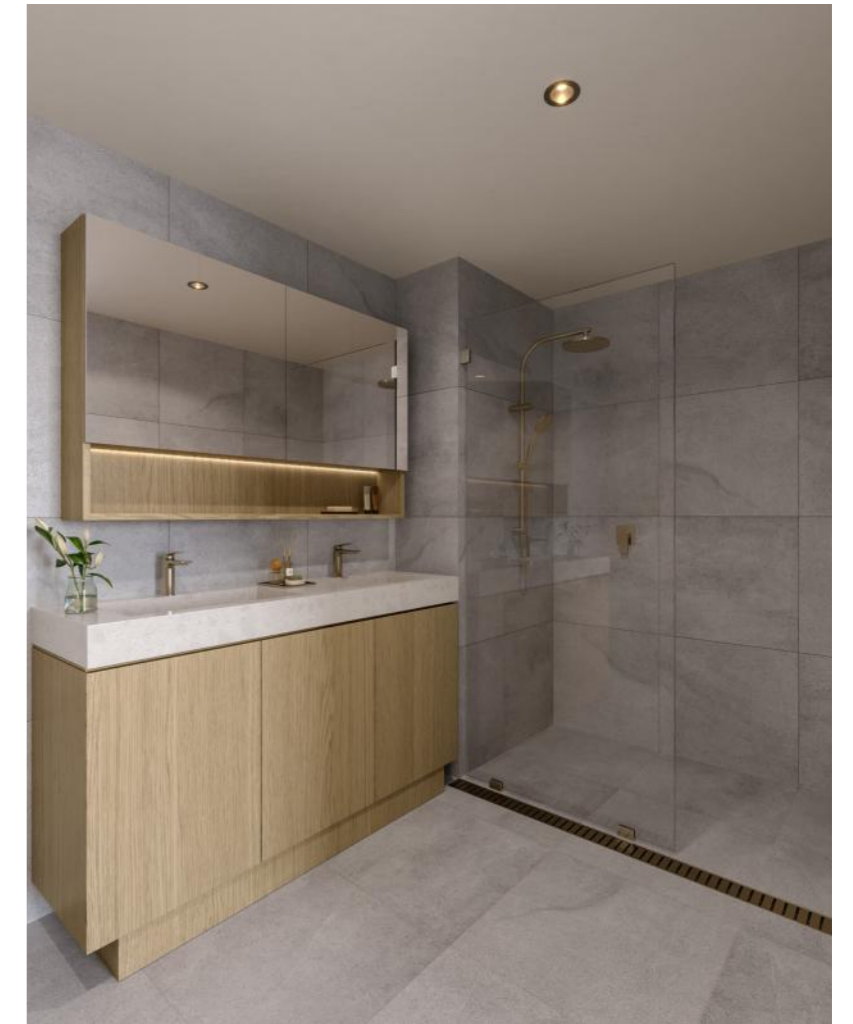
# Beach

Natural, soft and elegant, this scheme captures the essence of Western Australia's pristine beaches.



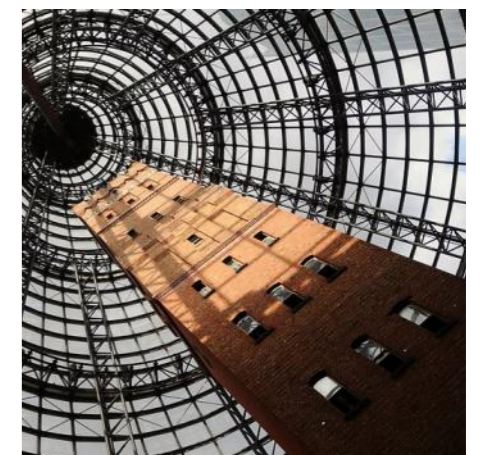
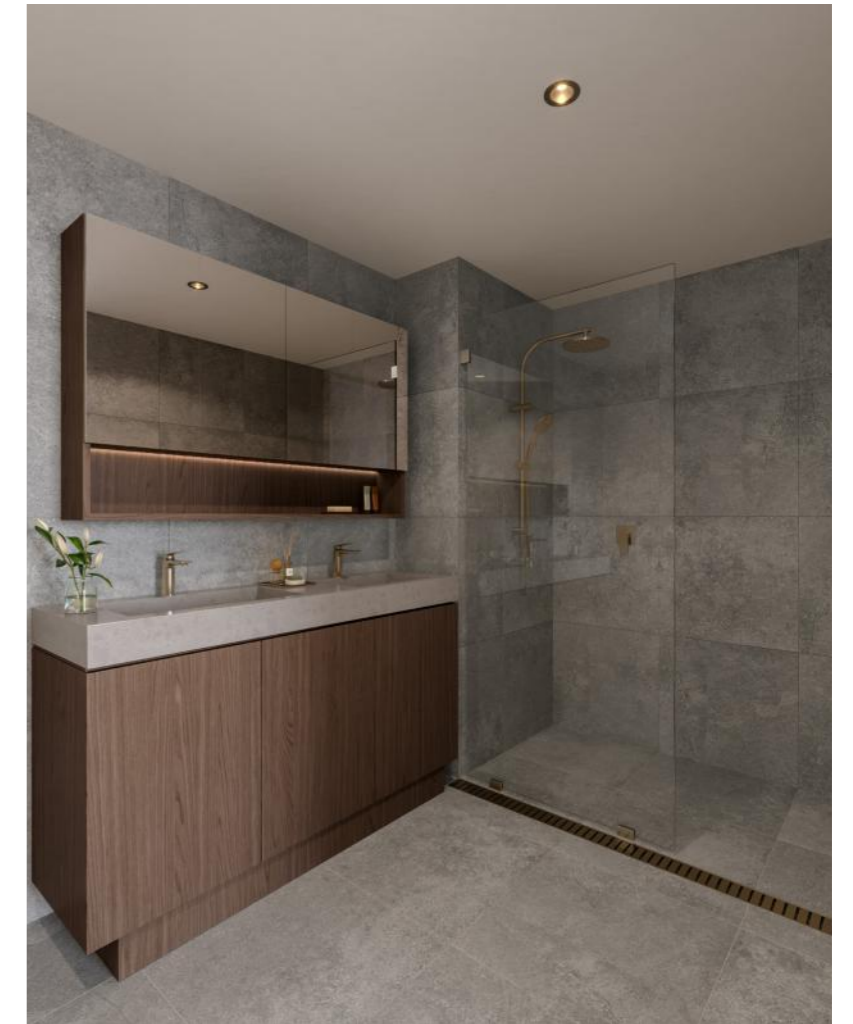
# Bush

A sophisticated blend of greys and earthy tones, this scheme is a subtle reflection of Australia's iconic bushland.



# Urban

Bold and contemporary, this scheme mixes dark and textured finishes to create a refined urban style.



**It takes a talented team to bring such an iconic development to life.**

The team behind The Terraces have combined their extensive experience and ability to deliver a quality, innovative and considerate building that will become a truly exceptional place to call home. With a wealth of collective knowledge and expertise across engineering, construction, design, sustainability and project management, The Terraces team are set to present a unique and exciting opportunity for its future residents.



**METRICS**

DEVELOPER

Metrics is a leading Australian based private markets asset management firm specialising in fixed income, private credit, equity and capital markets.

With more than A\$30 billion in assets under management, Metrics brings deep financial expertise and market insight to every project.



**NORUP**

DELIVERY PARTNER

With over 35 years of experience in Western Australia, John Norup has established a strong reputation as a builder and property developer, having delivered projects valued at more than \$2.5 billion — including around 2,500 apartments.

At Norup, we're committed to creating residences that represent refined living – thoughtfully designed to focus on layouts that live well, materials that hold up, and residences that stand the test of time – architecturally and environmentally.



**HASSELL**

ARCHITECT

Hassell works across architecture, landscape architecture, interior design, and urban design, combining creative expertise with strategy, research, technology, and experience design.

Collaborating with partners worldwide, Hassell aims to create inclusive, sustainable communities and a socially and ecologically resilient world.

A photograph of a person walking on a paved path. The person is wearing dark leggings and is barefoot. A long, dark shadow of the person is cast on the pavement, extending from the right side towards the left. The path is bordered by green grass on the left. The lighting suggests it is either early morning or late afternoon.

Sunrise walks.  
Sunset dining.  
A life well-lived.

A signature collection.

[theterraces.au](http://theterraces.au)



NORUP