

APARTMENT TYPE C1



Apartment

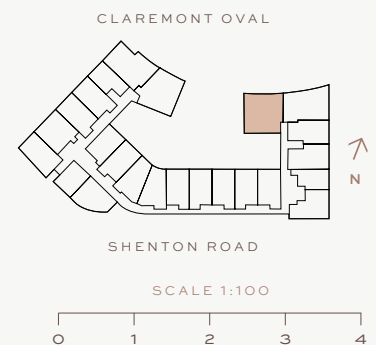
Number	40, 64
Level	Three to Four
Aspect	North

		
3	2	2

Approx Area

Refer to Strata Plan for balcony configuration

Architectural Internal	138m ²
Strata Internal	126m ²
Balcony	37m ²
Store	5m ²
Car Bay	28m ²
Total	196m ²



DISCLAIMER: Please note that the layout plan was produced prior to construction. The information is believed to be correct but is not guaranteed. Changes may be made during construction and dimensions, areas, fittings, finishes and specification are subject to change without notice in accordance with the provisions of the contract for sale. The furniture and furnishings depicted are not included with any sale and purchasers must refer to their contract for sale for the list of inclusions. The position of the furniture and furnishings should not be taken to be indicative of final positions of power points, TV connection points and the like. Prospective purchasers must rely on their own enquiries. All graphics including tile layout and balustrades and the like are indicative only. Bulkheads for services are not depicted.

APARTMENT TYPE C2



Apartment

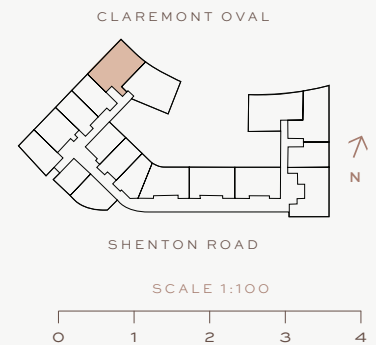
Number	108, 126
Level	Five to Six
Aspect	North

		
3	2	2

Approx Area

Refer to Strata Plan for balcony configuration

Architectural Internal	135m ²
Strata Internal	124m ²
Balcony	50-57m ²
Store	6-7m ²
Car Bay	28m ²
Total	209-215m ²



DISCLAIMER: Please note that the layout plan was produced prior to construction. The information is believed to be correct but is not guaranteed. Changes may be made during construction and dimensions, areas, fittings, finishes and specification are subject to change without notice in accordance with the provisions of the contract for sale. The furniture and furnishings depicted are not included with any sale and purchasers must refer to their contract for sale for the list of inclusions. The position of the furniture and furnishings should not be taken to be indicative of final positions of power points, TV connection points and the like. Prospective purchasers must rely on their own enquiries. All graphics including tile layout and balustrades and the like are indicative only. Bulkheads for services are not depicted.

APARTMENT TYPE C3



Apartment

Number	129
Level	Seven
Aspect	East

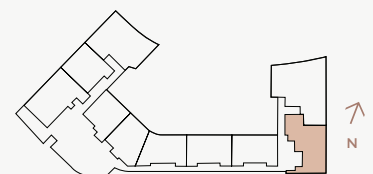
		
3	2	3

Approx Area

Refer to Strata Plan for balcony configuration

Architectural Internal	144m ²
Strata Internal	132m ²
Balcony	65m ²
Store	8m ²
Car Bay	42m ²
Total	247m ²

CLAREMONT OVAL



SHENTON ROAD

SCALE 1:125



DISCLAIMER: Please note that the layout plan was produced prior to construction. The information is believed to be correct but is not guaranteed. Changes may be made during construction and dimensions, areas, fittings, finishes and specification are subject to change without notice in accordance with the provisions of the contract for sale. The furniture and furnishings depicted are not included with any sale and purchasers must refer to their contract for sale for the list of inclusions. The position of the furniture and furnishings should not be taken to be indicative of final positions of power points, TV connection points and the like. Prospective purchasers must rely on their own enquiries. All graphics including tile layout and balustrades and the like are indicative only. Bulkheads for services are not depicted.

APARTMENT TYPE C4



Apartment

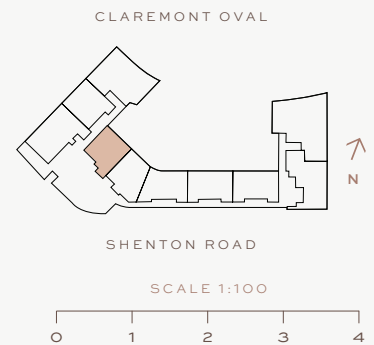
Number	134
Level	Seven
Aspect	North

3	2	2

Approx Area

Refer to Strata Plan for balcony configuration

Architectural Internal	118m ²
Strata Internal	108m ²
Balcony	30m ²
Store	6m ²
Car Bay	28m ²
Total	172m ²



DISCLAIMER: Please note that the layout plan was produced prior to construction. The information is believed to be correct but is not guaranteed. Changes may be made during construction and dimensions, areas, fittings, finishes and specification are subject to change without notice in accordance with the provisions of the contract for sale. The furniture and furnishings depicted are not included with any sale and purchasers must refer to their contract for sale for the list of inclusions. The position of the furniture and furnishings should not be taken to be indicative of final positions of power points, TV connection points and the like. Prospective purchasers must rely on their own enquiries. All graphics including tile layout and balustrades and the like are indicative only. Bulkheads for services are not depicted.

APARTMENT TYPE C5



Apartment

Number	135
Level	Seven
Aspect	West

3	2	2T+1

CAR BAY INFORMATION

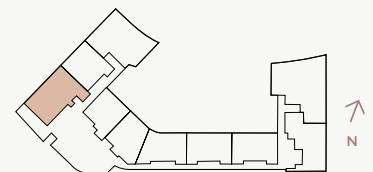
T = Tandem

Approx Area

Refer to Strata Plan for balcony configuration

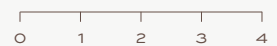
Architectural Internal	126m ²
Strata Internal	116m ²
Balcony	87m ²
Store	7m ²
Car Bay	40m ²
Total	250m ²

CLAREMONT OVAL



SHENTON ROAD

SCALE 1:125



DISCLAIMER: Please note that the layout plan was produced prior to construction. The information is believed to be correct but is not guaranteed. Changes may be made during construction and dimensions, areas, fittings, finishes and specification are subject to change without notice in accordance with the provisions of the contract for sale. The furniture and furnishings depicted are not included with any sale and purchasers must refer to their contract for sale for the list of inclusions. The position of the furniture and furnishings should not be taken to be indicative of final positions of power points, TV connection points and the like. Prospective purchasers must rely on their own enquiries. All graphics including tile layout and balustrades and the like are indicative only. Bulkheads for services are not depicted.

APARTMENT TYPE C6



Apartment

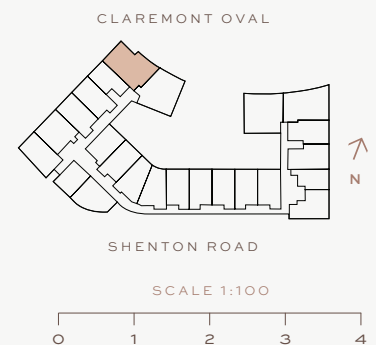
Number	15, 38, 62, 86
Level	One to Four
Aspect	North

		
3	2	2

Approx Area

Refer to Strata Plan for balcony configuration

Architectural Internal	123m ²
Strata Internal	113m ²
Balcony	35-52m ²
Store	5-7m ²
Car Bay	28m ²
Total	181-200m ²



DISCLAIMER: Please note that the layout plan was produced prior to construction. The information is believed to be correct but is not guaranteed. Changes may be made during construction and dimensions, areas, fittings, finishes and specification are subject to change without notice in accordance with the provisions of the contract for sale. The furniture and furnishings depicted are not included with any sale and purchasers must refer to their contract for sale for the list of inclusions. The position of the furniture and furnishings should not be taken to be indicative of final positions of power points, TV connection points and the like. Prospective purchasers must rely on their own enquiries. All graphics including tile layout and balustrades and the like are indicative only. Bulkheads for services are not depicted.

APARTMENT TYPE C7



Apartment

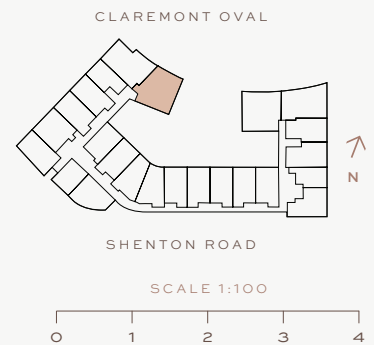
Number	39, 63, 87
Level	Two to Four
Aspect	North

3	2	2

Approx Area

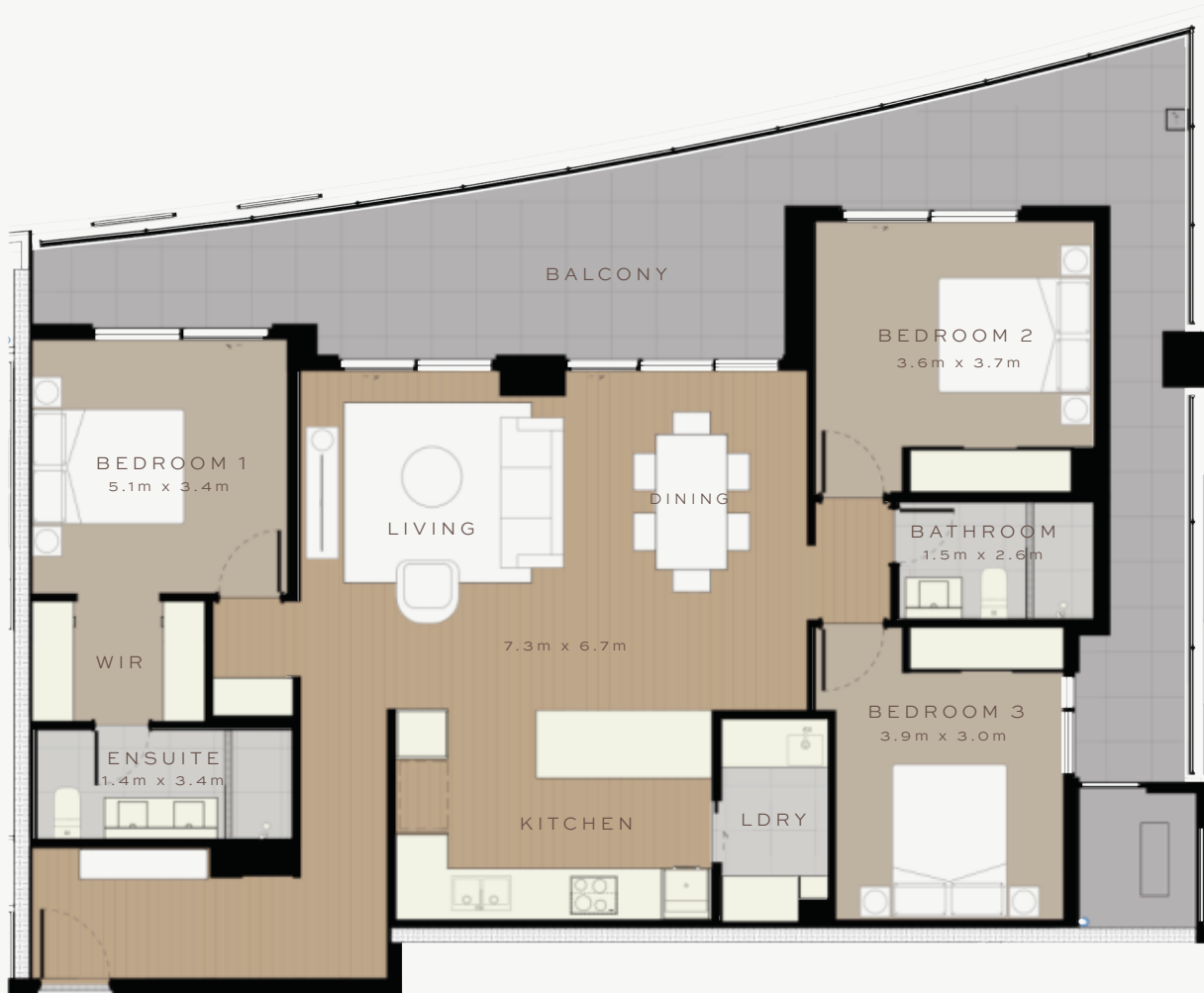
Refer to Strata Plan for balcony configuration

Architectural Internal	135m ²
Strata Internal	123m ²
Balcony	30m ²
Store	5-8m ²
Car Bay	28m ²
Total	189-192m²



DISCLAIMER: Please note that the layout plan was produced prior to construction. The information is believed to be correct but is not guaranteed. Changes may be made during construction and dimensions, areas, fittings, finishes and specification are subject to change without notice in accordance with the provisions of the contract for sale. The furniture and furnishings depicted are not included with any sale and purchasers must refer to their contract for sale for the list of inclusions. The position of the furniture and furnishings should not be taken to be indicative of final positions of power points, TV connection points and the like. Prospective purchasers must rely on their own enquiries. All graphics including tile layout and balustrades and the like are indicative only. Bulkheads for services are not depicted.

APARTMENT TYPE C8



Apartment

Number	4*(TS), 17, 41, 65
Level	One to Four
Aspect	North

* Note: Refer to architectural plan for minor amendments to this apartment layout.

3	2	2

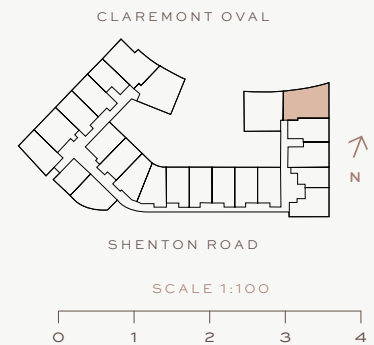
CAR BAY INFORMATION

S = Small bay
T = Tandem

Approx Area

Refer to Strata Plan for balcony configuration

Architectural Internal	123m ²
Strata Internal	112-113m ²
Balcony	43-68m ²
Store	5-7m ²
Car Bay	26-28m ²
Total	189-213m ²



DISCLAIMER: Please note that the layout plan was produced prior to construction. The information is believed to be correct but is not guaranteed. Changes may be made during construction and dimensions, areas, fittings, finishes and specification are subject to change without notice in accordance with the provisions of the contract for sale. The furniture and furnishings depicted are not included with any sale and purchasers must refer to their contract for sale for the list of inclusions. The position of the furniture and furnishings should not be taken to be indicative of final positions of power points, TV connection points and the like. Prospective purchasers must rely on their own enquiries. All graphics including tile layout and balustrades and the like are indicative only. Bulkheads for services are not depicted.

APARTMENT TYPE C9



Apartment

Number	109(2), 127 (2T+1)
Level	Five to Six
Aspect	North

3	2	2-3

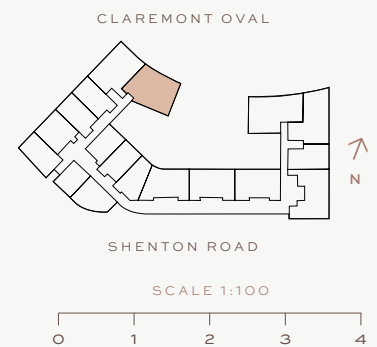
CAR BAY INFORMATION

T = Tandem

Approx Area

Refer to Strata Plan for balcony configuration

Architectural Internal	141m ²
Strata Internal	129m ²
Balcony	54-88m ²
Store	6m ²
Car Bay	28-40m ²
Total	229-251m ²



DISCLAIMER: Please note that the layout plan was produced prior to construction. The information is believed to be correct but is not guaranteed. Changes may be made during construction and dimensions, areas, fittings, finishes and specification are subject to change without notice in accordance with the provisions of the contract for sale. The furniture and furnishings depicted are not included with any sale and purchasers must refer to their contract for sale for the list of inclusions. The position of the furniture and furnishings should not be taken to be indicative of final positions of power points, TV connection points and the like. Prospective purchasers must rely on their own enquiries. All graphics including tile layout and balustrades and the like are indicative only. Bulkheads for services are not depicted.

APARTMENT TYPE C10



Apartment

Number	88**, 110*
Level	Five to Six
Aspect	North

** Note: Refer to architectural plan for minor amendments to this apartment layout.

		
3	2	2-3

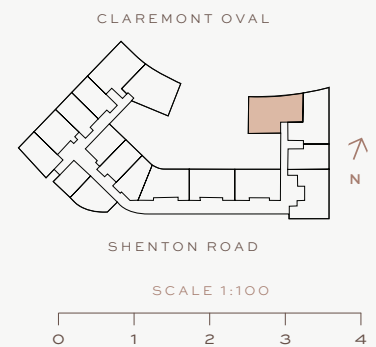
CAR BAY INFORMATION

* = Height restriction of 2100mm

Approx Area

Refer to Strata Plan for balcony configuration

Architectural Internal	137m ²
Strata Internal	126m ²
Balcony	69-105m ²
Store	5m ²
Car Bay	28-42m ²
Total	242-264m ²



DISCLAIMER: Please note that the layout plan was produced prior to construction. The information is believed to be correct but is not guaranteed. Changes may be made during construction and dimensions, areas, fittings, finishes and specification are subject to change without notice in accordance with the provisions of the contract for sale. The furniture and furnishings depicted are not included with any sale and purchasers must refer to their contract for sale for the list of inclusions. The position of the furniture and furnishings should not be taken to be indicative of final positions of power points, TV connection points and the like. Prospective purchasers must rely on their own enquiries. All graphics including tile layout and balustrades and the like are indicative only. Bulkheads for services are not depicted.

APARTMENT TYPE C11



Apartment

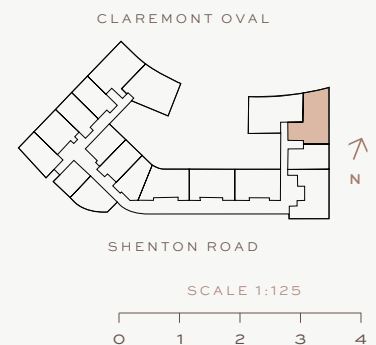
Number	89, 111
Level	Five to Six
Aspect	North

3	2	2

Approx Area

Refer to Strata Plan for balcony configuration

Architectural Internal	135m ²
Strata Internal	124m ²
Balcony	60-68m ²
Store	5m ²
Car Bay	28m ²
Total	217-225m²



DISCLAIMER: Please note that the layout plan was produced prior to construction. The information is believed to be correct but is not guaranteed. Changes may be made during construction and dimensions, areas, fittings, finishes and specification are subject to change without notice in accordance with the provisions of the contract for sale. The furniture and furnishings depicted are not included with any sale and purchasers must refer to their contract for sale for the list of inclusions. The position of the furniture and furnishings should not be taken to be indicative of final positions of power points, TV connection points and the like. Prospective purchasers must rely on their own enquiries. All graphics including tile layout and balustrades and the like are indicative only. Bulkheads for services are not depicted.

APARTMENT TYPE C12



Apartment

Number	128
Level	Seven
Aspect	North

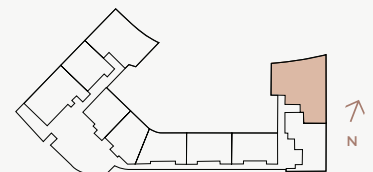
		
3	2	3

Approx Area

Refer to Strata Plan for balcony configuration

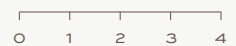
Architectural Internal	193m ²
Strata Internal	180m ²
Balcony	132m ²
Store	11m ²
Car Bay	42m ²
Total	365m ²

CLAREMONT OVAL



SHENTON ROAD

SCALE 1:150



DISCLAIMER: Please note that the layout plan was produced prior to construction. The information is believed to be correct but is not guaranteed. Changes may be made during construction and dimensions, areas, fittings, finishes and specification are subject to change without notice in accordance with the provisions of the contract for sale. The furniture and furnishings depicted are not included with any sale and purchasers must refer to their contract for sale for the list of inclusions. The position of the furniture and furnishings should not be taken to be indicative of final positions of power points, TV connection points and the like. Prospective purchasers must rely on their own enquiries. All graphics including tile layout and balustrades and the like are indicative only. Bulkheads for services are not depicted.

APARTMENT TYPE C13



Apartment

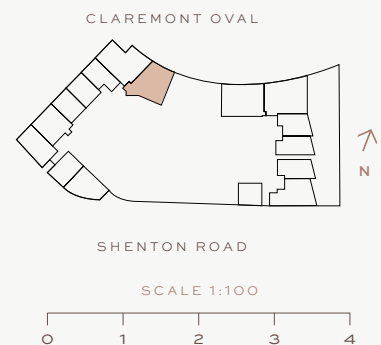
Number	16
Level	One
Aspect	North

3	2	2

Approx Area

Refer to Strata Plan for balcony configuration

Architectural Internal	124m ²
Strata Internal	114m ²
Balcony	36m ²
Store	5m ²
Car Bay	28m ²
Total	183m²



DISCLAIMER: Please note that the layout plan was produced prior to construction. The information is believed to be correct but is not guaranteed. Changes may be made during construction and dimensions, areas, fittings, finishes and specification are subject to change without notice in accordance with the provisions of the contract for sale. The furniture and furnishings depicted are not included with any sale and purchasers must refer to their contract for sale for the list of inclusions. The position of the furniture and furnishings should not be taken to be indicative of final positions of power points, TV connection points and the like. Prospective purchasers must rely on their own enquiries. All graphics including tile layout and balustrades and the like are indicative only. Bulkheads for services are not depicted.

APARTMENT TYPE C14



Apartment

Some apartments may be a mirrored version of the above

Number	114, 115*, 130, 131*
Level	Six to Seven
Aspect	North

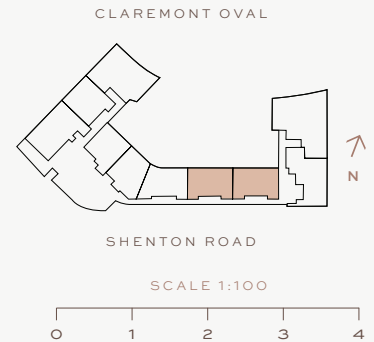
* Note: Refer to architectural plan for minor amendments to this apartment layout.

		
3	2	2

Approx Area

Refer to Strata Plan for balcony configuration

Architectural Internal	124-125m ²
Strata Internal	113-114m ²
Balcony	34m ²
Store	5m ²
Car Bay	28m ²
Total	180-181m ²



DISCLAIMER: Please note that the layout plan was produced prior to construction. The information is believed to be correct but is not guaranteed. Changes may be made during construction and dimensions, areas, fittings, finishes and specification are subject to change without notice in accordance with the provisions of the contract for sale. The furniture and furnishings depicted are not included with any sale and purchasers must refer to their contract for sale for the list of inclusions. The position of the furniture and furnishings should not be taken to be indicative of final positions of power points, TV connection points and the like. Prospective purchasers must rely on their own enquiries. All graphics including tile layout and balustrades and the like are indicative only. Bulkheads for services are not depicted.

APARTMENT TYPE C15



Apartment

Number	116*(2), 132 (2TS+1)
Level	Six to Seven
Aspect	North

* Note: Refer to architectural plan for minor amendments to this apartment layout.

3	2	2-3

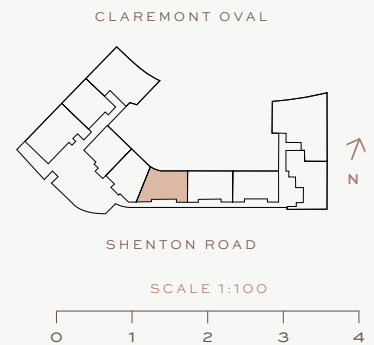
CAR BAY INFORMATION

S = Small bay
T = Tandem

Approx Area

Refer to Strata Plan for balcony configuration

Architectural Internal	121m ²
Strata Internal	111m ²
Balcony	35m ²
Store	5-6m ²
Car Bay	28-40m ²
Total	180-191m ²



DISCLAIMER: Please note that the layout plan was produced prior to construction. The information is believed to be correct but is not guaranteed. Changes may be made during construction and dimensions, areas, fittings, finishes and specification are subject to change without notice in accordance with the provisions of the contract for sale. The furniture and furnishings depicted are not included with any sale and purchasers must refer to their contract for sale for the list of inclusions. The position of the furniture and furnishings should not be taken to be indicative of final positions of power points, TV connection points and the like. Prospective purchasers must rely on their own enquiries. All graphics including tile layout and balustrades and the like are indicative only. Bulkheads for services are not depicted.

APARTMENT TYPE C16



Apartment

Number	133
Level	Seven
Aspect	North

3	2	3

Approx Area

Refer to Strata Plan for balcony configuration

Architectural Internal	133m ²
Strata Internal	123m ²
Balcony	25m ²
Store	7m ²
Car Bay	42m ²
Total	197m ²



DISCLAIMER: Please note that the layout plan was produced prior to construction. The information is believed to be correct but is not guaranteed. Changes may be made during construction and dimensions, areas, fittings, finishes and specification are subject to change without notice in accordance with the provisions of the contract for sale. The furniture and furnishings depicted are not included with any sale and purchasers must refer to their contract for sale for the list of inclusions. The position of the furniture and furnishings should not be taken to be indicative of final positions of power points, TV connection points and the like. Prospective purchasers must rely on their own enquiries. All graphics including tile layout and balustrades and the like are indicative only. Bulkheads for services are not depicted.

APARTMENT TYPE C18



Apartment

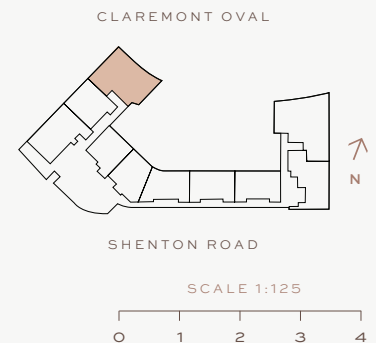
Number	137
Level	Seven
Aspect	North

3	2	3

Approx Area

Refer to Strata Plan for balcony configuration

Architectural Internal	157m ²
Strata Internal	145m ²
Balcony	106m ²
Store	14m ²
Car Bay	42m ²
Total	307m ²



DISCLAIMER: Please note that the layout plan was produced prior to construction. The information is believed to be correct but is not guaranteed. Changes may be made during construction and dimensions, areas, fittings, finishes and specification are subject to change without notice in accordance with the provisions of the contract for sale. The furniture and furnishings depicted are not included with any sale and purchasers must refer to their contract for sale for the list of inclusions. The position of the furniture and furnishings should not be taken to be indicative of final positions of power points, TV connection points and the like. Prospective purchasers must rely on their own enquiries. All graphics including tile layout and balustrades and the like are indicative only. Bulkheads for services are not depicted.

APARTMENT TYPE C19



Apartment

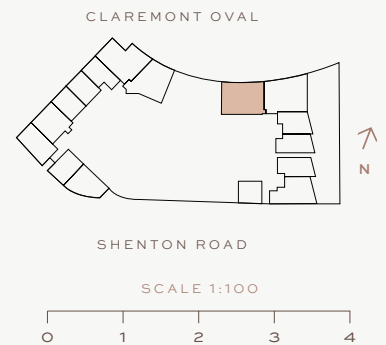
Number	3
Level	One
Aspect	North

3	2	2

Approx Area

Refer to Strata Plan for balcony configuration

Architectural Internal	127m ²
Strata Internal	116m ²
Balcony	53m ²
Store	5m ²
Car Bay	28m ²
Total	202m²



DISCLAIMER: Please note that the layout plan was produced prior to construction. The information is believed to be correct but is not guaranteed. Changes may be made during construction and dimensions, areas, fittings, finishes and specification are subject to change without notice in accordance with the provisions of the contract for sale. The furniture and furnishings depicted are not included with any sale and purchasers must refer to their contract for sale for the list of inclusions. The position of the furniture and furnishings should not be taken to be indicative of final positions of power points, TV connection points and the like. Prospective purchasers must rely on their own enquiries. All graphics including tile layout and balustrades and the like are indicative only. Bulkheads for services are not depicted.