

APARTMENT TYPE B1

		
2	1	1



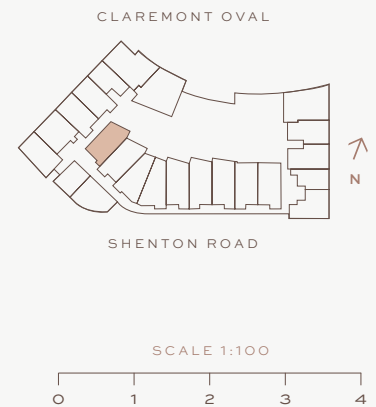
Apartment

Number	30, 54, 78, 101, 119
Level	Two to Six
Aspect	North

Approx Area

Refer to Strata Plan for balcony configuration

Architectural Internal	77m ²
Strata Internal	70m ²
Balcony	16-31m ²
Store	4-5m ²
Car Bay	14m ²
Total	104-119m ²



DISCLAIMER: Please note that the layout plan was produced prior to construction. The information is believed to be correct but is not guaranteed. Changes may be made during construction and dimensions, areas, fittings, finishes and specification are subject to change without notice in accordance with the provisions of the contract for sale. The furniture and furnishings depicted are not included with any sale and purchasers must refer to their contract for sale for the list of inclusions. The position of the furniture and furnishings should not be taken to be indicative of final positions of power points, TV connection points and the like. Prospective purchasers must rely on their own enquiries. All graphics including tile layout and balustrades and the like are indicative only. Bulkheads for services are not depicted.

APARTMENT TYPE B2

		
2	1	1



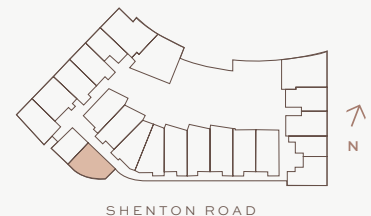
Apartment

Number	10, 31*, 55*, 79, 102, 120
Level	One to Six
Aspect	South

Approx Area

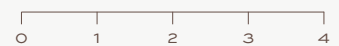
Refer to Strata Plan for balcony configuration	
Architectural Internal	78m ²
Strata Internal	70m ²
Balcony	27-38m ²
Store	4m ²
Car Bay	14m ²
Total	115-126m ²

CLAREMONT OVAL



SHENTON ROAD

SCALE 1:100



CAR BAY INFORMATION

* = Height restriction of 2100mm

DISCLAIMER: Please note that the layout plan was produced prior to construction. The information is believed to be correct but is not guaranteed. Changes may be made during construction and dimensions, areas, fittings, finishes and specification are subject to change without notice in accordance with the provisions of the contract for sale. The furniture and furnishings depicted are not included with any sale and purchasers must refer to their contract for sale for the list of inclusions. The position of the furniture and furnishings should not be taken to be indicative of final positions of power points, TV connection points and the like. Prospective purchasers must rely on their own enquiries. All graphics including tile layout and balustrades and the like are indicative only. Bulkheads for services are not depicted.

APARTMENT TYPE B3

		
2	2	1-2



Apartment

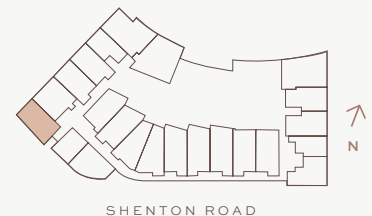
Number	12(1), 33(2TSS), 57(2TSS) 81(2TS), 104(2T), 122(2TS)
Level	One to Six
Aspect	West

Approx Area

Refer to Strata Plan for balcony configuration

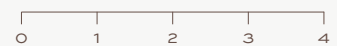
Architectural Internal	90m ²
Strata Internal	82m ²
Balcony	16m ²
Store	4m ²
Car Bay	14-27m ²
Total	116-129m ²

CLAREMONT OVAL



SHENTON ROAD

SCALE 1:100



CAR BAY INFORMATION

S = Small bay
T = Tandem
SS = 2 x small bays

DISCLAIMER: Please note that the layout plan was produced prior to construction. The information is believed to be correct but is not guaranteed. Changes may be made during construction and dimensions, areas, fittings, finishes and specification are subject to change without notice in accordance with the provisions of the contract for sale. The furniture and furnishings depicted are not included with any sale and purchasers must refer to their contract for sale for the list of inclusions. The position of the furniture and furnishings should not be taken to be indicative of final positions of power points, TV connection points and the like. Prospective purchasers must rely on their own enquiries. All graphics including tile layout and balustrades and the like are indicative only. Bulkheads for services are not depicted.

APARTMENT TYPE B4

		
2	2	2T



Apartment

Some apartments may be a mirrored version of the above

Number	22(SS), 23, 24, 25(S), 26, 29(SS), 35, 36, 46, 47, 48, 49, 50, 53, 59(S), 60(S), 70, 71, 72, 73, 74, 77, 83, 84, 93, 94, 95, 96, 97, 100, 106, 107, 118(S), 124(S), 125(S)
--------	---

Level	Two to Six
-------	------------

Aspect	North & West
--------	--------------

Approx Area

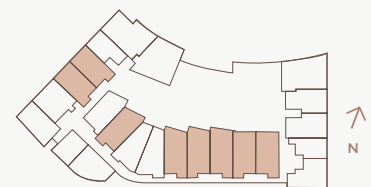
Refer to Strata Plan for balcony configuration

Architectural Internal	87-88m ²
Strata Internal	79-80m ²
Balcony	13-38m ²
Store	4-9m ²
Car Bay	25-27m ²
Total	123-152m ²

CAR BAY INFORMATION

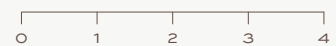
S = Small bay
SS = 2 x small bays
T = Tandem

CLAREMONT OVAL



SHENTON ROAD

SCALE 1:100



DISCLAIMER: Please note that the layout plan was produced prior to construction. The information is believed to be correct but is not guaranteed. Changes may be made during construction and dimensions, areas, fittings, finishes and specification are subject to change without notice in accordance with the provisions of the contract for sale. The furniture and furnishings depicted are not included with any sale and purchasers must refer to their contract for sale for the list of inclusions. The position of the furniture and furnishings should not be taken to be indicative of final positions of power points, TV connection points and the like. Prospective purchasers must rely on their own enquiries. All graphics including tile layout and balustrades and the like are indicative only. Bulkheads for services are not depicted.

APARTMENT TYPE B5



Apartment

Number	27, 51(S), 75, 98(S)
Level	Two to Five
Aspect	North

2	2	2T

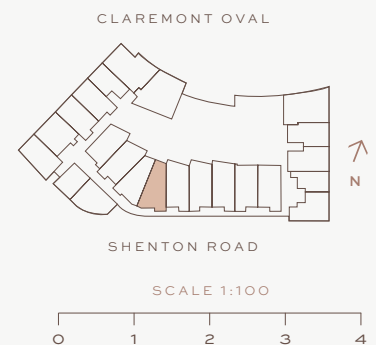
CAR BAY INFORMATION

S = Small bay
T = Tandem

Approx Area

Refer to Strata Plan for balcony configuration

Architectural Internal	92m ²
Strata Internal	84m ²
Balcony	13-26m ²
Store	4-7m ²
Car Bay	26-27m ²
Total	129-141m ²



DISCLAIMER: Please note that the layout plan was produced prior to construction. The information is believed to be correct but is not guaranteed. Changes may be made during construction and dimensions, areas, fittings, finishes and specification are subject to change without notice in accordance with the provisions of the contract for sale. The furniture and furnishings depicted are not included with any sale and purchasers must refer to their contract for sale for the list of inclusions. The position of the furniture and furnishings should not be taken to be indicative of final positions of power points, TV connection points and the like. Prospective purchasers must rely on their own enquiries. All graphics including tile layout and balustrades and the like are indicative only. Bulkheads for services are not depicted.

APARTMENT TYPE B6



Apartment

Number	28, 52, 76, 99, 117*(S)
Level	Two to Six
Aspect	

* Note: Refer to architectural plan for minor amendments to this apartment layout.

2	2	2T

CAR BAY INFORMATION

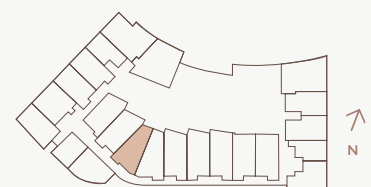
S = Small bay
T = Tandem

Approx Area

Refer to Strata Plan for balcony configuration

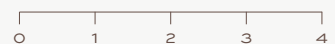
Architectural Internal	91-92m ²
Strata Internal	83-84m ²
Balcony	13-21m ²
Store	4-6m ²
Car Bay	26-27m ²
Total	128-137m ²

CLAREMONT OVAL



SHENTON ROAD

SCALE 1:100



DISCLAIMER: Please note that the layout plan was produced prior to construction. The information is believed to be correct but is not guaranteed. Changes may be made during construction and dimensions, areas, fittings, finishes and specification are subject to change without notice in accordance with the provisions of the contract for sale. The furniture and furnishings depicted are not included with any sale and purchasers must refer to their contract for sale for the list of inclusions. The position of the furniture and furnishings should not be taken to be indicative of final positions of power points, TV connection points and the like. Prospective purchasers must rely on their own enquiries. All graphics including tile layout and balustrades and the like are indicative only. Bulkheads for services are not depicted.

APARTMENT TYPE B7

		
2	2	1-2T



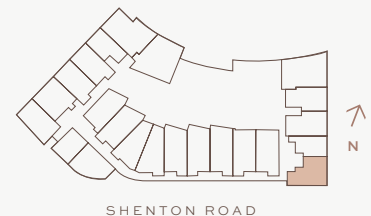
Apartment

Number	8(1), 21(2TSS), 45(2T), 69(2T), 92(2T)
Level	One to Five
Aspect	East

Approx Area

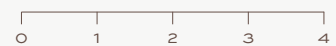
Refer to Strata Plan for balcony configuration	
Architectural Internal	86m ²
Strata Internal	78m ²
Balcony	26-49m ²
Store	4-6m ²
Car Bay	14-27m ²
Total	134-145m ²

CLAREMONT OVAL



SHENTON ROAD

SCALE 1:100



CAR BAY INFORMATION

S = Small bay
SS = 2 x small bays
T = Tandem

DISCLAIMER: Please note that the layout plan was produced prior to construction. The information is believed to be correct but is not guaranteed. Changes may be made during construction and dimensions, areas, fittings, finishes and specification are subject to change without notice in accordance with the provisions of the contract for sale. The furniture and furnishings depicted are not included with any sale and purchasers must refer to their contract for sale for the list of inclusions. The position of the furniture and furnishings should not be taken to be indicative of final positions of power points, TV connection points and the like. Prospective purchasers must rely on their own enquiries. All graphics including tile layout and balustrades and the like are indicative only. Bulkheads for services are not depicted.

APARTMENT TYPE B8

		
2	2	2T



Apartment

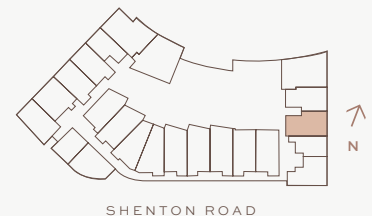
Number	19, 43, 67, 90, 112
Level	Two to Six
Aspect	East

Approx Area

Refer to Strata Plan for balcony configuration

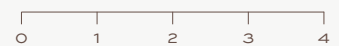
Architectural Internal	94m ²
Strata Internal	86m ²
Balcony	18m ²
Store	4-5m ²
Car Bay	27m ²
Total	135-136m ²

CLAREMONT OVAL



SHENTON ROAD

SCALE 1:100



CAR BAY INFORMATION

T = Tandem

DISCLAIMER: Please note that the layout plan was produced prior to construction. The information is believed to be correct but is not guaranteed. Changes may be made during construction and dimensions, areas, fittings, finishes and specification are subject to change without notice in accordance with the provisions of the contract for sale. The furniture and furnishings depicted are not included with any sale and purchasers must refer to their contract for sale for the list of inclusions. The position of the furniture and furnishings should not be taken to be indicative of final positions of power points, TV connection points and the like. Prospective purchasers must rely on their own enquiries. All graphics including tile layout and balustrades and the like are indicative only. Bulkheads for services are not depicted.

APARTMENT TYPE B9

		
2	2	2T



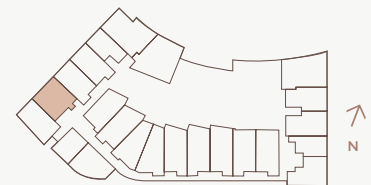
Apartment

Number	13(SS), 34, 58, 82, 105, 123
Level	One to Six
Aspect	West

Approx Area

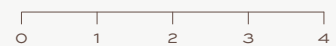
Refer to Strata Plan for balcony configuration	
Architectural Internal	97m ²
Strata Internal	89m ²
Balcony	20m ²
Store	4m ²
Car Bay	25-27m ²
Total	138-140m ²

CLAREMONT OVAL



SHENTON ROAD

SCALE 1:100



CAR BAY INFORMATION

SS = 2 x small bays
T = Tandem

DISCLAIMER: Please note that the layout plan was produced prior to construction. The information is believed to be correct but is not guaranteed. Changes may be made during construction and dimensions, areas, fittings, finishes and specification are subject to change without notice in accordance with the provisions of the contract for sale. The furniture and furnishings depicted are not included with any sale and purchasers must refer to their contract for sale for the list of inclusions. The position of the furniture and furnishings should not be taken to be indicative of final positions of power points, TV connection points and the like. Prospective purchasers must rely on their own enquiries. All graphics including tile layout and balustrades and the like are indicative only. Bulkheads for services are not depicted.

APARTMENT TYPE B10



Apartment

Number	1, 2
Level	Ground and One
Aspect	West

		
2	2	2TS

CAR BAY INFORMATION
2TS = Tandem (1 small bay)

Approx Area

Refer to Strata Plan for balcony configuration

Architectural Internal	114m ²
Strata Internal	103m ²
Balcony	31m ²
Store	4m ²
Car Bay	26m ²
Total	164m ²

CLAREMONT OVAL



SHENTON ROAD

SCALE 1:100



DISCLAIMER: Please note that the layout plan was produced prior to construction. The information is believed to be correct but is not guaranteed. Changes may be made during construction and dimensions, areas, fittings, finishes and specification are subject to change without notice in accordance with the provisions of the contract for sale. The furniture and furnishings depicted are not included with any sale and purchasers must refer to their contract for sale for the list of inclusions. The position of the furniture and furnishings should not be taken to be indicative of final positions of power points, TV connection points and the like. Prospective purchasers must rely on their own enquiries. All graphics including tile layout and balustrades and the like are indicative only. Bulkheads for services are not depicted.

APARTMENT TYPE B11

		
2	2	1-2T



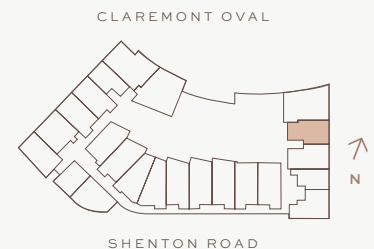
Apartment

Number	18(1), 42(2T), 66(2T)
Level	Two to Four
Aspect	East

Approx Area

Refer to Strata Plan for balcony configuration

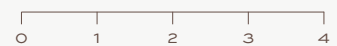
Architectural Internal	90m ²
Strata Internal	82m ²
Balcony	17m ²
Store	4-5m ²
Car Bay	14-27m ²
Total	117-131m ²



CAR BAY INFORMATION

T = Tandem

SCALE 1:100



DISCLAIMER: Please note that the layout plan was produced prior to construction. The information is believed to be correct but is not guaranteed. Changes may be made during construction and dimensions, areas, fittings, finishes and specification are subject to change without notice in accordance with the provisions of the contract for sale. The furniture and furnishings depicted are not included with any sale and purchasers must refer to their contract for sale for the list of inclusions. The position of the furniture and furnishings should not be taken to be indicative of final positions of power points, TV connection points and the like. Prospective purchasers must rely on their own enquiries. All graphics including tile layout and balustrades and the like are indicative only. Bulkheads for services are not depicted.

APARTMENT TYPE B12

		
2	2	2T



Apartment

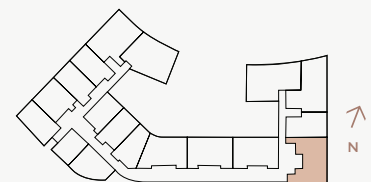
Number	113
Level	Six
Aspect	East

Approx Area

Refer to Strata Plan for balcony configuration

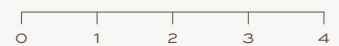
Architectural Internal	105m ²
Strata Internal	95m ²
Balcony	80m ²
Store	5m ²
Car Bay	27m ²
Total	207m ²

CLAREMONT OVAL



SHENTON ROAD

SCALE 1:100



CAR BAY INFORMATION

T = Tandem

DISCLAIMER: Please note that the layout plan was produced prior to construction. The information is believed to be correct but is not guaranteed. Changes may be made during construction and dimensions, areas, fittings, finishes and specification are subject to change without notice in accordance with the provisions of the contract for sale. The furniture and furnishings depicted are not included with any sale and purchasers must refer to their contract for sale for the list of inclusions. The position of the furniture and furnishings should not be taken to be indicative of final positions of power points, TV connection points and the like. Prospective purchasers must rely on their own enquiries. All graphics including tile layout and balustrades and the like are indicative only. Bulkheads for services are not depicted.